

Colich, N.L., Rosen, M.L., Williams, E., & McLaughlin, K.A. (2020). Biological aging in childhood and adolescence following experiences of threat and deprivation: A systematic review and meta-analysis. *Psychological Bulletin*. Online ahead of print.

This paper is a meta-analysis examining the associations of threat, deprivation, and socio-economic status (SES) in childhood and adolescence with the pace of biological aging across metrics of pubertal timing, cellular aging, and brain structure and function. Our findings suggest that experiences of threat are associated with earlier pubertal timing, advanced cellular aging, and accelerated cortical thinning in brain regions involved in social and emotional processing. In contrast, neither deprivation nor SES were associated with accelerated pubertal development or cellular aging. Deprivation was associated with accelerated cortical thinning, but in different brain regions than experiences of threat, including regions involved in sensory processing and cognitive control. This accelerated pattern of biological aging in children exposed to threat may be a mechanism underlying the associations of trauma with increased risk for chronic diseases and early mortality. More broadly, this paper provides support for my conceptual model distinguishing between the developmental consequences of experiences of threat and deprivation. Specifically, we demonstrate that threat and deprivation have distinct influences on the pace of biological aging, across metrics of development that extend beyond those proposed in the original theory.

Biological Aging in Childhood and Adolescence Following Experiences of Threat and Deprivation: A Systematic Review and Meta-Analysis

Natalie L. Colich and Maya L. Rosen
University of Washington

Eileen S. Williams
Stanford University

Katie A. McLaughlin
Harvard University

Life history theory argues that exposure to early life adversity (ELA) accelerates development, although existing evidence for this varies. We present a meta-analysis and systematic review testing the hypothesis that ELA involving threat (e.g., violence exposure) will be associated with accelerated biological aging across multiple metrics, whereas exposure to deprivation (e.g., neglect, institutional rearing) and low-socioeconomic status (SES) will not. We meta-analyze 54 studies ($n = 116,010$) examining associations of ELA with pubertal timing and cellular aging (telomere length and DNA methylation age), systematically review 25 studies ($n = 3,253$) examining ELA and neural markers of accelerated development (cortical thickness and amygdala-prefrontal cortex functional connectivity) and evaluate whether associations of ELA with biological aging vary according to the nature of adversity experienced. ELA overall was associated with accelerated pubertal timing ($d = -0.10$) and cellular aging ($d = -0.21$), but these associations varied by adversity type. Moderator analysis revealed that ELA characterized by threat was associated with accelerated pubertal development ($d = -0.26$) and accelerated cellular aging ($d = -0.43$), but deprivation and SES were unrelated to accelerated development. Systematic review revealed associations between ELA and accelerated cortical thinning, with threat-related ELA consistently associated with thinning in ventromedial prefrontal cortex, and deprivation and SES associated with thinning in frontoparietal, default, and visual networks. There was no consistent association of ELA with amygdala-PFC connectivity. These findings suggest specificity in the types of early environmental experiences associated with accelerated biological aging and highlight the importance of evaluating how accelerated aging contributes to health disparities and whether this process can be mitigated through early intervention.

Public Significance Statement

This meta-analysis and systematic review suggests that biological aging following early life adversity, including earlier pubertal timing, advanced cellular aging, and accelerated thinning of the cortex, may be specific to children and adolescents who experienced violent or traumatic experiences early in childhood. No such effect was found for children who experienced deprivation or poverty in the absence of violence or trauma. These findings highlight a potential role of accelerated biological aging in health disparities associated with early life trauma, and a potential target for early interventions.

Keywords: threat, deprivation, pubertal timing, cellular aging, cortical thickness

Supplemental materials: <http://dx.doi.org/10.1037/bul0000270.supp>

Natalie L. Colich and Maya L. Rosen, Department of Psychology, University of Washington; Eileen S. Williams, Department of Psychology, Stanford University; Katie A. McLaughlin, Department of Psychology, Harvard University.

Maya L. Rosen is now at the Department of Psychology, Harvard University. The authors wish to thank Kathryn L. Humphreys and Matthew Peverill for their assistance with the meta-analytic methods used in this article. We

also want to thank Nicole Capdarest-Arest for her assistance with the literature search. This research was supported by NIH Grants (F32-MH114317 to Natalie L. Colich; F32-HD089514, K99-HD099203 to Maya L. Rosen; R01-MH103291, R01-MH106482, R56-MH119194; R37-MH119194 to Katie A. McLaughlin).

Correspondence concerning this article should be addressed to Natalie L. Colich, Department of Psychology, University of Washington, Box 351525, Seattle, WA 98195. E-mail: ncolich@uw.edu

Exposure to early life adversity (ELA)—including exposure to child abuse, sexual assault, neglect, and chronic poverty—is associated with elevated risk for numerous mental and physical health problems, including depression, anxiety disorders, substance abuse, suicide, and cardiovascular disease (Felitti et al., 1998; Green et al., 2010; Heim & Binder, 2012; Kessler et al., 2010; McLaughlin et al., 2010; McLaughlin, Green, et al., 2012; Norman et al., 2012; Scott et al., 2011). The associations of ELA with mental and physical health problems are observable beginning in childhood and adolescence (Boynton-Jarrett, Ryan, Berkman, & Wright, 2008; Halpern et al., 2013; McLaughlin, Basu, et al., 2016; McLaughlin, Green, et al., 2012) and persist into adulthood (Dong et al., 2004; Felitti et al., 1998; Green et al., 2010; Kessler et al., 2010). Recent evidence from longitudinal and population-based studies indicates that exposure to ELA is also associated with elevated risk for premature mortality (Brown et al., 2009; Chen, Turiano, Mroczek, & Miller, 2016).

Accelerated Development/Biological Aging

One potential mechanism linking exposure to ELA with this wide range of physical and mental health problems is accelerated biological aging. Specifically, exposure to adversity early in life may alter the pace of development, resulting in faster aging. Most conceptual models on the link between ELA and accelerated development are based in life history theory (J. Belsky, Steinberg, & Draper, 1991; Ellis, Figueredo, Brumbach, & Schlomer, 2009; Ellis & Garber, 2000) and postulate that experiences in early life can program an individual's developmental trajectory in order to respond most effectively to the environmental demands they are likely to encounter later in life. The pattern and timing of life history events—such as age of sexual maturation, gestational period, number of offspring, birth spacing, length of parental investment, longevity, and others—is determined by the relative prioritization of time and energy invested in growth, reproduction, and survival (Del Giudice, Gangestad, & Kaplan, 2016; Hill & Kaplan, 1999). For instance, in a safe, predictable and enriched environment, a slow and protracted development may be optimal, as it allows for maximal parental investment prior to offspring independence. However, in a harsh or unpredictable environment, a faster pace of development in which individuals reach adult-like capabilities at an earlier age may be favored in order to maximize reproduction prior to potential mortality. Life history theories of human development argue that early environments characterized by harshness (e.g., trauma, violence exposure) may accelerate the onset of puberty in order to maximize the opportunity for reproduction prior to mortality (J. Belsky, 2012; Ellis et al., 2009; Rickard, Frankenhuis, & Nettle, 2014). However, in unpredictable environments, where there is large variation in harshness, it may be optimal to delay reproductive milestones, depending upon various features of the environment including population density and resource availability. For instance, according to some models, increased unpredictability in juvenile mortality tends to delay development, whereas increased unpredictability in adult mortality tends to accelerate development (J. Belsky, 2012; Ellis et al., 2009).

More recently, life history theories regarding the pace of development following ELA have been extended to focus on additional

measures of biological aging. First, predictive adaptive response models (Nettle, Frankenhuis, & Rickard, 2013; Rickard et al., 2014) focus on cellular and molecular development and how it relates to an individual's morbidity and mortality across the life span. These models propose that ELA negatively influences physical health, through altered cellular development as a result of reduced energy to build or repair cellular tissue. This advanced cellular aging forecast may reduce longevity and contribute to acceleration in reproductive maturity (Nettle et al., 2013; Rickard et al., 2014). Second, the stress acceleration hypothesis (Callaghan & Tottenham, 2016) suggests that ELA accelerates the development of neural networks underlying emotional processing, specifically, the amygdala-prefrontal cortex (PFC) circuit thought to underlie emotion regulation capabilities. This accelerated development in the context of unreliable or absent caregiving may occur in order to allow for independent emotion regulation at an earlier age (Callaghan & Tottenham, 2016). Each of these theories rest on the assumption that ELA impacts the pace of development across multiple domains and metrics of biological aging (pubertal timing, cellular aging, and neural development).

ELA and Biological Aging

Biological aging following ELA has been measured with a variety of different metrics. By far the most commonly used metric is the timing and pace of pubertal development, including age of menarche in females (Boynton-Jarrett & Harville, 2012; Dearthoff, Abrams, Ekwaru, & Rehkopf, 2014; Graber, Brooks-Gunn, & Warren, 1995) and pubertal stage controlling for chronological age (Colich et al., 2020; Mendle, Leve, Van Ryzin, Natsuaki, & Ge, 2011; Negriff, Blankson, & Trickett, 2015; Noll et al., 2017; Sumner, Colich, Uddin, Armstrong, & McLaughlin, 2019). A second line of work has examined measures of cellular aging, including leukocyte telomere length (Coimbra, Carvalho, Moretti, Mello, & Belangero, 2017; Drury et al., 2014; Price, Kao, Burgers, Carpenter, & Tyrka, 2013) and DNA methylation (DNAm) age (Gassen, Chrousos, Binder, & Zannas, 2017; Wolf et al., 2018). A separate literature has examined markers of neural maturation such as amygdala-PFC connectivity (Callaghan & Tottenham, 2016; Gee, Gabard-Durnam, et al., 2013) and cortical thickness (McLaughlin, Sheridan, Winter, et al., 2014).

Evidence for accelerated biological aging following ELA has been found across all of these metrics. For example, numerous studies have found that ELA is associated with earlier pubertal timing (Graber et al., 1995; Hartman, Li, Nettle, & Belsky, 2017; Mendle et al., 2011; Negriff, Blankson, et al., 2015). Similarly, a small but increasing number of studies have reported accelerated cellular aging following ELA, including shorter telomere length (Drury et al., 2014, 2012; Mitchell et al., 2014; Shalev et al., 2013), and advanced DNAm age relative to chronological age (Jovanovic et al., 2017; Sumner et al., 2019). Finally, much of the evidence for accelerated neural development following ELA comes from studies examining amygdala-PFC functional connectivity (Colich et al., 2017; Gee, Gabard-Durnam, et al., 2013; Keding & Heringa, 2016) and cortical thinning across development (McLaughlin, Sheridan, Winter, et al., 2014). However, other studies have found no associations between ELA and pubertal timing (Negriff, Saxbe, & Trickett, 2015; Negriff & Trickett, 2012) or cortical thinning (McLaughlin, Sheridan, et al., 2016;

Rosen, Sheridan, Sambrook, Meltzoff, & McLaughlin, 2018). Some studies have even found that ELA is associated with slower or delayed pubertal timing (Johnson et al., 2018; Negri, Blankson, et al., 2015; Sumner et al., 2019) and a more immature pattern of amygdala-PFC connectivity (Cisler, James, et al., 2013; Marusak, Martin, Etkin, & Thomason, 2015; Silvers et al., 2016). The strength and direction of the association between ELA and markers of biological aging varies widely across studies, and to date no systematic review or meta-analysis on this topic has been conducted.

We argue, and test through meta-analysis and systematic review, that the wide variability in the association of ELA with accelerated development might be explained—at least in part—by differences in how distinct types of ELA influence the pace of development. Existing studies have focused on a wide range of adversity experiences, ranging from physical abuse and violence exposure to physical and emotional neglect and institutional rearing, and provide some clues about the types of ELA that might be particularly likely to produce a pattern of accelerated development. For example, physical and sexual abuse have been consistently associated with accelerated pubertal development in females (Mendle, Ryan, & McKone, 2016; Natsuaki, Leve, & Mendle, 2011; Noll et al., 2017; Trickett, Noll, & Putnam, 2011; Trickett & Putnam, 1993). In contrast, studies of war and famine suggest that severe material deprivation can delay pubertal development (Pregib & Bralic, 2000; van Noord & Kaaks, 1991). Although less work has examined the effects of neglect and psychosocial deprivation on biological aging, existing studies typically find no association of neglect or early institutional rearing with pubertal timing (Johnson et al., 2018; Mendle et al., 2011; Reid et al., 2017; Ryan, Mendle, & Markowitz, 2015). In contrast, early institutionalization is associated with an accelerated pattern of cellular aging (Drury et al., 2012) and maturation of the amygdala-PFC circuit (Gee, Gabard-Durnam, et al., 2013), suggesting that accelerated biological aging might not occur in a uniform manner across various neurobiological systems. It is important to note that sample size varies widely across these lines of research. For instance, studies of pubertal timing tend to be significantly larger in sample size than studies of fMRI connectivity or cortical thickness, which could influence the variability of the results.

Discrepancies in existing findings may be due to the treatment of ELA as a monolithic construct with equifinality across all metrics of biological aging. To date, no attempt has been made to consider how associations of ELA with accelerated biological aging might vary according to the nature of the adversity experienced. Systematic investigation into variability in the association of ELA with biological aging across adversity types may help to reconcile inconsistent findings and advance theoretical models of how early experiences alter the pace of development at reproductive, cellular, and neural levels of analysis. This meta-analysis aims to do so by: (a) examining how *different dimensions* of ELA influence biological aging, distinguishing between experiences characterized by threat versus deprivation; and (b) evaluating whether the associations of these different types of adverse early experiences with biological aging are global or specific to particular domains of aging—including pubertal timing, cellular aging, and brain development.

Conceptual Model of Early-Life Adversity and Accelerated Development

Many prior studies examining the effects of ELA on accelerated biological aging have focused on a limited range of ELA experiences, typically focusing on relative extreme exposures like sexual abuse or institutional rearing. Other studies have utilized a cumulative-risk approach, which tallies the number of distinct forms of ELA experienced to create a risk score without regard to the type, chronicity, or severity of the experience and use this risk score as a predictor of outcomes, with the assumption that all forms of ELA have equal and additive effects on developmental outcomes (Evans, Li, & Whipple, 2013). Very few studies attempt to address the high co-occurrence of varying forms of ELA (Green et al., 2010; McLaughlin, Green, et al., 2012) or examine the differential influences of particular adversity types on biological aging, with some notable exceptions (Colich et al., 2020; Mendle et al., 2011; Mendle, Ryan, et al., 2016; Negri, Saxbe, et al., 2015; Sumner et al., 2019).

The dimensional model of adversity and psychopathology (DMAP) argues that the wide range of experiences currently classified as ELA can be organized into core underlying dimensions that have unique influences on cognitive, emotional, and neural development (McLaughlin, Sheridan, & Lambert, 2014; McLaughlin & Sheridan, 2016; Sheridan & McLaughlin, 2014). This model attempts to distill complex adverse experiences into core underlying dimensions that cut across multiple forms of ELA that share common features. Two such dimensions are *threat*, which encompasses experiences involving harm or threat of harm to the child, and *deprivation*, which involves an absence of expected inputs from the environment during development, such as cognitive and social stimulation (e.g., complex language directed at the child) as well as emotional nurturance (e.g., emotional neglect). In addition, the DMAP model argues that these dimensions of adversity have influences on emotional, cognitive, and neural development that are at least partially distinct. Increasing evidence has demonstrated the unique developmental consequences of threat and deprivation on developmental outcomes (Busso, McLaughlin, & Sheridan, 2017; Dennison et al., 2019; Everaerd et al., 2016; Lambert, King, Monahan, & McLaughlin, 2017; Rosen et al., 2018; Sheridan, Peverill, Finn, & McLaughlin, 2017). Determining whether all forms of ELA are associated with accelerated development across multiple metrics of biological aging or whether only particular dimensions of ELA are associated with this pattern is critical for identifying the mechanisms linking ELA to health outcomes and to better inform early interventions.

The threat dimension of ELA is conceptually similar, though not identical, to the life history theory dimension of environmental harshness, and involves experiences of trauma and violence exposure. We expect that experiences characterized by threat will be associated with accelerated biological aging, potentially in order to maximize the opportunity for reproduction prior to mortality (J. Belsky, Schlomer, & Ellis, 2012; Ellis et al., 2009). However, it is unclear how experiences of deprivation align with life history theory; whereas nutritional deprivation and food insecurity are thought to delay pubertal timing to ensure maximal bioenergetic resources should reproduction occur (Rogol, Clark, & Roemmich, 2000), specific predictions about physical and emotional neglect are lacking in life history models. Preliminary evidence suggests

that accelerated development following ELA may vary across different dimensions of adversity. For instance, we have found that experiences characterized by threat, but not deprivation, were associated with accelerated pubertal stage relative to chronological age and accelerated epigenetic aging in a community-based sample of children and adolescents (Sumner et al., 2019). In contrast, experiences characterized by deprivation were associated with *delayed* pubertal timing, after controlling for co-occurring threat experiences. We recently replicated this work in a nationally representative sample of adolescent females, using age of menarche as our metric of accelerated aging (Colich et al., 2020); here, we observed earlier age of menarche among adolescents exposed to trauma and violence, but no association between deprivation and age of menarche. Determining whether accelerated biological aging is associated with exposure to ELA generally or with particular dimensions of ELA may help to elucidate the specific psychological and biological mechanisms underlying these associations. Here we extend the DMAP theoretical model to encompass multiple biological aging outcomes by integrating it with life history theory, a well-established conceptual model of how the early environment shapes reproductive strategies. We make novel predictions based on the integration of these two conceptual models that we then test using meta-analyses and systematic review.

Metrics of Biological Aging

Accelerated biological aging has been conceptualized in many ways, across multiple domains of biological development. Historically, these domains have been examined in isolation, independent of other domains of biological aging. Few studies have empirically explored the effects of ELA on multiple domains of accelerated development (D. W. Belsky et al., 2017; Sumner et al., 2019) and recent work suggests that accelerated telomere erosion and accelerated pubertal development represent similar biological processes as a consequence of ELA (Shalev & Belsky, 2016).

Pubertal timing. The most consistently examined marker of accelerated development in relation to ELA is pubertal timing, typically operationalized as the age of onset of pubertal development, or the age of achieving a reproductive milestone such as menarche. Puberty begins as early as ages 8–14 in females and 9–15 in males with the activation of the hypothalamic-pituitary-gonadal (HPG) axis. This ultimately initiates the start of gonadarche, in which the gonads mature and produce gonadal hormones or sex steroids. This in turn, leads to breast development and eventually menarche in girls, and in increased testicle size and the onset of spermarche in males. Typical measures of pubertal development use secondary sex characteristics as a metric of pubertal stage (Carskadon & Acebo, 1993; Marshall & Tanner, 1970). For the purposes of this meta-analysis, we have included studies that explore how ELA is associated with three commonly used metrics of pubertal timing—pubertal stage relative to chronological age, age at the achievement of the onset of secondary sex characteristics, and age of menarche. Although menarche occurs relatively late in the pubertal process, participants are relatively reliable in their reporting of this milestone, particularly in adolescence (Dorn, Sontag-Padilla, Pabst, Tissot, & Susman, 2013).

Cellular aging. The internal predictive adaptive response model of accelerated aging following adversity postulates that the early environment influences an individual's somatic state, which

in turn influences reproductive timing and other life history events (Nettle et al., 2013; Rickard et al., 2014). One pathway linking ELA to somatic states is cellular aging. Some argue that if the body detects a shortened cellular life span, mechanisms may exist to accelerate the development of the reproductive system in order to maximize the chances of reproduction prior to mortality (Nettle et al., 2013; Rickard et al., 2014). Cellular aging in the context of ELA has been measured in two different ways—telomere length and metrics of epigenetic aging using DNAm patterns.

Telomeres are nucleopeptide complexes that sit at the end of chromosomes and protect the chromosome from degradation (Chan & Blackburn, 2004). Telomeres shorten due to both cell replication and exposure to oxidative stress and inflammation. In normal aging, telomeres shorten in all cell types, which allows for the use of telomere length as a biological marker of cellular age (Frenck, Blackburn, & Shannon, 1998). Chronic stress has been associated with shortened telomere length in adults (Epel et al., 2004), and several studies have demonstrated associations between ELA and telomere length in children (Coimbra et al., 2017; Essex et al., 2013; Price et al., 2013). Shortened telomere length has been implicated in the pathogenesis of both physical and mental health problems in adulthood (Gotlib et al., 2015; Hoen et al., 2013; Needham, Mezuk, et al., 2015; Tyrka et al., 2016), suggesting a potential mechanism linking ELA and maladaptive health outcomes in adolescence and adulthood.

A second recently established metric of cellular aging is an epigenetic clock that considers genome-wide DNAm patterns (both increased and decreased methylation of select CpG sites) to quantify biological age independent from chronological age (DNAm age; Hannum et al., 2013; Horvath, 2013). This metric correlates strongly with chronological age in both adolescents and adults (Horvath & Raj, 2018; Suarez et al., 2018) and shows strong positive associations with age of death (B. H. Chen et al., 2016; Marioni, Shah, McRae, Chen, et al., 2015), suggesting it is a valid metric of cellular aging. Deviations between DNAm age and chronological age have been used as a metric of accelerated development (Davis et al., 2017; Jovanovic et al., 2017; Sumner et al., 2019) and are associated with exposure to ELA (Jovanovic et al., 2017; Sumner et al., 2019). Advanced DNAm age has been associated with increased risk of cardiovascular disease, cancer, and obesity (Horvath et al., 2014; Marioni, Shah, McRae, Ritchie, et al., 2015; Perna et al., 2016), again potentially highlighting a mechanism linking ELA and physical health problems.

For the purpose of this meta-analysis, we have included studies that explore associations between ELA and cellular aging, as measured by both telomere length and DNAm age.

Brain development. Numerous studies have investigated the neural consequences of ELA. Here, we focus specifically on neural markers of maturation. As such, we focus on two metrics for which patterns of development have been well characterized: cortical thickness and functional connectivity between the amygdala and prefrontal cortex (PFC). We focus on cortical thickness as a metric of structural development because the pattern of development is well characterized, replicated across many studies, and shows a clear linear association with age, such that cortical thickness steadily decreases from middle childhood to early adulthood (Ducharme et al., 2016; LeWinn, Sheridan, Keyes, Hamilton, & McLaughlin, 2017; Vijayakumar et al., 2016; Wierenga, Langen, Oranje, & Durston, 2014). Second, we focus

on functional connectivity between the amygdala and PFC as a metric of maturation because it serves as a key component in the stress acceleration hypothesis, which posits that the amygdala-PFC circuit supporting emotional processing and regulation matures more rapidly among children exposed to ELA (Callaghan & Tottenham, 2016).

Cortical thickness declines steadily from childhood to early adulthood (Ducharme et al., 2016; LeWinn et al., 2017; Wierenga et al., 2014), as a result of developmentally appropriate pruning of synapses and increases in myelination of connections between neurons (Natu et al., 2019, 2018; Sowell et al., 2004). This linear pattern of development enables assessment of whether development is accelerated or delayed among children with ELA relative to their peers. Cortical structure can be measured in a variety of ways including surface area, thickness, and volume (for review, see Vijayakumar et al., 2016). However, cortical thickness is the only metric that has a linear developmental trajectory, declining steadily from early childhood through early adulthood (Ducharme et al., 2016; LeWinn et al., 2017; Walhovd, Fjell, Giedd, Dale, & Brown, 2017; Wierenga et al., 2014). In contrast, cortical surface area and volume exhibit nonlinear associations with age and the inflection points of these trajectories vary across samples and remain a source of debate (Ducharme et al., 2016; Giedd et al., 1999; Lenroot et al., 2007; LeWinn et al., 2017; Mills et al., 2016; Vijayakumar et al., 2016). These nonlinear patterns of development make assessing deviations from the expected pattern more difficult. Therefore, we focus only on studies that use cortical thickness—including both whole cortex and specific regions—as an outcome.

The stress acceleration hypothesis focuses on the impact of ELA on the developmental trajectory of neural circuits supporting emotion processing and regulation, particularly on connectivity between the amygdala and medial PFC (mPFC; Callaghan & Tottenham, 2016). Animal tracing studies demonstrate that feed-forward connections between amygdala and PFC exist early in life, but feedback connections emerge later in development (Barbas & García-Cabezas, 2016). It has been proposed that in humans, changes in functional connectivity between the mPFC and amygdala may reflect the maturation of these feedback connections (Gee, Humphreys, et al., 2013). In some studies, the pattern of functional connectivity between the amygdala and the mPFC shifts from positive to negative across development in the context of emotional processing tasks (Gee, Humphreys, et al., 2013; Silvers et al., 2016; Wu et al., 2016).

For the purpose of this systematic review, we have included studies that explore how ELA impacts both cortical thickness and amygdala-mPFC functional connectivity.

Consistency/discrepancies across metrics of biological aging.

Little research has explored how disparate metrics of biological aging relate to each other, especially in adolescence. As mentioned above, only one study has empirically explored the effects of ELA on multiple domains of accelerated development in adolescence (Sumner et al., 2019), and suggests that threat-related adversity has a similar effect on both pubertal timing and mDNA age (with these two metrics strongly correlated [$r = .52$]). Further evidence for homogeneity across metrics suggests that telomere length may be related to cortical thickness patterns in adults (Puhlmann et al., 2019). However, there is also evidence to suggest that metrics of biological aging are independent of each other. For instance, in a

large sample of middle-aged adults from the longitudinal Dunedin Study, associations among multiple metrics of biological aging were largely absent, including telomere length and mDNA age ($r = -0.03$; D. W. Belsky et al., 2018). One possibility is that metrics of biological aging diverge in their trajectories across the life-course, producing weaker associations among adults than children and adolescents, although—to our knowledge—this has yet to be examined empirically. Finally, there are many other metrics of biological aging that we do not examine, including “brain age,” markers of inflammation, and cardiovascular function (D. W. Belsky, Caspi, et al., 2015; Cole, Marioni, Harris, & Deary, 2019). Currently, it is unclear how these metrics of biological aging are related or independent of one another.

The Current Study

We aimed to test a novel hypothesis that experiences characterized by threat, but not deprivation, are associated with accelerated biological aging. This prediction is based in the DMAP framework (McLaughlin, Sheridan, & Lambert, 2014; Sheridan & McLaughlin, 2014), but also extends that conceptual framework to encompass a wide range of developmental processes that serve as metrics of biological aging and that were not considered in the original model. Applying this theoretical approach may help to reconcile discrepant findings in the literature by evaluating how different dimensions of ELA influence biological aging. In addition, we aimed to integrate disparate literatures by examining whether different dimension of adversity have general or specific effects on multiple domains of biological aging—including pubertal timing, cellular aging, and brain development. We expected that threat and deprivation would have different influences on biological aging, with threat associated with accelerated biological aging across all metrics and deprivation associated with delayed pubertal development. We did not have specific hypotheses about how deprivation would influence cellular aging or brain development, given conflicting findings in the literature of both acceleration and delayed maturation following early deprivation. We also separately examined the associations of socioeconomic status (SES) with biological aging, as SES is a commonly used global measure of early experience that is associated with increased risk of exposure to both threat and deprivation (e.g., Green et al., 2010; McLaughlin, Green, et al., 2012). We had no a priori hypotheses about SES, given that SES is linked to greater risk for both threat and deprivation experiences. A final guiding question was whether the associations of ELA characterized by threat and deprivation with biological aging would be consistent across all metrics, given inconsistencies in the literature as to how these metrics relate to one another (Belsky et al., 2018). Whereas pubertal development reflects a more global measure of aging, cellular aging is a metric of biological aging most relevant to physical health, and cortical thickness and development in the amygdala-PFC circuit may reflect learning or adaptation to a stressful early environment, but not aging in a global way. Finally, given the potential for genetic confounding in the link between ELA and accelerated development, we perform moderator analysis to evaluate whether effect sizes across studies that attempt to control for such confounding relative to those that do not.

Method

Information Sources and Search Strategy

This meta-analysis and systematic review was conducted in line with the PRISMA guidelines for meta-analyses (Moher, Liberati, Tetzlaff, & Altman, 2009; Figure 1). To identify studies with relevant data, literature searches were conducted using Internet databases (PubMed, SCOPUS, PsycINFO, Web of Science and Google Scholar) through May 2019. To ensure a thorough search, search terms encompassed various forms of ELA (e.g., violence, trauma, neglect, maltreatment, institutional rearing, deprivation, SES, poverty, early adversity, early life stress) as well as our dependent measures of interest (e.g., puberty, cell aging, methylation, menarche, telomere length, methylation, neural) and our targeted study population (e.g., infant, child, adolescent, pediatric; see online supplemental materials for all search terms). All included studies were published in English and from peer-reviewed journals. To further identify eligible studies, we reviewed references of identified articles for additional studies using forward and backward searching.

In order to be included in the meta-analysis, studies had to meet the following criteria. First, studies had to examine an association between ELA and one of our dependent measures (pubertal timing, cellular aging, or brain development) and report sufficient statistics to calculate an effect size. Second, exposure to ELA had to occur during childhood or adolescence (participants 18 and younger), rather than using retrospective reports of ELA in adults. This choice was made given the well documented recall biases associated with retrospective reporting of childhood experiences in adulthood (Baldwin, Reuben, Newbury, & Danese, 2019; Green et al., 2010; Hardt & Rutter, 2004; Widom, Raphael, & DuMont, 2004; Yarrow, Campbell, & Burton, 1970). Indeed, a recent meta-analysis comparing retrospective and prospective methods for measuring ELA exposure demonstrates very little overlap in the groups identified by each of these methods, suggesting that prospective and retrospective assessments identify fundamentally different groups of people (Baldwin et al., 2019). However, reports of age of menarche and metrics of cellular aging do not suffer this problem to the same degree (Cooper et al., 2006; Gilger, Geary, & Eisele, 1991). As such, we include studies where adversity was measured prospectively, but the metric of pubertal timing was retrospective or the measure of cellular aging was collected in adulthood. We did not include metrics of amygdala-PFC connectivity or cortical thickness measured in adulthood, given these metrics of development are specific to patterns that occur in childhood and adolescence, and it is not clear that more negative amygdala-PFC connectivity or thinner cortical thickness in adulthood reflects accelerated biological aging.

Inclusion criteria for ELA. We draw on a recent definition of ELA as experiences that were either chronic or severe in nature that require psychological or neurobiological adaptation by an average child and that represent a deviation from the expectable environment (McLaughlin, 2016). As detailed above, we used a wide range of search terms for ELA encompassing maltreatment experiences (e.g., physical, sexual, and emotional abuse; physical and emotional neglect), exposure to traumatic events (e.g., observing domestic violence, being the victim of interpersonal violence), institutional rearing, material deprivation (e.g., food insecurity),

and childhood SES. We did not consider biological father absence as a form of ELA given that: (a) it is not clearly a form of ELA based on prevailing definitions (McLaughlin, 2016); and (b) a meta-analysis on father absence and pubertal timing was recently conducted (Webster, Graber, Gesselman, Crosier, & Schember, 2014). We did not include other early experiences or more global stressful life events that did not clearly meet our definition of ELA (e.g., parental psychopathology, peer victimization).

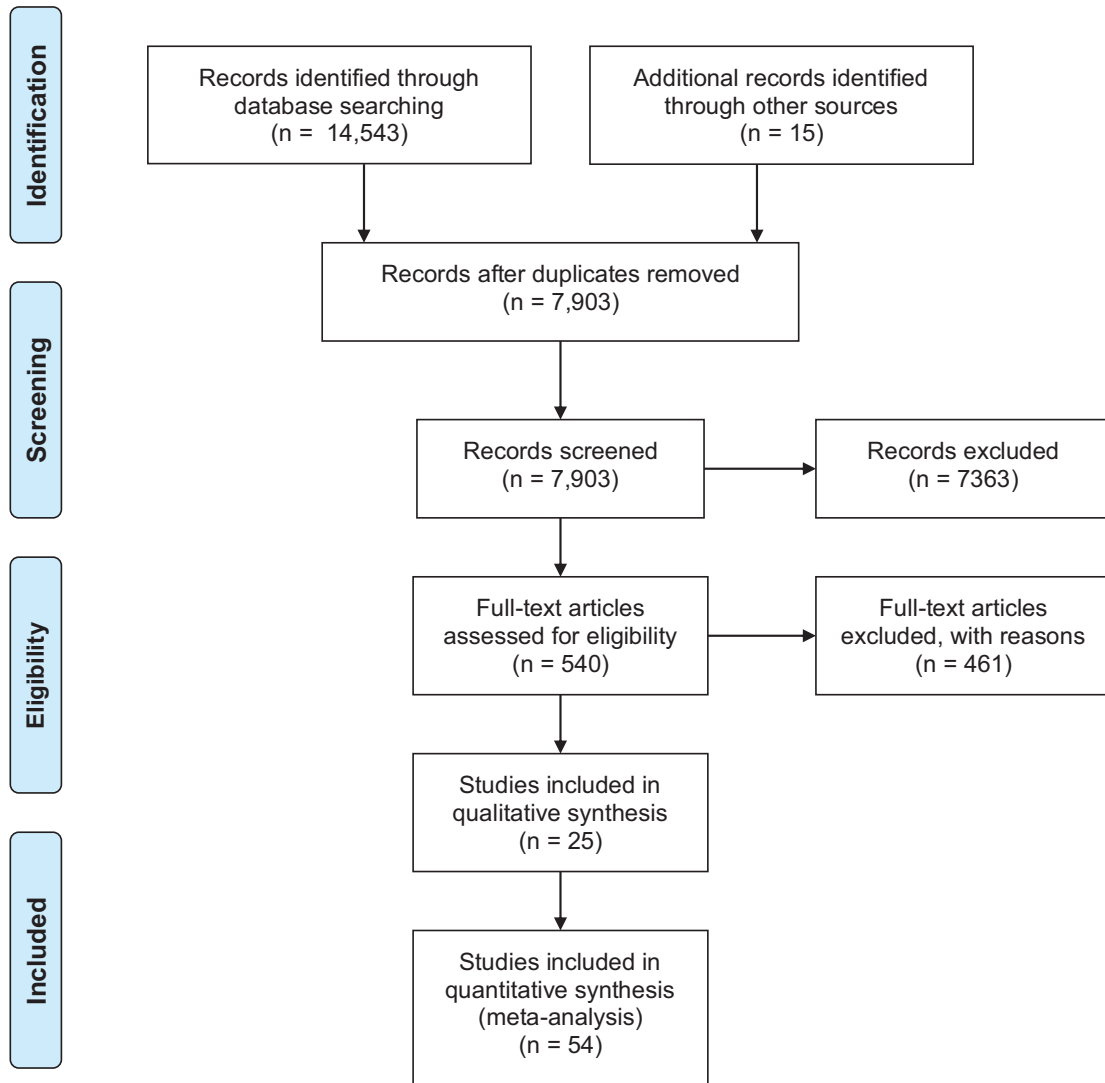
Inclusion criteria for studies of pubertal timing. To retain as many studies as possible, we included studies that used self-report, parent-report, and physician-rated Tanner/PDS stage (controlling for age) or age of menarche. Physician-rated Tanner stage and interview-based assessments of age of menarche in adolescence have been shown to be acceptably reliable (Coleman & Coleman, 2002; Dorn & Biro, 2011; Dorn et al., 2013; Petersen, Crockett, Richards, & Boxer, 1988; Shirtcliff, Dahl, & Pollak, 2009). Similarly, self-report of age of menarche, including retrospective reports, show relatively high reliability (Dorn et al., 2013; Lundblad & Jacobsen, 2017). We examined whether the specific measure of pubertal timing or including maternal age at menarche as a covariate significantly moderated the ELA-puberty associations.

Inclusion criteria for studies of cellular aging. Although there have been prior reviews and meta-analyses exploring the effects of ELA on telomere length (Coimbra et al., 2017; Price et al., 2013) or DNAm age (Gershon & High, 2015; Lewis & Olive, 2014; Silberman, Acosta, & Zorrilla Zubilete, 2016; Vinkers et al., 2015; Wolf et al., 2018), none has focused on differences across distinct adversity types or restricted the focus to studies measuring ELA in childhood or adolescence. Telomere length and DNAm age can be assessed through both blood and saliva samples, using multiple analysis techniques. Due to the limited number of studies on this topic, we have included all tissue types and analysis techniques in our analyses. Tissue type and analysis technique have been shown to influence reliability estimates of telomere length (Aviv et al., 2011; Elbers et al., 2014; Kim, Sandler, Carswell, Weinberg, & Taylor, 2011; Martin-Ruiz et al., 2015). However, mDNA age appears to be more consistent across tissue types (Horvath & Raj, 2018). Regardless, we examined whether metric of cellular aging (telomere length and DNAm age) or tissue type were moderators of the ELA-cellular aging association.

Inclusion criteria for studies of brain development. We included only studies that assessed cortical thickness—including both whole cortex and specific regions—as an outcome and not other measures of cortical structure (e.g., volume and surface area) where age-related patterns are nonlinear and thus more difficult to interpret with regard to acceleration of development. If ELA-exposed youth exhibit thinner cortex than nonexposed youths of the same age, this was interpreted as accelerated maturation; if ELA-exposed youths exhibit thicker cortex than nonexposed youths of the same age, this was interpreted as delayed development. Similarly, we focused only on studies exploring task-related amygdala-mPFC functional connectivity, where a developmental shift from positive to negative in task-related amygdala-mPFC connectivity has been documented (Callaghan & Tottenham, 2016; Gee, Gabard-Durnam, et al., 2013). We will evaluate studies of ELA with this normative developmental pattern in mind; if children who have experienced adversity demonstrate greater negative connectivity for their age than children who have not, this would



PRISMA 2009 Flow Diagram



From: Moher D, Liberati A, Tetzlaff J, Altman DG, The PRISMA Group (2009). Preferred Reporting Items for Systematic Reviews and Meta-Analyses: The PRISMA Statement. *PLoS Med* 6(7): e1000097. doi:10.1371/journal.pmed1000097

For more information, visit www.prisma-statement.org.

Figure 1. 2009 PRISMA flow diagram of literature search and screening process. See the online article for the color version of this figure.

reflect accelerated development and if children who have experienced adversity exhibit more positive or less negative connectivity than comparison children, this would reflect delayed development. Measures of cortical thickness have shown to be highly reliable, particularly when processed using the same analysis pipelines (Dickerson et al., 2008; Han et al., 2006; Iscan et al., 2015). In contrast to clear developmental changes observed in cortical thickness estimates, studies investigating developmental patterns of connectivity at rest have been more mixed, with some studies demonstrating an increase in connectivity with age (e.g., Gabard-Durnam et al., 2014) and others demonstrating a decrease (Jalbrzikowski et al., 2017). Because a consensus has not been reached on the normative developmental pattern of amygdala-mPFC connectivity during rest, we focus only on articles that explore the associations of ELA with amygdala-mPFC connectivity using task-related functional connectivity. Task-related activation has been shown to be highly reliable both within-subjects and across test sites (Gee et al., 2015), however the exact reliability of functional connectivity within these regions remains unknown.

We conducted a systematic review for metrics of brain development rather than a meta-analysis for the following reasons. First, whole-brain fMRI meta-analyses focus on the spatial nature of associations across the brain as opposed to the strength of effect sizes within a designated region. Given our focus on a specific measure of functional connectivity (amygdala-mPFC), spatial maps do not sufficiently address our research question regarding this metric of neural development. Second, the use of heterogeneous ROIs in studies of cortical thickness and amygdala-mPFC connectivity (e.g., different regions of mPFC), make it difficult to quantitatively compare results across studies. Third, meaningful differences in task design and task demands make it difficult to directly compare results of amygdala-mPFC connectivity using meta-analysis.

Because we were unable to meta-analyze the neuroimaging studies, we implemented the following criteria to assess the quality of each study included in the systematic review. This includes four criteria for PFC-amygdala connectivity studies and three criteria for cortical thickness studies. If the study took adequate steps to address the criterion in question, it received 1 point. If adequate steps were not taken, it received 0 points. The criteria for both sets of studies included: (a) adequate sample size ($N > 20$ per group or $N = 40$ overall if using continuous independent variables); (b) appropriate cluster correction for whole-brain analyses and correction for multiple comparisons for ROI-based analyses; and (c) appropriate methods for correcting for motion artifacts, including checks for between-groups differences in motion. A final criterion applied only to studies of PFC-amygdala connectivity examined whether an appropriate control condition was used in the fMRI contrast (i.e., task-related activation was compared with an active control condition, not fixation).

Measuring and Coding Adversity

In order to directly compare results from the present study with the majority of the existing literature, we first conducted an analysis in which we include studies defining ELA broadly, regardless of adversity type. We then examined whether associations of ELA with biological aging metrics exhibited significant heterogeneity, and evaluated whether adversity type (i.e., threat, deprivation,

SES) was a moderator of these associations (see Moderator Analysis for details). Consistent with previous work from our group (Colich et al., 2020; Dennison et al., 2019; McLaughlin, Sheridan, Lambert, 2014; Sheridan & McLaughlin, 2014), we conceptualized threat-related adversities to include experiences of physical abuse, domestic violence, sexual assault, witnessing or being the victim of violence in the community, and emotional abuse. Deprivation-related adversities included physical neglect, low cognitive stimulation, food insecurity, and early institutionalization/international adoption. We also examined the effects of SES, including family income and parental education. Although low SES is associated with reductions in cognitive stimulation among children (Bradley, Conyn, Burchinal, McAdoo, & Garcia Coll, 2001; Duncan & Magnuson, 2012; Gilkerson et al., 2017), SES is a proxy for deprivation rather than a direct measure. This is especially true when studies examine the effects of SES without controlling for co-occurring experiences of threat or violence. To ensure that we had not diluted our deprivation composite by including SES as an indicator, we chose to examine studies using SES as a metric of ELA separately.

The literature search yielded a total of 7,903 studies. Studies were first excluded based on their title or abstract ($k = 7363$) with exclusion decisions made by one of the authors (N.L.C.) and confirmed by another. Exclusion criteria included any publication that was not an analysis of primary data (i.e., a review, book chapter, etc.). We also excluded any studies conducted outside of the United States, Western Europe, or Australia, given well-documented effects of ethnicity, nutritional status, and SES on timing of development (Parent et al., 2003) and difficulties assessing SES consistently across different countries. A subset of studies were examined more thoroughly for eligibility ($k = 540$). After a careful review of the methods, studies were excluded if they didn't include a relevant independent or dependent variable (i.e., single gene methylation patterns rather than a measure of epigenetic aging or resting state amygdala-PFC connectivity rather than task-based connectivity; $k = 137$), if they were a review article or book chapter ($k = 140$), if they were conducted outside of the U.S./Europe/Australia ($k = 82$), if the study was conducted in infants ($k = 9$) or nonhuman animals ($k = 6$), if adversity was measured retrospectively in adults ($k = 39$), if we were unable to access the article ($n = 24$), if the data were from a conference abstract ($k = 8$), published in a foreign language only ($k = 3$), if the study was not sufficiently powered (i.e., less than or equal to five participants per group; $k = 2$), or the study was later retracted ($k = 1$). Given our focus on understanding deviations in developmental timing following ELA, studies were also excluded if the exposed and control group differed significantly in age ($k = 1$; Humphreys et al., 2016). Finally, studies were excluded if they did not include data that we were able to convert into an effect size after multiple attempts to contact the study authors for original data ($k = 9$). Overall, the current study included a total of 79 studies: 43 studies contributing to our meta-analysis exploring the effects of ELA on pubertal timing ($n = 114,450$), 11 studies contributing to our meta-analysis exploring the effects of ELA on cellular aging ($n = 1,560$), and 25 studies contributing to our systematic review exploring the effects of ELA on brain development ($n = 3,253$; with one study [Sumner et al., 2019] contributing to both pubertal timing and cellular aging analyses).

Management of Nonindependent Samples

In many cases, we extracted multiple effect sizes from the same sample. For example, some studies included multiple measures of pubertal timing (e.g., pubertal stage and age of menarche) or multiple measures of ELA (e.g., sexual abuse and physical abuse). Similarly, associations between ELA and developmental timing from a single study were sometimes examined across multiple publications using the same sample. To deal with this nonindependence, we conducted multilevel mixed effects analyses with restricted maximum likelihood estimation, including study nested within sample as a random effect, such that multiple effect size estimates are nested within a higher-level grouping variable (e.g., study or sample). In the case of longitudinal data, we always included data from Wave 1, as this wave tends to have the lowest attrition rate and in turn, the largest sample size (Borenstein, Hedges, Higgins, & Rothstein, 2009). If a separate article included data from a later wave, we included that data and did not report data from Wave 1 a second time (as these associations were included in the analysis from the Wave 1 article; e.g., (Mendle, Leve, Van Ryzin, & Natsuaki, 2014; Mendle et al., 2011).

Data Extraction

Three trained raters (N.L.C., M.L.R. & E.S.W.) coded individual studies. We screened each study and coded variables for study year, authors, participant composition/sample, mean age of participants, number of males and female participants, ethnicity, pubertal timing measure and informant, ELA measure and informant, cellular aging tissue type, and analysis technique, as well as whether analyses controlled for other types of adversity, parent psychopathology, child psychopathology, father absence, mother's age at menarche, and body mass index (BMI). All disagreements in coding were resolved via discussion among the three raters until consensus was achieved.

Data Analysis

To ensure consistency in the directionality of the effect sizes, in all cases, metrics of developmental timing were coded to indicate that numerically lower values (negative values) indicated accelerated development, to be consistent with age at menarche or age at pubertal attainment (the most commonly used metrics). Similarly, adversities were coded so that a numerically higher value indicates greater adversity. To be consistent with other variables, SES was coded to indicate that numerically higher SES values indicate lower SES.

For each study we calculated an effect size d and corresponding sampling variance (Cohen's d ; Cohen, 1988) for each relevant analysis (all effect size and sampling variance listed in Table S1). A positive d indicates that exposure to ELA is associated with delayed development (later age at a developmental milestone), where as a negative d indicates that greater adversity is associated with accelerated development (earlier age at a developmental milestone). We derived d s from multiple reported statistics including: unadjusted or adjusted correlations between two variables, odds ratios, mean differences and standard deviations, t statistics, F statistics and associated N s and p values, as well as unstandardized and standardized regression coefficients. All effect sizes were

computed in R (Version 3.4.1) using the `escalc` function in the "metafor" package (Viechtbauer, 2010) and converted to Cohen's d using established formulas (Borenstein et al., 2009). Authors were contacted when published articles met criteria for inclusion but did not include the necessary data to calculate an effect size amenable to our analyses, which occurred in 13 cases (of which four provided necessary data and were included in our analyses).

All meta-analyses were conducted using three-level mixed-effects models and the `rma.mv` function in the "metafor" package (Viechtbauer, 2010) in R (Version 3.4.1) including both study and sample as random effect (study nested within sample in order to deal with potentially nonindependent effect sizes coming from the same article or the same sample of participants; Assink & Wibbelink, 2016; Konstantopoulos, 2011). Publication bias was assessed using Begg's Rank correlation test (Begg & Mazumdar, 1994) and Egger's regression test of funnel plot asymmetry (Egger, Davey Smith, Schneider, & Minder, 1997). Additionally, we conducted p -curve analyses using the `pcurve` function in the "dmetar" package (Harrer, Cuijpers, Furukawa, & Ebert, 2019) to examine whether selective reporting of significant findings (clustering around $p = .05$ indicative of "p-hacking") contributed to our meta-analytic results (Simonsohn, Nelson, & Simmons, 2014). P -curve analysis is based on the assumption that a "true" effect is present only if significant p values resulting from studies included in the meta-analysis skew to the right (i.e., include more low vs. high statistically significant p values). All funnel plot and p -curve figures can be found in the online supplemental materials. These approaches may be less appropriate for mixed-effects meta-analysis which include nonindependent data points (Assink & Wibbelink, 2016). However, we provide the results of these tests to be consistent with prior meta-analyses. Heterogeneity was assessed using the Brestlow-day test (Cochran, 1954) and the method proposed by Higgins and colleagues (termed I^2 -squared; Higgins & Thompson, 2002).

We conducted separate sets of meta-analyses to explore the associations of ELA with two metrics of biological aging: pubertal timing and cellular aging. Within each set of analyses, we began by exploring the association of all adversity types (regardless of dimension) with our two domains of biological aging, then examined whether adversity type was a moderator of these associations. We then ran separate sensitivity analyses to examine associations separately by threat, deprivation, and SES to assess associations of each adversity type with biological aging outcomes. As described above, data on neural development was not reported in a manner across studies that permitted meta-analysis; instead, these results were systematically reviewed.

Moderator Analyses

Given our primary objective of understanding how adversity type influences associations between adversity and biological aging, we always first explored adversity dimension (threat, deprivation, SES, general adversity) as a moderator of the association between adversity and biological aging. In addition, in cases where effect sizes showed significant heterogeneity, we tested whether demographic or methodological factors moderated the associations between ELA and biological aging. These factors were based on prior literature, and included sample race/ethnicity (% White), sex composition of the sample (% male) and whether the study con-

trolled for BMI (0/1) or other forms of adversity (0/1). Additionally, for pubertal timing analyses, we examined metric of pubertal timing (age of menarche OR measure of secondary sex characteristics) and whether the association differed for studies that included maternal age at menarche relative to those that did not. For telomere length and DNAm age we also examined the use of blood versus saliva and cellular aging metric (telomere length vs. DNAm age) as potential moderators in our analyses. If there was no information given by the article regarding a specific moderator then they were marked as missing and not included in the moderator analysis. We tested each moderator separately using the moderator flag in the `rma.mv` function.

Results

Pubertal Timing

The 43 studies included in this meta-analysis produced 94 effect sizes and a total of 114,450 participants. Sample sizes ranged from 25 to 20,345 (median = 587). Of the 94 effect sizes, 21 focused on ELA characterized as threat, 21 focused on deprivation, 40 on SES, and 12 used a cumulative approach of summing across multiple forms of adversity. Table 1 presents descriptive demographic information for each study.

All adversities. We first examined the effect of all forms of adversity on pubertal timing across all 43 studies included in the meta-analysis. Greater exposure to ELA was associated with earlier pubertal timing ($d = -0.10$, 95% CI $[-0.18, -0.01]$) and significantly differed from zero ($z = -2.14$, $p = .03$; Figure 2). Significant heterogeneity was observed across studies, $Q(93) = 653.92$, $p < .0001$; $I^2 = 95.40$. The result of Begg's publication bias test (Kendall's $\tau = -0.10$, $p = .18$) and Egger's linear regression test ($z = -1.65$, $p = .10$) were not significant, suggesting no publication bias in our sample of studies (see sFigure1 for a funnel plot of all adversities and pubertal timing). The results of the p-curve analysis, in which 36 effect sizes were included and 30 had p values lower than .025, suggest that there is a "true" effect size driving these findings, and the results are not due to publication bias or p-hacking (sFigure 2).

Using adversity type as a moderator, we tested our hypothesis that threat would have a significant negative effect on pubertal timing (suggesting accelerated development), whereas deprivation would a significant positive effect on pubertal timing (suggesting delayed development). The random-effects meta-analysis including four adversity types as a moderator (threat, deprivation, SES, and any studies using only a composite measure of adversity) revealed that adversity type significantly moderated the association between ELA and pubertal timing, $F(3, 90) = 51.77$, $p < .0001$. Given significant differences across adversity type, we explored the effect of adversity on pubertal timing separately for each category of adversity.

Given concerns about genetic confounding of the association between maternal age at menarche and ELA exposure, we conducted a moderator analysis to test whether effect sizes derived from studies that controlled for maternal age at menarche differed significantly from those that did not. Of the 94 effect sizes included in this analysis, 19 of them came from articles that considered mother's at menarche. The random-effects meta-analysis including two categories as a moderator (study controlled for

mother's at menarche or did not control for mother's age at menarche) revealed that controlling for mother's age at menarche did not significantly moderate the association between ELA and pubertal timing, $F(1, 92) = 0.08$, $p = .78$.

Threat. In studies that specifically explored the association of threat exposure with pubertal timing (12 studies; 21 effect sizes, $N = 36,194$), greater exposure to threat was associated with earlier pubertal timing ($d = -0.26$, 95% CI $[-0.40, -0.13]$). The effect size was small and significantly differed from zero ($z = -3.81$, $p < .001$; Figure 3). Significant heterogeneity was observed across studies, $Q(20) = 229.73$, $p < .001$; $I^2 = 94.37$. The results of Begg's publication bias test (Kendall's $\tau = -0.27$, $p = .10$) and Egger's linear regression test ($z = -1.45$, $p = .15$) were not significant, suggesting no publication bias in our sample of studies (see sFigure3 for a funnel plot of all threat-related adversities and pubertal timing). The results of the p-curve analysis, in which 21 effect sizes were included and 12 had p values lower than .025, suggest that there is a "true" effect driving these findings, and the results are not due to publication bias or p-hacking (sFigure 4).

Given significant heterogeneity in our studies examining the association of threat-related adversities with pubertal timing, we conducted a series of moderator analyses. None of the five moderators (metric of pubertal timing, sex, race/ethnicity, BMI, controls for other ELA types) were significantly associated with variations in effect size.

Deprivation. In studies that specifically focused on the association of deprivation exposure with pubertal timing (12 studies; 21 effect sizes, $N = 34,193$), deprivation was not associated with pubertal timing ($d = 0.05$, 95% CI $[-0.07, 0.17]$) and did not significantly differ from zero ($z = 0.81$, $p = .42$; Figure 3). Significant heterogeneity was observed across studies, $Q(20) = 51.17$, $p < .001$; $I^2 = 89.34$. The results of Begg's publication bias test (Kendall's $\tau = 0.23$, $p = .14$) and Egger's linear regression test ($z = 1.86$, $p = .06$) were not significant, suggesting no publication bias in our sample of studies. (see sFigure3 for a funnel plot of all deprivation-related adversities and pubertal timing). The results of the p-curve analysis, in which 21 effect sizes were included and four had p values lower than .025, suggest that the results are not due to publication bias or p-hacking (sFigure4).

Given significant heterogeneity in our studies examining the association of deprivation-related adversities with pubertal timing, we conducted moderator analyses. For the association between deprivation and pubertal timing, sex was significantly associated with variation in effect sizes (estimate = 0.01, $SE = 0.00$, $z = 3.50$, $p < .001$), suggesting that the more males included in the sample, the more positive the association between deprivation exposure and pubertal timing (i.e., the more delayed the pattern of maturation). Given that multiple forms of deprivation were included in this category, including emotional deprivation (e.g., emotional neglect) and markers of deprivation across emotional, cognitive, and social domains (e.g., institutional rearing), we also conducted a sensitivity analysis exploring whether the effect size varied across different indicators of deprivation. The random-effects meta-analysis, including two categories as a moderator (neglect, institutionalization), revealed that controlling for deprivation type did not significantly moderate the association between deprivation-related ELA and pubertal timing, $F(1, 19) = 0.53$, $p = .47$.

Table 1
Characteristics of Individual Studies Included in the Pubertal Timing Meta-Analysis

| Study | Sample | Sample size (N) | Age range | Sex distribution | Early life adversity | Adversity details | Pubertal timing metric | Covariates |
|---|---|-----------------|-----------|------------------|----------------------|---|-----------------------------------|------------|
| Acacio-Claro, Koivusilta, Doku, & Rimpelä, 2019 | Adolescent Health and Lifestyle Surveys (AHLIS) | 37,876 | 14–43 | 54% Female | SES | Parental education | Age at menarche/first ejaculation | None |
| Amir, Jordan, & Bribiescas, 2016 | Nationally Representative Sample (U.S.); Add Health Survey Participants | 3,606 | 12–20 | Female only | Threat/SES | Subjective ratings of the availability of resources (family income) and environmental safety | Age at menarche | None |
| Arim, Shapka, Dahminen, & Willms, 2007 | Nationally Representative Sample (Canada); National Longitudinal Survey of Children and Youth | 7,977 | 10–17 | 50% Female | SES | Family SES (composite of household income, parental education and occupation levels, weighted by the factor loadings obtained through principal components factor analysis with varimax rotation) | PDS | Sex |
| Biell, Pollard, & Pearce, 2008 | Newcastle Thousand Families Study | 276 | 0–51 | Female only | SES | Father's occupation | Age at menarche | None |
| Boynton-Jarrett & Harville, 2012 | Nationally Representative Sample (UK); National Child Development Study | 4,524 | 11–16 | Female only | Threat/Deprivation | Exposure to violence/mental health issues; Lack of supportive caregiving | Menarche < 11 years | None |
| Braithwaite et al., 2009 | Nationally Representative Sample (U.S.); National Growth and Health Study | 2,077 | 9–19 | Female only | SES | SES (parent education level and household income) | Age at menarche < 12 years | None |
| Colich et al., 2020 | Nationally Representative Sample (U.S.); National Comorbidity Study - Adolescent Sample | 4,937 | 13–18 | Female only | Threat/deprivation | Threat exposure composite, deprivation exposure composite | Age at menarche | None |
| Culpin et al., 2014 | Nationally Representative Sample (UK); Avon Longitudinal Study of Parents and Children | 3,776 | 8–18 | Female only | SES | Presence of financial problems at age 6 and age 8 and mother's education status | Age at menarche | None |
| Deardorff, Abrams, Ekwari, & Rehkopf, 2014 | Nationally Representative Sample (U.S.); National Longitudinal Study of Youth | 4,851 | 9–16 | Female only | SES | SES before age 7 (Family income; Family wealth [income – total debt]; mother's education level; mother's employment status) | Age at Menarche | None |

(table continues)

Table 1 (continued)

| Study | Sample | Sample size (N) | Age range | Sex distribution | Early life adversity | Adversity details | Pubertal timing metric | Covariates |
|---|--|-----------------|-------------|------------------|----------------------|---|----------------------------------|---------------------|
| Deardorff et al., 2011 | Cohort Study of Young Girls' Nutrition, Environment, and Transitions | 444 | 6–10 | Female only | SES | Family income (<75,000) | Tanner stage | None |
| Deardorff et al., 2012 | Cohort Study of Young Girls' Nutrition, Environment, and Transitions | 213 | 6–12 | Female only | SES | Family income (<50,000) | Tanner stage | None |
| Ellis & Essex, 2007 | Wisconsin Study of Families and Work Community sample | 180 | 0–11 | Female only | SES | SES | PDS and Tanner | None |
| Furu, 1976 | Community sample from Sweden | 917 | 10–17 | Female only | SES | Father's or mother's occupation | Age at menarche | General Health; BMI |
| Graber, Brooks-Gunn, & Warren, 1995 | Premenarcheal subset from a larger longitudinal sample | 75 | 10–14 | Female only | General | Number of stressful life events | Age at menarche and Tanner stage | None |
| Gur et al., 2019 | Philadelphia Neurodevelopmental Cohort (PNC) | 9,498 | 8–21 | 52% Female | Threat | Traumatic events composite | Tanner stage | None |
| Hartman, Li, Nettle, & Belsky, 2017 | Nationally representative sample; NICHD Study of Early Child Care and Youth Development (SECCYD) | 659 | 1–15 | Female only | General | Composite of maternal sensitivity, maternal harshness, unpredictability, income harshness | Age at menarche | General Health; BMI |
| Hayes & Tan, 2016 | Cohort of adopted Chinese girls | 16,202 | 11–13 | Female only | Deprivation | International Adoption (from China to North America) | Age at menarche | None |
| James-Todd, Tehranifar, Rich-Edwards, Titevsky, & Terry, 2010 | Collaborative Perinatal Project | 237 | 0–47 | Female only | SES | Composite measure of father's education, income, occupation at age 7 | Age at menarche | None |
| James, Ellis, Schlomer, & Garber, 2012 | Longitudinal cohort | 238 | 11–18 | 54% Female | SES | Hollingshead | Age at menarche | None |
| Johnson et al., 2018 | Bucharest Early Intervention Project (BEIP) | 107 | 0–12 | 49% Female | Deprivation | Institutionalization | Age at menarche and Tanner stage | None |
| Kelly, Zilanawala, Sacker, Hiatt, & Viner, 2017 | Longitudinal cohort from UK Millennium Cohort Study | 5,839 | 0–11 | Female only | SES | SES (income quartiles) | Menarche status at age 11 | None |
| Lynne-Landsman, Graber, & Andrews, 2010 | Longitudinal cohort from Oregon Youth Substance Use Project; 538 females; 537 males | 1,075 | Grades 1–12 | 52% Female | SES | Household resources, conflict and stability | PDS | None |
| Mendle, Leve, Van Ryzin, & Natsuaki, 2014 | Longitudinal intervention cohort of girls in foster care | 100 | 10–12 | Female only | Threat/Deprivation | Sexual abuse, neglect, physical abuse, foster care placement | PDS | None |

(table continues)

This document is copyrighted by the American Psychological Association or one of its allied publishers. This article is intended solely for the personal use of the individual user and is not to be disseminated broadly.

Table 1 (continued)

| Study | Sample | Sample size (N) | Age range | Sex distribution | Early life adversity | Adversity details | Pubertal timing metric | Covariates |
|--|---|-----------------|-----------|------------------|------------------------|--|--|---|
| Mendle, Leve, Van Ryzin, Natsuaki, & Ge, 2011 | Longitudinal intervention cohort of girls in foster care | 100 | 10–12 | Female only | Threat/Deprivation | Sexual abuse, neglect, physical abuse, foster care placement | Age at menarche and PDS | All forms of adversity, child's age, child's race |
| Mendle, Moore, Briley, & Harden, 2016 | Nationally Representative Sample (U.S.); Add Health Survey Participants | 1,260 | 11–21 | Female only | SES | SES (parental education) | Age at menarche | None |
| Mendle, Ryan, et al., 2016 | Nationally Representative Sample (U.S.); Add Health Survey Participants | 6,273 | 11–34 | Female only | Threat/Deprivation/SES | Sexual abuse, physical neglect, undetermined maltreatment, SES (income to needs ratio) | Age at menarche and secondary sex characteristics (breast and curve development) | None |
| Milicic, 1968 | Community sample in Wroclaw, Poland | 5,859 | 9–17 | Female only | SES | SES (parental education, occupation and income) | Age at menarche | age, BMI, race |
| Monteith et al., 2011 | Nationally Representative Sample (UK); Avon Longitudinal Study of Parents and Children (ALSPAC) | 2,249 | 0–14 | Male only | SES | Mother's education | Tanner stage (age at pubic hair stage > 1) | None |
| Negriff & Trickett, 2012 | Longitudinal cohort in U.S. | 454 | 9–13 | 47% Female | General | Active case within Department of Child and Family Services | Tanner stage and PDS | None |
| Negriff, Blankson, & Trickett, 2015 | Longitudinal cohort in U.S. | 454 | 9–13 | 47% Female | Threat | Sexual Abuse, Other Maltreatment | PDS | ethnicity, obesity, biological father absence |
| Negriff, Saxbe, & Trickett, 2015 | Longitudinal cohort in U.S. | 454 | 9–13 | 47% Female | General | Active case within Department of Child and Family Services | PDS | None |
| Noll et al., 2017 | Longitudinal cohort in U.S. | 173 | 11–20 | Female only | Threat | Sexual Abuse | Tanner stage | None |
| Reagan, Salsberry, Fang, Gardner, & Pajer, 2012 | Nationally representative sample (U.S.); National Longitudinal Study of Youth | 2,337 | 12–17 | Female only | SES | % time in poverty between ages 0–5 | Age at menarche | All forms of adversity, child's age, child's race |
| Reid et al., 2017 | Cohort of internationally adopted youth | 165 | 7–14 | Female only | Deprivation | Institutionalization | % menstruating | BMI, people in household, father's occupation |
| Ryan, Mendle, & Markowitz, 2015 | Nationally representative sample (U.S.); Add Health Survey Participants | 6,273 | 11–34 | Female only | Threat/Deprivation/SES | Sexual Abuse, physical neglect, SES (income to needs ratio) | Age at menarche | None |
| Salces, Rebato, Susanne, San Martin, & Rosique, 2001 | Community sample from Basque Country, Spain | 196 | 9–17 | Female only | SES | SES (father's occupation) | Age at menarche | None |

(table continues)

Table 1 (continued)

| Study | Sample | Sample size (N) | Age range | Sex distribution | Early life adversity | Adversity details | Pubertal timing metric | Covariates |
|--|---|-----------------|-----------|------------------|------------------------|--|------------------------|--|
| Sonuga-Barke, Schlotz, & Rutter, 2010 | Cohort of adopted Romanian youth | 197 | 6–15 | ~ 50% Female | Deprivation | Institutionalization | Tanner stage | Parental early puberty history, perinatal factors, childhood and current adiposity, physical activity, sleep duration, presence of stepfather, stressful life events |
| Summer, Colich, Uddin, Armstrong, & McLaughlin, 2019 | Community sample of maltreated children and adolescents from Seattle, WA | 247 | 8–16 | 48% Female | Threat/deprivation/SES | Threat exposure composite, deprivation exposure composite, SES (below or above poverty line) | Tanner stage | Sex, race/ethnicity, family poverty status, other adversity exposure composite |
| Sun, Mensah, Azzopardi, Patton, & Wake, 2017 | Nationally representative sample (Australia); The Longitudinal Study of Australian Children | 3,764 | 0–11 | 48% Female | SES | SES (family income, education and occupation) | PDS | None |
| Sung et al., 2016 | Nationally representative sample (U.S.); NICHD Study of Early Child Care and Youth Development (SECCYD) | 492 | 0–15 | Female only | SES | SES (income to needs ratio) in the first 5 years of life | Age at menarche | BMI, race, age, other adversity |
| Teilmann et al., 2009 | Cohort of internationally adopted individuals in Denmark | 1,376 | 4–13 | Female only | Deprivation | International Adoption (from Asia, South America, Eastern Europe and Africa to Denmark) | Tanner stage | None |
| Turner, Runtz, & Galambos, 1999 | Canadian cohort of girls recruited from outpatient clinical agencies and public schools | 44 | 12–19 | Female only | Threat | Sexual abuse | Age at menarche | None |
| Windham, Zhang, Longnecker, & Klebanoff, 2008 | New York site of Collaborative Perinatal Project | 1440 | 7–22 | Female only | SES | Income and crowding/number of persons per room in the household at age 7/8 | Age at menarche | None |

Note. BMI = body mass index; PDS = Pubertal Development Scale; SES = socioeconomic status.

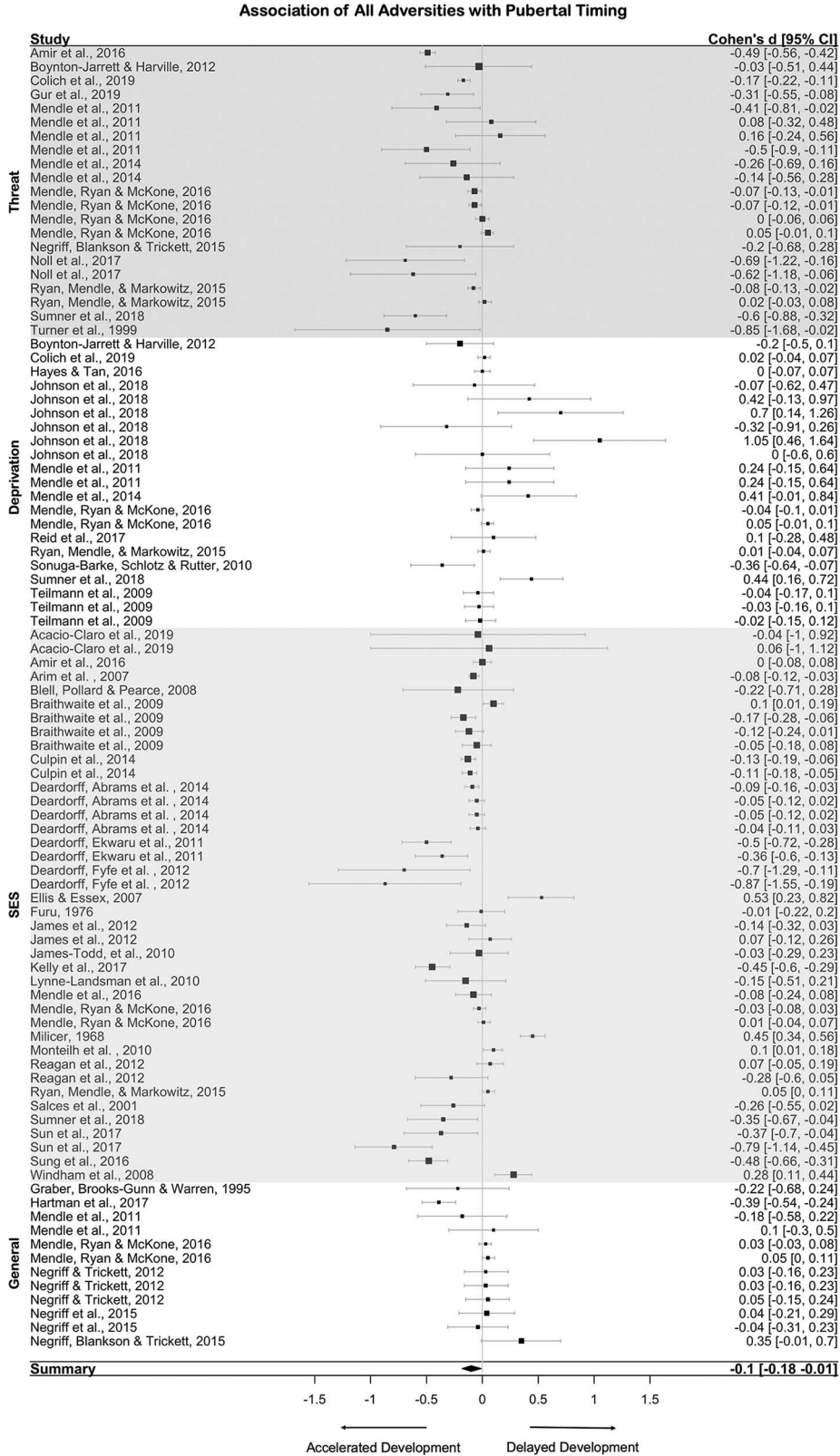


Figure 2. Association of all adversities and pubertal timing. The point sizes are an inverse function of the precision of the estimates.

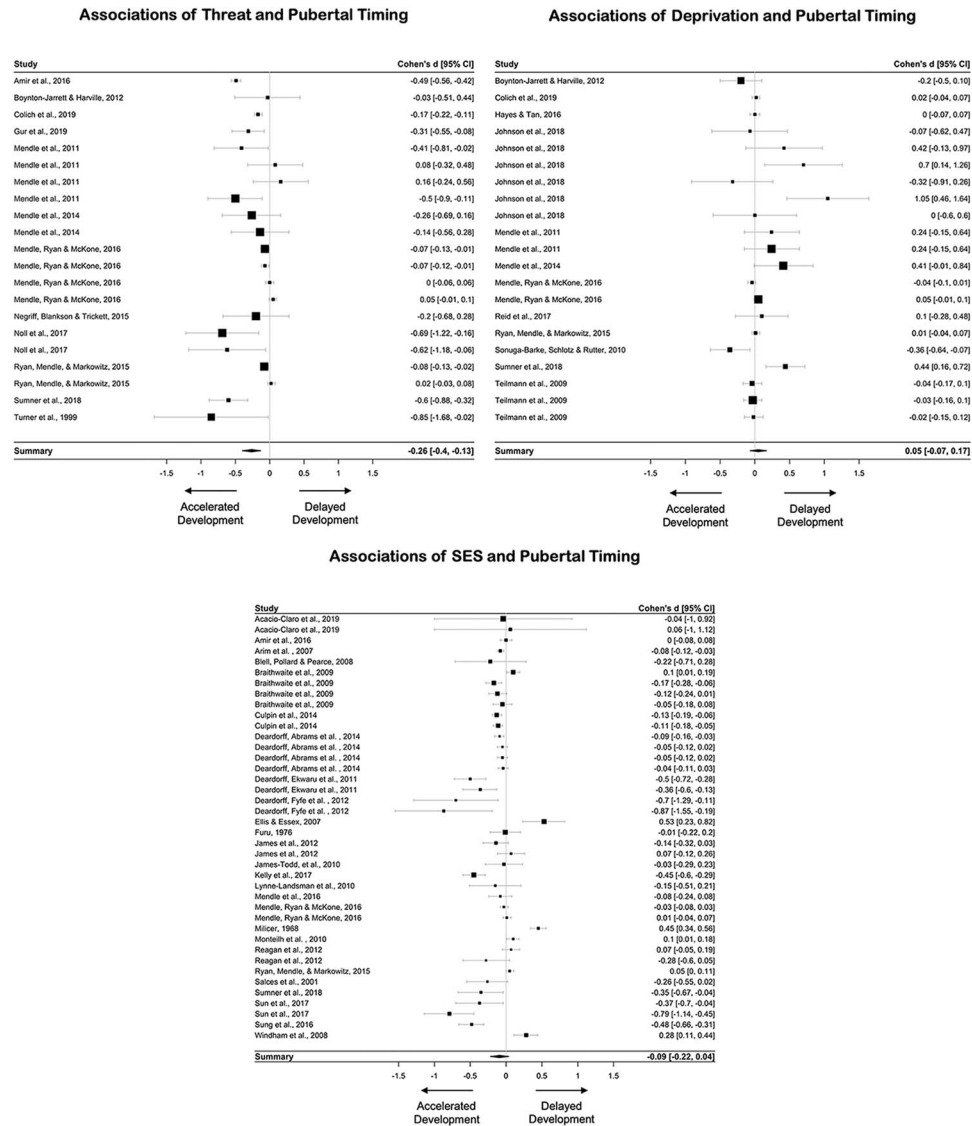


Figure 3. Association of all adversities and cellular aging. The point sizes are an inverse function of the precision of the estimates. SES = socioeconomic status.

SES. For studies that explored the association of SES with pubertal timing (26 studies; 40 effect sizes, $N = 87,654$), the random-effects meta-analysis found that SES was associated with earlier pubertal timing ($d = -0.09$, 95% CI [-0.22, 0.04]), but the effect size was not significantly different than zero ($z = -1.40$, $p = .16$; Figure 3). Significant heterogeneity was observed across studies, $Q(39) = 285.68$, $p < .001$; $I^2 = 96.38$. The result of Begg's publication bias test (Kendall's $\tau = -0.15$, $p = .18$) and Egger's linear regression test ($z = -1.44$, $p = .15$) were not significant, suggesting no publication bias in our sample of studies (see sFigure3 for a funnel plot of all SES-related adversities and pubertal timing). The results of the p-curve analysis, in which 40 effect sizes were included and 19 had p values lower than .025, suggest that the results are not due to publication bias or p-hacking (sFigure4).

Given significant heterogeneity in our studies examining the association of SES with pubertal timing, we conducted a series of moderator analyses. For the association between SES and pubertal timing, race/ethnicity was significantly associated with variation in effect sizes (estimate = -0.002 , $SE = 0.001$, $z = -3.39$, $p < .001$), suggesting that the higher percentage of White individuals in the sample, the more negative the association between SES-related adversity and pubertal timing (i.e., the more accelerated the pattern of maturation).

Cellular Aging

A total of 11 studies (nine examining telomere length, two examining DNA methylation age) produced 17 effect sizes across a total of 1,560 participants. Sample sizes for included studies

ranged from 38 to 293 (median = 100). Of the 17 effect sizes, four focused on the effect of threat on cellular aging, two focused on deprivation, seven on SES, and four used a cumulative approach of summing across multiple forms of adversity. Table 2 presents descriptive demographic information for each study.

All adversities. We first examined the effect of all forms of adversity on cellular aging across all 11 studies included in the meta-analysis. The random-effects meta-analysis found that greater exposure to ELA was associated with accelerated cellular aging ($d = -0.21$, 95% CI [-0.39, -0.04]) and significantly differed from zero ($z = -2.43$, $p = .01$; Figure 4). There was significant heterogeneity observed across studies, $Q(16) = 44.27$, $p < .001$; $I^2 = 61.47$. The result of Begg's publication bias test (Kendall's $\tau = -0.34$, $p = .06$) was not significant, but Egger's linear regression test ($z = -2.06$, $p < .05$) was significant, suggesting a slight asymmetry of the funnel plot and potential publication bias in our sample of studies (sFigure5). The results of the p-curve analysis, in which seven effect sizes were included and four had p values lower than .025, were inconclusive. The results of this analysis do not indicate a "true effect," free of publication bias, but also do not verify that evidential value or a "true effect" is absent or inadequate (sFigure6). These results are most likely due to the small number of effect sizes included in the p-curve analysis, and the high heterogeneity across all effect sizes. These results should be viewed as preliminary, until more studies on this subject are published.

Using adversity type as a moderator, we tested our hypothesis that threat would have a significant negative effect on cellular aging (suggesting accelerated development) and evaluated whether these effects were similar for other adversity types. Adversity type moderated the association between ELA and cellular aging, $F(3, 13) = 7.69$, $p = .05$. As such, we explored the associations of ELA with cellular aging separately for each adversity type.

Given that multiple forms of cellular aging were included in this analysis, including telomere length and DNAm age, we also conducted a sensitivity analysis exploring the impact of adversity on telomere length alone, and a using cellular aging metric (telomere length and mDNA age) as a moderator of the association between ELA and cellular aging. In telomere studies only, greater exposure to ELA was associated with shorter telomere length ($d = -0.21$, 95% CI [-0.41, -0.01]) and significantly differed from zero ($z = -2.03$, $p = .04$). Significant heterogeneity was observed across studies, $Q(12) = 33.16$, $p < .001$; $I^2 = 61.99$. The result of Begg's publication bias test (Kendall's $\tau = -0.35$, $p = .09$) was not significant; however, Egger's linear regression test was marginally significant ($z = 01.98$, $p = .05$), suggesting potential publication bias in our sample of studies. The results of the p-curve analysis, in which five effect sizes were included and two had p values lower than .025, were inconclusive. The results of this analysis do not indicate a "true effect," free of publication bias, but also do not verify that evidential value or a "true effect" is absent or inadequate. These results are most likely due to the small number of effect sizes included in the p-curve analysis, and the high heterogeneity across all effect sizes. Cell type (buccal, saliva, blood) did not significantly moderate this association, $F(2, 10) = 4.20$, $p = .12$. Similarly, cellular aging metric (telomere length and mDNA age) did not moderate the association between ELA and cellular aging, $F(1, 15) = 0.04$, $p = .85$.

Threat. In studies that explored the association of threat exposure with cellular aging (four studies; four effect sizes, $N = 664$), greater exposure to threat was associated with accelerated cellular aging ($d = -0.43$, 95% CI [-0.61, -0.25]). The effect size was moderate in magnitude and differed from zero ($z = -4.65$, $p < .0001$; Figure 5). Significant heterogeneity was not observed across studies, $Q(3) = 0.39$, $p = .94$; $I^2 = 0.0000001$. The results of Begg's publication bias test (Kendall's $\tau = -0.33$, $p = .75$) and Egger's linear regression test ($z = -0.43$, $p = .67$) were not significant, suggesting no publication bias in our sample of studies (see sFigure 7 for a funnel plot of threat-related adversities and cellular aging). The results of the p-curve analysis, in which three effect sizes were included and three had p values lower than .025, were inconclusive (sFigure 8). The results of this analysis do not indicate a "true effect," free of publication bias, but also do not verify that evidential value or a "true effect" is absent or inadequate. As with the other analyses examining cellular aging, this is most likely due to the small number of effect sizes included in the p-curve analysis, and the high heterogeneity across the effect sizes.

Deprivation. In studies that explored the association of deprivation exposure with cellular aging (two studies; two effect sizes, $N = 347$), the random-effects meta-analysis found that deprivation was not associated with cellular aging ($d = -0.01$, 95% CI [-0.24, 0.23]), with an effect size that did not significantly differ from zero ($z = -0.07$, $p = .94$; Figure 5). Significant heterogeneity was not observed across studies, $Q(1) = 0.31$, $p = .58$; $I^2 = 0.0000002$. The results of Begg's publication bias test (Kendall's $\tau = -1.000$, $p = 1.000$) and Egger's linear regression test ($z = -0.56$, $p = .56$) were not significant, suggesting no publication bias in our sample of studies. However, given this analysis only contained two effect sizes, this is not a reliable estimate of publication bias. P-curve analyses were not conducted due to the small number of significant p values $< .05$ ($n \leq 2$), which suggests no evidence of p-hacking or publication bias given the absence of significant published effects. We did not explore moderators given the lack of heterogeneity in effect sizes.

SES. In studies of SES and cellular aging (six studies; seven effect sizes, $N = 1,005$), SES was not associated with cellular aging ($d = -0.03$, 95% CI [-0.20, 0.14]), with an effect size that did not significantly differ from zero ($z = -0.35$, $p = .73$; Figure 5). Significant heterogeneity was not observed across studies, $Q(6) = 8.94$, $p = .18$; $I^2 = 25.48$. The result of Begg's publication bias test was not significant (Kendall's $\tau = -0.52$, $p = .14$), however Egger's linear regression test ($z = -2.45$, $p = .01$) was significant, suggesting a slight asymmetry of the funnel plot and potential publication bias in our sample of studies. P-curve analyses were not conducted due to the small number of significant p values $< .05$ ($n \leq 2$). We did not explore moderators given the lack of heterogeneity in effect sizes.

Brain Development

We systematically reviewed the associations between ELA and two metrics of brain development: cortical thickness and task-based amygdala-PFC functional connectivity. Across the two metrics there were 25 studies and a total of 3,253 unique participants (17 cortical thickness articles, $N = 2,825$; 7 amygdala-PFC connectivity articles, $N = 428$). As described above, we created

Table 2
Characteristics of Individual Studies Included in the Cellular Aging Meta-Analysis

| Study | Sample | Sample size (N) | Age range | Sex distribution | Early life adversity | Adversity details | Cellular aging metric | Covariates |
|---|---|-----------------|---------------|------------------|----------------------|--|--------------------------------|--|
| Asok, Bernard, Roth, & Dozier, 2013 | Longitudinal cohort examining efficacy of attachment-based intervention for infants in Child Welfare System | 38 | 4-7 | 58% Female | General | Identified by Child Welfare System as being at-risk for maltreatment (conditions noted most often include child neglect, domestic violence, parental substance use, inadequate housing) | Telomere length (buccal swabs) | Household income, sex, minority status |
| Brody, Yu, & Shalev, 2017 | Cohort from a family-based prevention study | 293 | 17-22 | 63% Female | SES | Composite metric considering family poverty, caregiver unemployment, government assistance, single parenthood, caregiver education level, and self-reported inadequacy of family income | Telomere length (blood) | None |
| Drury, Mabile, Brett, et al., 2014 | Community sample from New Orleans, LA | 80 | 5-15 | 49% Female | Threat/general | Family instability (witnessing family violence, suicide, incarceration) | Telomere length (buccal swabs) | None |
| Drury, Theall, Gleason, et al., 2012 | Bucharest Early Intervention Project (BEIP) | 100 | 6 months - 10 | 41% Female | Deprivation | Early institutionalization (% of time spend in institution at 54 months) | Telomere length (buccal swabs) | Group, sex, ethnicity, age at telomere collection and low birth weight |
| Jovanovic et al., 2017 | Longitudinal cohort of trauma exposed children and adolescents | 101 | 6-13 | 54% Female | Threat | Violence Exposure | Horvath DNAm age (saliva) | None |
| Mitchell, Hobcraft, McLanahan, et al., 2014 | 2 cohorts including Fragile Families and Child Wellbeing Study and an independent cohort | 40 | 9 | Male only | General/SES | Harsh environment determined by equally weighted combination of (a) family economic conditions, (b) parenting practices, and (cc) family structure/stability – then incorporating maternal depression; income to needs ratio | Telomere length (saliva) | None |

(table continues)

Table 2 (continued)

| Study | Sample | Sample size (N) | Age range | Sex distribution | Early life adversity | Adversity details | Cellular aging metric | Covariates |
|--|--|-----------------|-----------|------------------|------------------------|--|--------------------------------|--|
| Needham, Fernandez, Lin, Epel, & Blackburn, 2012 | Admixture Mapping for Ethnic and Racial Insulin Complex Outcomes (AMERICO) cohort | 70 | 7-13 | 53% Female | SES | SES (family income and parental education) | Telomere length (blood) | None |
| Ridout et al., 2019 | Cohort of children and adolescents, half of whom had child welfare documentation of moderate-severe maltreatment | 256 | 3-5 | 52% Female | General/SES | Number of types of maltreatment experienced, number of lifetime contextual stressors, and number of other traumatic life events; composite measure of socioeconomic adversity including parental education, parental unemployment, and single parenthood | Telomere length (saliva) | Age, ethnicity |
| Shalev et al., 2013 | Environmental-Risk Longitudinal Twin Study | 236 | 5-12 | 49% Female | Threat | Domestic violence, bullying victimization, physical maltreatment | Telomere length (buccal swabs) | None |
| Summer, Colich, Uddin, Armstrong, & McLaughlin, 2019 | Community sample of maltreated children and adolescents from Seattle, WA | 247 | 8-16 | 48% Female | Threat/deprivation/SES | Threat exposure composite, deprivation exposure composite, SES (below or above poverty line) | Horvath DNAm age (saliva) | Sex, race/ethnicity, family poverty status, other adversity exposure composite |
| Theall, Brett, Shircliff, Dunn, & Drury, 2013 | Community sample from New Orleans, LA | 99 | 4-14 | 53% Female | SES | Household socioeconomic position | Telomere length (saliva) | None |

Note. SES = socioeconomic status.

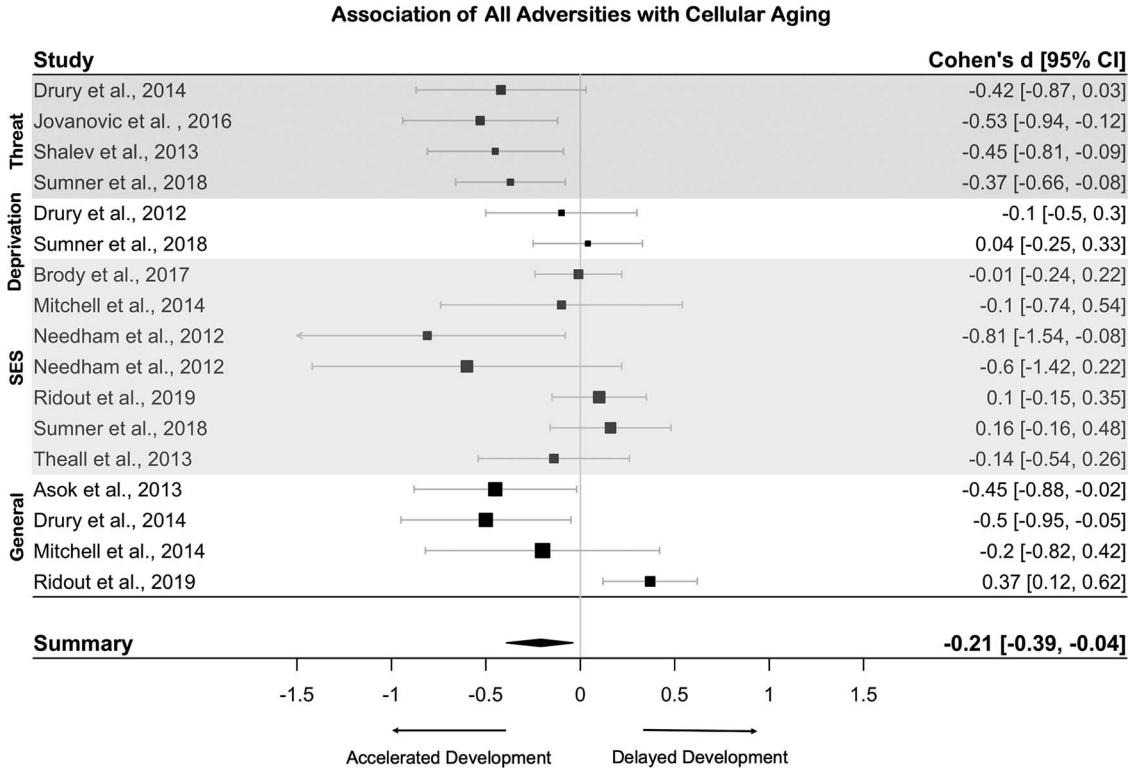


Figure 4. Association of adversity and pubertal timing by adversity type. The point sizes are an inverse function of the precision of the estimates.

quality ratings for these studies with a 3-point scale for cortical thickness articles and a 4-point scale for amygdala-PFC connectivity articles. All ratings can be found in Table 3 and Table 4.

Cortical thickness.

Threat. We found six articles that investigated the association between experiences of threat and cortical thickness in childhood

and adolescence ($N = 232$; Busso, McLaughlin, Brueck, et al., 2017; Edmiston et al., 2011; Gold et al., 2016; Kelly et al., 2013; Lim et al., 2018; McLaughlin, Sheridan, et al., 2016). Of these six studies, five found that children exposed to threat had accelerated thinning of the cortex. Four of these studies found decreased cortical thickness among children exposed to threat in the ventro-

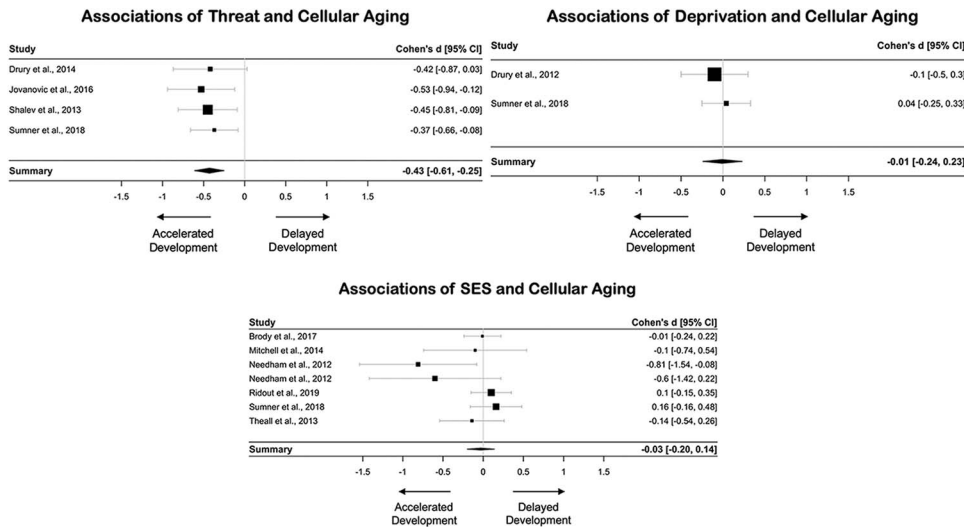


Figure 5. Association of adversity and cellular aging by adversity type. The point sizes are an inverse function of the precision of the estimates. SES = socioeconomic status.

Table 3
Characteristics of Individual Studies Included in the Cortical Thickness Systematic Review

| Authors | Sample | Sample size (N) | Age range ^a | Sex distribution | Early-life adversity | Adversity details | ROI or whole brain? | Brain regions with significant associations with adversity | Covariates | Group matching characteristics | Study quality rating (out of 3) |
|---|--|-----------------|------------------------|------------------|----------------------|---|---|---|--|--------------------------------|---------------------------------|
| Avants, Hackman, Bélandcourt, Lawson, Hurt, & Farah, 2015 | Community sample | 52 | 19.16 (1.32) | 52% Female | Deprivation | Environmental stimulation measured by the HOME at ages 4 and 8 | Whole brain | Thicker cortex among children with lower levels of cognitive stimulation at age 4 (but not 8) in L lateral inferior temporal—posterior, L lateral inferior temporal—anterior, bilateral fusiform, R lateral inferior temporal | Age at scan, maternal IQ, gender, foster care and prenatal cocaine | N/A | 2 |
| Busso, McLaughlin, Brueck, Peverill, Gold, & Sheridan, 2017 | Community based sample of children in Boston, MA exposed to high rates of maltreatment | 51 | 13–20 | 60% Female | Threat | Childhood Trauma Questionnaire and Childhood Experiences of Care and Abuse to assess emotional, sexual, and physical abuse | ROI (vmPFC, lateral OFC, anterior and posterior cingulate cortices, ventrolateral PFC (including inferior frontal gyrus (IFG)), dorsolateral PFC (including middle and superior frontal gyri), insular cortex, parahippocampal gyrus, temporal pole, and lateral temporal cortex (spanning inferior, middle, and superior temporal gyri)) | Thinner cortex among abused in vmPFC, right inferior frontal gyrus, left and right parahippocampal gyri, right inferior temporal gyrus, and right middle temporal gyrus compared with nonexposed controls | Age, gender, parental education | Race, IQ, handedness | 2 |
| Edmiston, Wang, Mazure, et al., 2011 | Community sample without DSM Axis I diagnoses | 42 | 12–17 | 50% Female | Threat/Deprivation | Childhood Trauma Questionnaire to assess physical abuse, physical neglect, emotional abuse, emotional neglect, and sexual abuse | Whole brain | Thinner left DLPFC, left RPF, right orbitofrontal cortex, insula and temporal association cortex with greater physical abuse; thinner RPF, parietal association cortex, cerebellum, bilateral DLPFC, dorsal ACC, SFG, OFC, sgPPC, parietal association cortex, right temporal association cortex, and left occipital association cortex, with greater neglect | Age | N/A | 1 |

(table continues)

Table 3 (continued)

| Authors | Sample | Sample size (N) | Age range ^a | Sex distribution | Early-life adversity | Adversity details | ROI or whole brain? | Brain regions with significant associations with adversity | Covariates | Group matching characteristics | Study quality rating (out of 3) |
|---|---|-----------------|--|------------------|----------------------|--|--|---|---|--|---------------------------------|
| Gold et al., 2016 | Community based sample of children in Boston, MA exposed to high rates of maltreatment | 58 | 13–20 | 60% Female | Threat | Childhood Trauma Questionnaire and Childhood Experiences of Care and Abuse to assess emotional, sexual, and physical abuse | ROIs in medial and lateral prefrontal cortex, and medial and lateral temporal cortex | Thinner cortex among abused sample in bilateral ventromedial prefrontal cortex, right orbitofrontal cortex, left temporal pole, right inferior frontal gyrus, left and right parahippocampal gyri, left and right inferior temporal gyrus, right superior temporal gyrus, and right middle temporal gyrus | Race, age, sex, and parental education | | 3 |
| McLaughlin et al., 2016 | Community based sample of children in Seattle, WA exposed to high rates of maltreatment | 60 | 18-Jun | 48% Female | Threat | Childhood Trauma Questionnaire and Childhood Experiences of Care and Abuse to assess emotional, sexual, and physical abuse | ROI in dorsal anterior cingulate and ventromedial prefrontal cortex | No significant associations with cortical thickness | Age, sex | | 3 |
| Kelly et al., 2013 | Community based sample recruited from London Social Services department | 43 | 12.77(1.19) for controls, 12.27(1.41) for maltreated | 56% Female | Threat | Social worker report using Kaufman's 4-point scale for physical abuse, emotional abuse, sexual abuse, and neglect | Whole brain | Decreased cortical thickness in mPFC in maltreated | Age and sex | Tanner stage, handedness, cognitive ability, ethnicity | 3 |
| Lawson, Duda, Avants, Wu, & Farah, 2013 | Participants from NIH Pediatric MRI Data Repository | 283 | 11.47 (3.50) | 53% Female | SES | Family income, parental education summed from two parents; parental education variable was square-root transformed | ROIs in the prefrontal cortex | Lower parental education was associated with decreased cortical thickness in right anterior cingulate cortex and left superior frontal gyrus. No associations emerged with parental income. | Age, sex, total brain volume, race, body mass index | N/A | 3 |

(table continues)

Table 3 (continued)

| Authors | Sample | Sample size (N) | Age range ^a | Sex distribution | Early-life adversity | Adversity details | ROI or whole brain? | Brain regions with significant associations with adversity | Covariates | Group matching characteristics | Study quality rating (out of 3) |
|----------------------|--|-----------------|---|------------------|----------------------|--|---------------------|--|--|------------------------------------|---------------------------------|
| Leonard et al., 2019 | Community sample from two other studies in the Greater Boston Area: one on executive function development and one on parenting intervention (only data from before the intervention included in this sample) | 115 | 4-7 | 46% Female | SES | Highest level of maternal education | Whole-Brain | At the threshold presented throughout the article ($p < .005$) there is no main effect of maternal education on thickness, but at a more liberal threshold of .05, there is a significant positive association in right superior parietal lobule / intraparietal sulcus and lateral occipital complex | Age, gender, image quality | N/A | 3 |
| Lim et al., 2018 | Community sample in South London recruited through social services and psychiatric clinics | 68 | 13-20 | 50% Female | General | Childhood Trauma Questionnaire to measure childhood physical, sexual and emotional abuse, and physical and emotional neglect. Used a sum score across the whole CTQ. | Whole brain and ROI | Thinner left precentral, postcentral and paracentral gyri in abuse group compared with healthy controls and reduced left precentral controls matched on psychiatric conditions. ROI analyses also revealed reduced cortical thickness in left insula and right lateral orbitofrontal cortex in the abuse group compared to healthy controls. | IQ, age, mean cortical thickness | Age, gender, psychiatric disorders | 2 |
| Mackey et al., 2015 | Community sample from Boston, Massachusetts area | 58 | Lower income: 14.47 (0.38), Higher income: 14.35 (0.47) | 53% Female | SES | Free or reduced-price lunch status obtained from the Massachusetts Department of Elementary and Secondary Education | Whole brain | Thinner cortex in lower income group in bilateral temporal and occipital lobes and in right lateral prefrontal cortex | Sex, intracranial volume; associations also hold when controlling for race and ethnicity | None | 3 |

(table continues)

Table 3 (continued)

| Authors | Sample | Sample size (N) | Age range ^a | Sex distribution | Early-life adversity | Adversity details | ROI or whole brain? | Brain regions with significant associations with adversity | Covariates | Group matching characteristics | Study quality rating (out of 5) |
|------------------------|--|-----------------|------------------------|------------------|----------------------|---|---------------------|--|--|--------------------------------|---------------------------------|
| McDermott et al., 2019 | Community sample collected at NIMH | 623 | 5–25 | 48% Female | SES | Hollingshead Two-Factor Index of Social Position using maternal report of maternal occupation and education | Whole brain | SES is positively associated with mean cortical thickness, but when looking at regional specificity, found that the association was only significant in the right supramarginal gyrus. | Sex, age, each individual's ID (to account for multiple longitudinal scans per individual) and family ID (to account for the presence of dizygotic twin pairs and siblings in the sample) as nested random effects. IQ as a sensitivity analysis | N/A | 3 |
| Jednoróg et al., 2012 | Community sample from Paris, France | 23 | 8–10 | 57% Female | SES | Hollingshead Two-Factor Index of Social Position using maternal report of maternal occupation and education | Whole brain | Positive associations between SES and thickness in L angular gyrus, L Heschl's gyrus, L post-ventral cingulate, and L anterior occipital sulcus. Negative associations between SES and thickness in L fronto-marginal gyrus/sulcus, L middle frontal sulcus, and L intraparietal sulcus. | None | N/A | 1 |
| Noble et al., 2015 | Pediatric Imaging, Neurocognition, Genetics Study (PING) | 1,148 | 3–20 | 48% Female | SES | Parent report of income and education | Whole brain | No significant associations between cortical thickness and SES or SES × Age interactions | Age, age-squared, scanner, sex, genetic ancestry | N/A | 3 |
| Piccolo et al., 2016 | Pediatric Imaging, Neurocognition, Genetics Study (PING) | 1,148 | 3–20 | 48% Female | SES | Parent report of income and education | Whole brain | Age(squared) × SES (both income and education) interaction in average cortical thickness, such that lower SES children demonstrate faster thinning across the whole cortex. No specific regions survive correction for multiple comparisons. | SES measure, age, age-squared, scanner, sex, genetic ancestry, and parental SES Measure × Age | N/A | 3 |

(table continues)

Table 3 (continued)

| Authors | Sample | Sample size (N) | Age range ^a | Sex distribution | Early-life adversity | Adversity details | ROI or whole brain? | Brain regions with significant associations with adversity | Covariates | Group matching characteristics | Study quality rating (out of 3) |
|---|---|-----------------|------------------------|------------------|----------------------|---|---------------------|--|---|--------------------------------|---------------------------------|
| Rosen, Sheridan, Sambrook, Meltzoff, & McLaughlin, 2018 | Community based sample of children in Seattle, WA exposed to high rates of maltreatment | 53 | 6–19 | 48% Female | Deprivation/SES | SES-family income divided by the federal poverty line for a family of that size; cognitive stimulation-parent report using Home Observation Measurement of the Environment (HOME)-short form | Whole brain and ROI | Lower levels of cognitive stimulation were associated with thinner cortex in left superior parietal lobule and left middle frontal gyrus. There were no associations with SES and no significant whole brain associations. | Age, sex, violence exposure | N/A | 3 |
| Hoedt et al., 2015 | 110 postinstitutionalized children, from Minnesota International Adoption Project | 172 | 12–14 | 61% Female | Deprivation | Previously institutionalized children adopted into the United States | Whole brain | Thinner cortex in right inferior frontal gyrus among previously institutionalized children compared with controls. | Age, sex | | 3 |
| McLaughlin et al., 2014 | Bucharest Early Intervention Project (BEIP) | 80 | 8–10 | 50% Female | Deprivation | Part of a randomized control trial where half of the institutionalized children were placed in high quality foster care. There were no differences between the care as usual group and foster care group, so all analyses compared the Ever Institutionalized Group (EIG) to the Never Institutionalized Group (NIG). | Whole brain | Widespread reductions in cortical thickness across frontal, parietal and temporal lobes in children who were ever institutionalized. | Age, sex, total brain volume, and TR length (due to different acquisition parameters) | | 3 |

Note. SES = socioeconomic status; ROI = region of interest; OFC = orbital frontal cortex; PFC = prefrontal cortex; DLPFC = dorsolateral prefrontal cortex; RPFC = right prefrontal cortex; ACC = anterior cingulate cortex; SFG = superior frontal gyrus; TR = repetition time.

^a Age range (in. years) was the most commonly used descriptor of the full sample. When this was not available, means and standard deviations are given.

Table 4
Characteristics of Individual Studies Included in the Amygdala-mPFC Review

| Authors | Sample | Sample size (N) | Age range | Sex distribution | Early-life adversity | Adversity details | Seed-to-seed or whole brain? | Task | Associations with amygdala-mPFC connectivity | Covariates | Group matching characteristics | Study quality rating (out of 4) |
|---|--|-----------------|-----------|------------------|----------------------|--|------------------------------|----------------------------------|---|---------------------|--|---------------------------------|
| Cisler, Scott, Smitherman, Lenow, & Kilts, 2013 | Community based sample in Arkansas | 30 | 12–16 | 100% female | Threat | Assessed using the trauma assessment section of the National Survey of Adolescents (sexual assault, physical assault, severe abuse from caregiver) | Whole brain | Implicit emotion processing task | Greater connectivity between right amygdala and left middle frontal gyrus, and right amygdala and left perigenual anteriorcingulate | None | Age, ethnicity, anxiety and depression diagnoses | 3 |
| Colich et al., 2017 | Community based sample in the San Francisco Bay area | 137 | 9–13 | 57% female | Threat | Based on modified version of Traumatic Events Screening Inventory for Children | Seed-to-seed | Implicit emotion regulation task | ELA was associated with increased negative connectivity between the right ventrolateral prefrontal cortex and bilateral amygdala | Age | N/A | 3 |
| Gee et al., 2013 | Post institutionalized children adopted into the United States and comparison children | 89 | 6–18 | 56% female | Deprivation | Sample of previously institutionalized children adopted into the United States | Whole brain | Emotional face viewing task | Comparison group children showed positive amygdala-mPFC connectivity during viewing of fearful faces while adolescents showed comparison group adolescents showed negative connectivity. In contrasts, both P1 children and adolescents showed negative amygdala-mPFC connectivity. | Amygdala reactivity | Pubertal status | 2 |
| Keding & Herringa, 2016 | Community based sample in Wisconsin; sampled specifically for PTSD | 53 | 8–18 | 58% female | Threat | All trauma exposed participants also had PTSD. Trauma exposures were sexual abuse, traumatic death of loved one, witnessing violence, accident, physical abuse | Whole brain | Implicit dynamic emotion face | PTSD sample showed reduced connectivity between amygdala and both dorsal anterior cingulate and ventrolateral PFC during angry trials and increases connectivity to happy faces. Control participants showed the opposite pattern of results. | Age, sex | Age, pubertal status, IQ, handedness | 4 |

(table continues)

Table 4 (continued)

| Authors | Sample | Sample size (N) | Age range | Sex distribution | Early-life adversity | Adversity details | Seed-to-seed or whole brain? | Task | Associations with amygdala-mPFC connectivity | Covariates | Group matching characteristics | Study quality rating (out of 4) |
|--|---|-----------------|-----------|------------------|----------------------|--|------------------------------|----------------------------|---|---------------------|--------------------------------|---------------------------------|
| Marusak, Martin, Etkin, & Thomason, 2015 | Community based sample in Detroit, MI | 30 | 9-17 | 80% female | Threat | At least one traumatic life event endorsed on parent or child report of Children's Trauma Assessment Center Screen Checklist. These included sexual abuse, physical abuse, neglectful home environment, exposure to domestic violence, exposure to other violence, multiple separations from caregiver | Whole brain | Emotional Stroop | During emotional conflict regulation, trauma exposed group demonstrated positive amygdala - pregenual cingulate cortex connectivity while the control group demonstrated negative connectivity. During emotion processing, exposure to abuse was associated with more negative task-related functional connectivity of left amygdala and 2 vmPFC clusters (mOFC and sgACC) relative to control participants | None | Age, sex, IQ | 2 |
| Peeverill, Sheridan, Busso, & McLaughlin, 2019 | Community based sample in Boston, MA exposed to high rates of maltreatment | 57 | 13-20 | 61% female | Threat | Childhood Trauma Questionnaire and Childhood Experiences of Care and Abuse to assess emotional, sexual, and physical abuse | Whole brain | Emotion regulation task | During emotion processing, exposure to abuse was associated with more negative task-related functional connectivity of left amygdala and 2 vmPFC clusters (mOFC and sgACC) relative to control participants | None | Sex, race, IQ, handedness, SES | 4 |
| Silvers et al., 2016 | Postinstitutionalized children adopted into the United States and comparison children | 89 | 7-16 | 62% female | Deprivation | Sample of previously institutionalized children adopted into the United States | Whole brain | Aversive learning paradigm | During a fear conditioning task, PI youth demonstrate positive connectivity between the amygdala and vmPFC, dmPFC, and vIPFC, while the comparison group demonstrates negative connectivity | Average head motion | Age, IQ | 3 |

Note. SES = socioeconomic status; OFC = orbital frontal cortex; PFC = prefrontal cortex; ACC = anterior cingulate cortex; ELA = early life adversity.

medial PFC (Busso, McLaughlin, Brueck, et al., 2017; Edmiston et al., 2011; Gold et al., 2016; Kelly et al., 2013). Four found additional associations that follow the same pattern of decreased thickness among threat-exposed youths in regions including the lateral PFC (Busso, McLaughlin, Brueck, et al., 2017; Edmiston et al., 2011; Gold et al., 2016; Lim et al., 2018). Three found evidence for reduced thickness in the orbitofrontal cortex (Edmiston et al., 2011; Gold et al., 2016; Lim et al., 2018) and three found evidence for reduced thickness in medial and lateral temporal cortex (Busso, McLaughlin, Brueck, et al., 2017; Edmiston et al., 2011; Gold et al., 2016). In contrast, one study that spanned a larger age range found no association between experiences of threat and cortical thickness in regions of interest in the dorsal anterior cingulate or ventromedial PFC (McLaughlin, Sheridan, et al., 2016). As a whole, these studies provide support for the hypothesis that experiences of threat are associated with accelerated development, especially in the ventromedial PFC.

Deprivation. A total of four studies ($N = 353$) met inclusion criteria for our review of the association between experiences of deprivation and cortical thickness. This included two studies investigating cortical structure among previously institutionalized children (Hodel et al., 2015; McLaughlin, Sheridan, Winter, et al., 2014) and two investigating the association between cognitive stimulation/deprivation in the home environment and cortical structure (Avants et al., 2015; Rosen et al., 2018). Both studies of institutionalized children demonstrate support for the hypothesis that experiences of deprivation are associated with accelerated cortical thinning. In one study institutionalization was associated with widespread reductions in cortical thickness, including in nodes of the frontoparietal and dorsal attention networks (superior parietal lobule, frontal pole, superior frontal gyrus), default mode network (inferior parietal cortex, precuneus, midcingulate), lateral temporal cortex, parahippocampal cortex, and insula at age 8–10 years (McLaughlin, Sheridan, Winter, et al., 2014). In contrast, Hodel et al. (2015) examined only prefrontal cortex regions of interest and found reduced cortical thickness only in the inferior frontal gyrus among previously institutionalized children compared with controls at age 12–14 years.

The other two studies investigated cortical thickness and its association with cognitive stimulation/deprivation in the home environment. In a cross-sectional study spanning children and adolescents, cognitive stimulation (i.e., lower deprivation) was positively associated with cortical thickness in two nodes in the left, but not right frontoparietal network (superior parietal lobule and middle frontal gyrus; Rosen et al., 2018). These results are consistent with the idea that deprivation (i.e., low cognitive stimulation) is associated with accelerated development. In contrast, in a longitudinal study, results revealed that cognitive stimulation at age 4, but not at age 8, was negatively associated with cortical thickness at age 19, such that lower deprivation was associated with thicker cortex in the ventral temporal cortex and inferior frontal gyrus. These results suggest that cognitive deprivation is associated with delayed development in these regions.

SES. Eight studies met the criteria for inclusion examining SES and cortical thickness ($N = 2,303$; Jednoróg et al., 2012; Lawson, Duda, Avants, Wu, & Farah, 2013; Leonard et al., 2019; Mackey et al., 2015; McDermott et al., 2019; Noble et al., 2015; Piccolo, Merz, He, Sowell, & Noble, 2016; Rosen et al., 2018). Of those, five found that low SES was associated with thinner cortex

across large swaths of cortex encompassing the frontoparietal network (lateral prefrontal cortex, superior parietal cortex), default mode network (lateral temporal cortex, precuneus), and the visual system (lateral occipital and ventral temporal cortex), supporting the idea that low SES is associated with accelerated cortical development. Piccolo, Merz, He, Sowell, and Noble (2016) found that SES moderates the association between age squared and cortical thickness such that low SES individuals show a sharper decline in cortical thickness early in development, which may reflect accelerated development compared with higher SES individuals. Additionally, Lawson and colleagues (2013) demonstrate that low parent education is associated with reduced cortical thickness in the right cingulate gyrus and right superior frontal gyrus, and Mackey and colleagues (2015) demonstrate that low SES individuals demonstrate thinner cortex across much of the brain including the frontoparietal network (right middle frontal gyrus, left superior parietal lobule, right frontal pole), default mode network (left precuneus, bilateral lateral temporal cortex, right frontal pole), and visual system (bilateral occipital and ventral temporal cortex). McDermott et al. (2019) demonstrate that SES is positively associated with mean cortical thickness, but when looking at regional specificity, found that the association was only significant in the right supramarginal gyrus. Two studies spanning large age ranges (Noble et al., 2015; Rosen et al., 2018) found no association between SES and cortical thickness. Importantly, Noble et al. (2015) and Piccolo et al. (2016) used the same sample and while there were no main effects of SES on cortical thickness and no Age \times SES interactions (Noble et al., 2015), Piccolo et al. (2016) demonstrate an Age Squared \times SES interaction such that children from low-income households demonstrate accelerated thinning compared with high-income counterparts. One other study in young children (Leonard et al., 2019) found that SES was positively associated with cortical thickness in the occipital cortex and posterior intraparietal sulcus, but only at a very liberal threshold.

Amygdala-PFC connectivity.

Threat. Our search yielded five articles that evaluated the association between amygdala-PFC connectivity and threat-related experiences. Of these five studies ($N = 250$), three support the hypothesis that experiences of threat are associated with accelerated maturation of this network such that threat-exposed children exhibit more negative connectivity between amygdala and PFC during an implicit dynamic emotion face task, an explicit affect labeling task, and viewing of negative versus neutral images, than children of the same age (Colich et al., 2017; Keding & Herringa, 2016; Peverill, Sheridan, Busso, & McLaughlin, 2019). The two other studies demonstrate the opposite pattern of results such that children who have experienced threat demonstrate more positive task-related amygdala-PFC connectivity compared to controls while viewing emotional faces and while performing an emotional conflict task (Cisler, Scott Steele, Smitherman, Lenow, & Kilts, 2013; Marusak et al., 2015). These mixed findings do not provide conclusive evidence that experiences of threat are associated with either accelerated or delayed development of the circuits.

Deprivation. Our search yielded two articles ($N = 89$) that evaluated the association between experiences of deprivation and task-related connectivity between mPFC and amygdala. Of these two studies, one demonstrated evidence for accelerated development of these circuits such that children who have experienced

deprivation exhibit more negative connectivity earlier in development than comparison children in a passive viewing task of facial emotion (Gee, Gabard-Durnam, et al., 2013). The other study found the opposite pattern of results such that children who had experienced deprivation demonstrated more positive amygdala-mPFC connectivity than comparison children in a fear conditioning paradigm (Silvers et al., 2016).

Discussion

Through the use of meta-analysis and systematic review, we provide evidence for an association between ELA and accelerated biological aging, as measured by pubertal timing, cellular aging, and cortical thinning in childhood and adolescence. We found no evidence for a consistent association of ELA and accelerated development of amygdala-mPFC connectivity. First, although we observed an overall association of ELA with pubertal timing, moderator analysis revealed that ELA characterized by threat, but not deprivation or SES, was associated with accelerated pubertal development with a small effect size, suggesting specificity in the link between ELA and pubertal timing to threat-related adversity. Second, ELA was also associated with accelerated cellular aging as measured by both leukocyte telomere length and DNA methylation age. Again, moderator analyses revealed accelerated aging among children exposed to threat of moderate effect size, but no association with deprivation or SES. However, given the limited number of studies published on early adversity and cellular aging, these analyses, though promising in their consistency with the other metrics of biological aging, should be interpreted as preliminary. Finally, the results of our systematic review of the effects of ELA on brain development revealed a consistent association between ELA and accelerated cortical thinning across multiple types of ELA, although the specific brain regions involved varied by adversity type. Associations of threat with cortical thinning were most consistent in ventromedial PFC, whereas associations of deprivation with cortical thinning were most consistent in the frontoparietal and default mode networks and the ventral visual stream. In contrast, there was no consistent association of ELA with amygdala-mPFC connectivity. These results support the broad predictions of the DMAP model in demonstrating divergent patterns of association of different dimensions of ELA with pubertal timing, cellular aging, and cortical thickness and extend this model to encompass biological aging as an additional developmental domain beyond those proposed in the original theory where the effects of different forms of adversity are at least partially distinct.

ELA and Pubertal Timing

ELA was associated with accelerated pubertal timing overall, but significant heterogeneity existed in this effect as a function of adversity type. The strength of the association of ELA with pubertal timing was significantly moderated by adversity type, such that the association between ELA and accelerated pubertal timing was specific to experiences characterized by threat, and showed no association with deprivation or SES. These results are consistent with predictions from life history models that exposure to environmental harshness (i.e., threat) in childhood accelerates sexual maturation, in order to increase chances of reproduction prior to

mortality (J. Belsky et al., 2012; Ellis et al., 2009). They are also consistent with recent findings from our lab demonstrating that threat-related adversities are associated with accelerated pubertal development even after adjustment for exposure to co-occurring deprivation (Colich et al., 2020; Sumner et al., 2019). Some have argued that ELA impacts pubertal timing through influences on the hypothalamic-pituitary-adrenal (HPA) axis (Negri, Saxbe, et al., 2015; Saxbe, Negri, Susman, & Trickett, 2015). Given associations between threat-related adversity and altered diurnal patterns of cortisol and cortisol reactivity in childhood (Carpenter, Shattuck, Tyrka, Geraciotti, & Price, 2011; Jaffee et al., 2015; King et al., 2017; Tyrka et al., 2009), it is plausible that trauma-related alterations of the HPA-axis may interact with the HPG-axis to accelerate the onset of pubertal development (J. Belsky, Ruttle, Boyce, Armstrong, & Essex, 2015; Negri, Saxbe, et al., 2015; Saxbe, Negri, Susman, & Trickett, 2015).

It is also important to consider the role of gene-environment correlations in the association between threat-related ELA and pubertal timing (Cousminer, Widén, & Palmert, 2016; Harden, 2014; Rowe, 2002). For instance, mothers who experience earlier onset of puberty may reproduce at an earlier age, and have children who are both more likely to experience trauma and an earlier onset of puberty (de Vries, Kauschansky, Shohat, & Phillip, 2004; Towne et al., 2005). This topic has been written on extensively (Barbaro, Boutwell, Barnes, & Shackelford, 2017; Gaydosh, Belsky, Domingue, Boardman, & Harris, 2018; Mendle et al., 2006; Tither & Ellis, 2008), however most studies exploring the association between ELA and age at menarche do not control for potential genetic confounding, as the influence of genetics versus the shared and nonshared environment on development can be difficult to disentangle (see Gaydosh, Belsky, Domingue, Boardman, & Harris, 2018; Mendle et al., 2006 for research designs that have attempted to disentangle these factors). However, many more studies have used maternal age at menarche as a covariate in analyses exploring associations between ELA and age at menarche, including nine of the 43 studies included in the pubertal timing meta-analysis. We found no variation in effect size in the studies that controlled for maternal age of menarche from those that did not, which provides some support for the notion that these effects are environmentally mediated to at least some degree. Future research using genetically informed designs is needed to disentangle the genetic versus environmental pathways through which ELA influences pubertal timing in order to better understand the mechanisms linking threat-related ELA and accelerated pubertal development.

We did not find support for our hypothesis that ELA characterized by deprivation would show an association with delayed pubertal timing. Instead, we found no association between deprivation and pubertal timing. Life history theory posits that deprivation of bioenergetics resources could result in delayed maturation and later pubertal development (J. Belsky et al., 2012; Ellis et al., 2009). In this analysis, we included emotional and physical neglect (Boynton-Jarrett & Harville, 2012; Colich et al., 2020; Mendle et al., 2014, 2011; Mendle, Ryan, et al., 2016; Ryan et al., 2015; Sumner et al., 2019), and early institutionalization (Hayes & Tan, 2016; Johnson et al., 2018; Reid et al., 2017; Sonuga-Barke, Schlotz, & Rutter, 2010; Teilmann et al., 2009) as forms of deprivation. It is likely that deprivation in our modern context, represented by the forms of psychosocial deprivation included in

our analyses, is qualitatively different from deprivation in our evolutionary past, and as conceptualized in life history theory. Whereas there is strong evidence for associations of food insecurity and severe deprivation associated with war and famine with delayed pubertal timing (Prebeg & Bralic, 2000; van Noord & Kaaks, 1991), there is less support for association of early institutionalization (where most children experience severe emotional deprivation but not necessarily food insecurity) with pubertal timing (Johnson et al., 2018; Reid et al., 2017). Our novel finding that deprivation is unrelated to the pace of biological aging has clear theoretical implications for life history theory, which to date has made no clear predictions about how psychosocial forms of deprivation should impact the pace of aging and relevant reproductive milestones.

In this meta-analysis, we decided to isolate the effects of deprivation (including neglect and early life institutionalization) from the effects of SES. Low SES, defined as poverty and low parental education, has previously been used as an indicator of deprivation in studies that adjust for co-occurring threat exposure (e.g., Lambert et al., 2017; Sheridan et al., 2017), based on extensive evidence demonstrating that children from families with low parental education and/or income experience reductions in cognitive and social stimulation than children from higher-SES families (Bradley et al., 2001; Duncan & Magnuson, 2012). However, within the DMAP model, poverty is conceptualized as a risk factor for both threat and deprivation, rather than a direct marker of deprivation (McLaughlin, Sheridan, Lambert, et al., 2014; Sheridan & McLaughlin, 2014). Indeed, there is a strong association between SES and exposure to violence (Foster, Brooks-Gunn, & Martin, 2007) in addition to deprivation. Here, the association of SES with accelerated pubertal timing was not significant, potentially reflecting the fact that SES is a risk marker for exposure to other forms of adversity (e.g., trauma) that are associated with accelerated pubertal development rather than having a direct association with pubertal timing. Despite little overlap in inclusion/exclusion criteria and resulting studies included in the analyses, results of a recent meta-analysis examining associations between SES and pubertal timing in males similarly observed no association between SES and pubertal timing (Xu, Norton, & Rahman, 2018). Overall, these findings highlight the importance of considering the nature of the exposure when exploring the developmental consequences of ELA. Future research should carefully distinguish between the effects of threat- and deprivation-related adversities on pubertal timing.

There was no evidence for the moderating effect of metric of pubertal timing (age of menarche vs. secondary sex characteristics) on associations of ELA with pubertal timing, or whether studies controlled for BMI or exposure to other adversity types. However, sex did moderate the association between deprivation-related adversities and pubertal timing such that the more males included in the sample, the more positive the association between deprivation exposure and pubertal timing, suggesting more delayed pubertal maturation. These results suggest that deprivation may have a differential effect on males and females. Sex differences in the impact of adversity on pubertal timing are not surprising, given significant sexual dimorphisms in the development of biological systems beginning in early development and continuing throughout sexual maturation and adulthood (Cousminer et al., 2016). Animal models of nutritional challenge (including undernutrition

and obesity) have differential effects on pubertal timing in male and female rats (Sánchez-Garrido et al., 2013), suggesting that sex-specific metabolic effects of deprivation may have a significant impact on pubertal timing. Future research in humans studying the impact of food insecurity specifically, should explore this question directly. These results, along with the fact that pubertal timing differs significantly in males and females (Dorn & Biro, 2011), suggest that future analyses exploring the impact of deprivation on pubertal timing should be conducted separately in males and females.

Race/ethnicity also significantly moderated the association between SES and pubertal timing, such that the higher percentage of white individuals in the sample, the more negative the association between SES-related adversity and pubertal timing (i.e., the more accelerated the pattern of development). Documented differences in pubertal timing depending upon race/ethnicity suggest that Mexican American and non-Hispanic Black girls develop secondary sex characteristics earlier and experience earlier age at menarche than non-Hispanic White girls (Biro et al., 2010). Similarly, there are well-documented differences in SES across race/ethnicity among adolescents in the U.S. (McLaughlin, Costello, et al., 2012). These results highlight the need to carefully consider race and ethnicity in studies examining ELA and pubertal timing and evaluate whether these factors moderate observed associations.

ELA and Cellular Aging

ELA was associated with accelerated cellular aging, as measured by both leukocyte telomere length and DNAm age, such that greater exposure to adversity was associated with decreased telomere length and more advanced DNAm age relative to chronological age. These results replicate earlier meta-analyses conducted in adult populations of adversity with DNAm age (Wolf et al., 2018) and telomere length (Hanssen, Schutte, Malouff, & Epel, 2017). These results are also broadly consistent with an earlier meta-analysis exploring the effects of stress exposure (broadly defined) on telomere length (Coimbra et al., 2017). The consistency in findings is striking given significant differences in the approach of these meta-analyses. Whereas Wolf et al. (2018) and Hanssen, Schutte, Malouff, and Epel (2017) examined the association between ELA and accelerated biological aging in adults, Coimbra et al. (2017) examined a broad range of stressors in childhood and adolescence, including stress reactivity as indexed by cortisol reactivity and parental psychopathology. We did not include cortisol reactivity or parental psychopathology as adversities in the current meta-analysis, yet results are largely consistent with Coimbra et al. (2017). However, it is important to note the small number of studies included and the potential publication bias present in this meta-analysis. Thus, these results should be interpreted as preliminary, and further meta-analyses should be conducted once more studies on this topic are conducted.

Despite the small number of studies, we conducted a stratified analysis and found that exposure to threat was associated with accelerated cellular aging of moderate magnitude, whereas neither deprivation nor SES was associated with cellular aging. These results support our hypotheses based on the DMAP model that threat-related adversities would be specifically associated with accelerated cellular aging. Again, these differential associations should be interpreted with caution, however, as the number of

studies examining deprivation and SES with cellular aging was small. Similarly, Egger's linear regression test was significant and results of the p-curve analysis suggest potential publication bias in this sample of studies, which is unsurprising given the small number of studies included in these analyses. Nonetheless, these findings provide preliminary evidence that threat-related adversities are associated with accelerated cellular aging. Greater work is needed to clarify the magnitude and direction of associations of deprivation and childhood SES with cellular aging.

These cellular aging results are consistent with "internal prediction" models of predictive adaptive response (Nettle et al., 2013; Rickard et al., 2014), which propose that ELA negatively influences physical health through altered cellular development as a result of reduced energy to build or repair cellular tissue. This theory expands earlier models focused on allostatic load, or the accumulation of environmental insults on biological systems (Danese & McEwen, 2012; McEwen, 1998; McEwen & Stellar, 1993), and developmental origins of health and disease models (Barker, 2007) focused on how early experience programs biological development to adapt to later environmental conditions. These theories all suggest that accelerated cellular aging occurs as a result of environmental experiences in development. Accelerated cellular aging following ELA may occur in response to alterations in mitochondrial function, oxidative stress, and inflammation (Shalev, 2012). Although we observed consistent effects of ELA across two metrics of cellular aging (telomere length and DNAm age), some work indicates that exposure to ELA may not have consistent associations across other metrics of biological aging (D. W. Belsky et al., 2018). Future research should explore the effect of distinct forms of ELA on additional metrics of allostatic load that may represent accelerated biological aging, including cardiometabolic risk, inflammation, and respiratory health.

Similar to pubertal timing, it is important to consider the role of gene-environment correlations when examining associations among ELA and cellular aging. It is plausible that a higher mutation load (i.e., number of genetic point mutations), associated with many physical and mental health problems, may underlie both exposure to adversity and accelerated cellular aging. For instance, parents who have higher mutation loads that may put them at risk for greater physical and mental health problems may then have children who are both more likely to experience trauma and also show accelerated cellular aging. Thus, the link between ELA and cellular aging could potentially be accounted for by genetic factors that could contribute to both adverse early environments and accelerated cellular aging. Future research should explore this important alternative explanation.

ELA and Brain Development

Cortical thickness. Consistent with the hypothesis that ELA leads to accelerated development, the majority of studies investigating the association between ELA and cortical thickness found that children exposed to adversity of any kind have thinner cortex than their nonexposed counterparts across threat, deprivation, and SES. However, it is critical to note that the specific brain regions that exhibited this pattern of thinning varied consistently by adversity type. This specificity may reflect precocious maturation of particular regions of the brain depending on the particular type of adversity experienced, reflecting adaptive experience-related tun-

ing of neural systems to the environment in which they are developing. There was remarkable consistency across studies of threat-related experiences and cortical thickness—two of which were high-quality, one that was moderate quality, and one that was poor quality—with the majority observing thinner cortex in the ventromedial PFC among children exposed to trauma (Busso, McLaughlin, Brueck, et al., 2017; Gold et al., 2016; Kelly et al., 2013). The vmPFC is implicated in multiple forms of emotion processing, including recall of extinction learning, appraisal of episodic memories, and appraisal of simulated future events (Dixon, Thiruchselvam, Todd, & Christoff, 2017; Milad & Quirk, 2012; Phelps & LeDoux, 2005). The vmPFC has strong interconnections with the amygdala and modulates amygdala activation based on appraisals and prior learning (Phelps & LeDoux, 2005). Accelerated thinning of this region among children exposed to trauma could reflect earlier or more frequent recruitment of this region to modulate amygdala responses, which are well-established to be elevated in response to threat cues among children exposed to violence (Hein et al., 2017; McCrory, De Brito, & Viding, 2011; McLaughlin, Peverill, Gold, Alves, & Sheridan, 2015), ultimately producing more rapid specialization of this region, potentially through more rapid synaptic pruning or increased myelination in this region.

Association between experiences of deprivation and cortical structure were more mixed. While one high-quality study of previously institutionalized children demonstrated widespread reductions in cortical thickness across regions of the frontoparietal, default mode, and visual networks (McLaughlin, Sheridan, Winter, et al., 2014), another high-quality study that focused only on prefrontal cortex regions of interest found reduced cortical thickness only in the inferior frontal gyrus (Hodel et al., 2015). Studies investigating low cognitive stimulation have also been mixed in the two high-quality studies included here. One study found that low cognitive stimulation was associated with thinner cortex in the frontoparietal network across childhood and adolescence (Rosen et al., 2018), and another found that lower cognitive stimulation was associated with thicker cortex in the lateral prefrontal cortex and ventral visual stream in late adolescents (Avants et al., 2015). Differences in the age of the samples and timing of assessment of cognitive stimulation may have contributed to these inconsistent findings.

The studies investigating SES-related differences in cortical thickness also had mixed results. Two studies—one high-quality and the other low-quality—found widespread positive associations with SES and thickness in the frontoparietal and default mode networks and the visual system (Jednoróg et al., 2012; Mackey et al., 2015). One study of moderate-quality focused only on the PFC also found similar reductions in thickness (Lawson et al., 2013). Another high-quality study found overall SES related differences in mean cortical thickness, and a regional specificity analysis showed that higher SES was associated with greater cortical thickness specifically in the supramarginal gyrus, a region in the default mode network (McDermott et al., 2019). Broadly, these regions are involved in a wide range of cognitive processing including working memory, cognitive control, autobiographical memory, theory of mind, and visual processing (M. W. Cole & Schneider, 2007; Corbetta, Kincade, & Shulman, 2002; DiCarlo, Zoccolan, & Rust, 2012; Spreng & Grady, 2010). Given that SES-related differences in many of these domains are well-established (Noble, McCandliss, & Farah, 2007), these findings could represent a

neural mechanism explaining these SES-related differences in cognitive function. In contrast, two high-quality studies spanning a large age range did not find SES-related differences in thickness (Noble et al., 2015; Rosen et al., 2018). This could be because SES associations with cortical thickness vary across childhood and adolescence. Indeed, using the same sample as Noble et al., 2015, Piccolo et al. (2016) found an SES by age interaction for average cortical thickness such that lower SES was associated with a more rapid age-related decrease in cortical thinning early in development while higher SES was associated with a less steep linear decline in thickness from childhood to adolescence. These findings are consistent with the hypothesis that low SES is associated with accelerated maturation of the cortex.

Linear decreases in cortical thickness from infancy to adulthood are well-established (LeWinn et al., 2017; Vijayakumar et al., 2016; Wierenga et al., 2014), although the mechanisms by which this pattern emerges remain in question. One interpretation is that synaptic connections that are underutilized or inefficient are pruned, allowing the brain to adapt to the environment in which it develops (Huttenlocher, 1979; Petanjek et al., 2011; Rakic, Bourgeois, Eckenhoff, Zecevic, & Goldman-Rakic, 1986). If pruning is the primary mechanism driving cortical thinning, it is possible that ELA-related differences in cortical thickness are due to accelerated pruning. In the case of deprivation-related experiences, this may be due to a lack of experience with socially or cognitively stimulating environments (McLaughlin, Sheridan, & Nelson, 2017). Alternatively, greater pruning could reflect precocious specialization and maturation of circuits utilized more frequently by children exposed to ELA; in the absence of behavioral data associated with specific patterns of cortical thinning, caution is warranted in interpreting these patterns as either adaptive or maladaptive (Ellwood-Lowe, Sacchet, & Gotlib, 2016). Other work suggests that age-related decreases in cortical thinning may actually be due to increases in myelination across development (Natu et al., 2019, 2018; Sowell et al., 2004). Increased myelination, which is most pronounced in deeper cortical layers may increase the intensity of voxels at the gray-white matter border, therefore making the cortex appear thinner across age. If myelination is the primary mechanism by which cortical thinning happens, it is possible that increased cortical thickness in response to ELA may be due to faster development of structural connectivity between regions. Of course, these mechanisms are not mutually exclusive and future longitudinal work measuring multiple forms of ELA utilizing both T1-weighted imaging and diffusion tensor imaging is needed to disentangle the precise mechanisms by which ELA leads to thinner cortex in youths.

Estimates of heritability of cortical thickness ranges across specific regions of the cortex but have been shown to be consistently highly heritable (Blokland, De Zubicaray, McMahon, & Wright, 2012; Schmitt et al., 2008; Van Soelen et al., 2012; Winkler et al., 2010). However, despite high levels of heritability, environmental factors have also been shown to contribute to cortical thickness patterns across development in twin studies that control for genetic contributions to neural outcomes (Bootsman et al., 2015; Joshi et al., 2011; Yang et al., 2012). It is therefore clear that both the environment and genetic factors influence adversity-related differences in cortical structure. Only two studies reviewed here control for any genetic influence (Noble et al., 2015; Piccolo et al., 2016), but those studies control for genetic ancestry (a proxy

for race) and not any genetic factors known to directly influence cortical thickness. One other study directly addresses the issue of heritability of cortical thickness in the discussion (Avants et al., 2015). That study demonstrated an age-dependent association between cognitive stimulation and cortical thickness such that cognitive stimulation at age 4 but not 8 is associated with differences in cortical thickness in late adolescence. However, as noted by the authors, while it is possible that there is a genetic influence on cortical thickness of parents that then influences the environment, it is unclear how this would explain differential timing of the environmental influence. It is also important to note that cortical thickness is positively associated with IQ in developmental samples, which may have implications for interpreting heritability of SES and cortical thickness (Karama et al., 2009, 2011). However, it has been argued that IQ should not be used as a covariate in analyses of neurocognitive development (Dennis et al., 2009), but many previous studies have conceptualized IQ as an outcome that is associated with cortical structure and have investigated cortical structure as a mechanism explaining SES-related differences in IQ (Hair, Hanson, Wolfe, & Pollak, 2015; Noble et al., 2015). Future studies focused on childhood adversity will be needed to disentangle the environmental and genetic contributions to cortical thickness.

Amygdala-PFC connectivity. Existing work examining ELA and task-related amygdala-PFC connectivity has produced mixed findings. Across both threat and deprivation, approximately half of the studies—three of which were high-quality and one of which was moderate-quality—observed that ELA was associated with more negative functional connectivity, indicating accelerated development (Colich et al., 2017; Gee, Gabard-Durnam, et al., 2013; Keding & Herringa, 2016; Peverill et al., 2019), while several others—two of which were moderate-quality and one of which was poor-quality—showed the opposite pattern of results such that youths exposed to ELA demonstrate more positive amygdala-PFC connectivity than nonexposed youths, indicating delayed development (Cisler, James, et al., 2013; Marusak et al., 2015; Silvers et al., 2016). Therefore, existing work has yet to provide clear evidence for an association between ELA and accelerated development of these systems. However, overall more studies showed evidence for an association between adversity and greater negative amygdala-PFC connectivity than for greater positive connectivity and these studies were overall of higher quality. Moreover, there is no clear evidence that specific types of adversity have differential influences on the development of this circuit.

One possibility is that amygdala-PFC functional connectivity is not a reliable marker of neural development (Zhang, Padmanabhan, Gross, & Menon, 2019). Unlike cortical thickness which has been studied widely across large representative samples (for review see Vijayakumar et al., 2016), research documenting amygdala-PFC connectivity as a marker of maturation is more modest (Gee, Humphreys, et al., 2013; Kujawa et al., 2016; Silvers et al., 2016; Wu et al., 2016), and to our knowledge, all of the studies that have demonstrated a developmental shift in this circuit have been cross-sectional. Recently, a large-scale cross-sectional study of 749 children, adolescents, and adults failed to replicate age-related developmental patterns in amygdala-PFC connectivity during emotion face processing (Zhang et al., 2019). As such, it is unclear whether amygdala-mPFC connectivity is a reliable marker of neural maturation. Alternatively, while all these tasks focused

on some sort of emotional processing, it is likely that heterogeneity in the specific tasks contributed to differences in the pattern of results across studies. Future longitudinal work with a range of emotional processing tasks will be needed to establish the developmental trajectory of amygdala-mPFC connectivity to determine whether it is a robust metric of development.

Associations Between ELA and Multiple Domains of Biological Aging

Given the range in operationalizing accelerated development and potential mechanisms linking ELA and accelerated biological development, it is surprising that few have attempted to reconcile across these different metrics of maturation. Only a handful of studies to our knowledge have incorporated multiple metrics of accelerated development in adolescence. J. Belsky and Shalev (2016) put forth a “two-hit” model suggesting that ELA accelerates development first through telomere erosion and second, through earlier reproduction, which can increase oxidative stress and accelerate telomere erosion. Although this model accounts for two forms of accelerated aging, it does not directly compare and contrast the effects of ELA on both metrics of accelerated development—cellular aging and pubertal timing. Sumner, Colich, Uddin, Armstrong, and McLaughlin (2019) examined how exposure to threat and deprivation-related ELA were associated with both DNAm age and pubertal timing. They found that exposure to threat, but not deprivation, was associated with both accelerated epigenetic aging and accelerated pubertal timing. There is also evidence to suggest that pubertal timing and cellular aging are highly correlated (Binder et al., 2018; Sumner et al., 2019), suggesting a potential shared mechanism contributing to the development of both domains. However, other work demonstrates variation in the rate of change across different metrics of biological aging in adults (D. W. Belsky, Caspi, et al., 2015), indicating that multiple mechanisms might underlie the ELA-accelerated development association, depending upon the metric of accelerated development and point in the life-course when aging is measured. Although increased allostatic load has been proposed as a mechanism linking ELA to accelerated pubertal timing (Danese & McEwen, 2012; McEwen, 1998), empirical evidence testing this possibility is currently lacking. Moreover, allostatic load is a multidimensional construct involving numerous biological systems, and it is unclear if accelerated weathering occurs across all systems to a similar degree (Geronimus, 1992; Geronimus, Hicken, Keene, & Bound, 2006). If allostatic load is a mechanism contributing to accelerated pubertal development, it could explain our disparate findings regarding threat and deprivation as exposure to early life trauma has been consistently associated with elevated allostatic load (Danese & McEwen, 2012; Scheuer et al., 2018; Widom, Horan, & Brzustowicz, 2015), whereas recent work indicates that even extreme exposure to deprivation association with institutional rearing is unrelated to allostatic load (Slopen et al., 2019). It is clear that greater work is needed to elucidate the mechanisms underlying accelerated development following exposure to ELA across domains, whether they are global or specific to particular dimensions of early experience, and how these mechanisms ultimately contribute to changes in reproductive function, cellular aging, and brain development. Similarly, longitudinal studies that can explore the time course of the associations of ELA

with accelerated biological aging is necessary to further understand the mechanisms linking ELA and accelerated aging across multiple systems.

Implications of Accelerated Development

Accelerated aging across domains has been associated with a host of mental and physical health problems. For instance, accelerated pubertal timing is linked with a range of mental health problems including heightened levels of risk-taking behavior, delinquency, and substance abuse problems (Copeland et al., 2013; Harden & Mendle, 2012), as well as depression and anxiety disorders (Colich et al., 2020; Hamilton, Hamlat, Stange, Abramson, & Alloy, 2014; Mendle, Harden, Brooks-Gunn, & Graber, 2010; Mendle et al., 2014; Negriff & Susman, 2011; Platt, Colich, McLaughlin, Gary, & Keyes, 2017; Ullsperger & Nikolas, 2017). Accelerated pubertal timing is also associated with a range of physical health problems, including cardiovascular disease, polycystic ovarian syndrome in females, and testicular cancer in males (Day, Elks, Murray, Ong, & Perry, 2015; Golub et al., 2008; Lakshman et al., 2009; Velie, Nechuta, & Osuch, 2006). Accelerated cellular aging has also been associated with depression (Ridout, Ridout, Price, Sen, & Tyrka, 2016), anxiety (Malouff & Schutte, 2017), posttraumatic stress disorder (Li, Wang, Zhou, Huang, & Li, 2017), cardiovascular disease (Rehkopf et al., 2016), cancer (Zhu et al., 2016), and all-cause mortality (Needham, Rehkopf, et al., 2015). Finally, altered trajectories of cortical development have been linked to attention-deficit/hyperactivity disorder (McLaughlin, Sheridan, Winter, et al., 2014) and both internalizing and externalizing psychopathology (Busso, McLaughlin, Brueck, et al., 2017; Gold et al., 2016). Little research has directly examined whether accelerated development in these systems is a consequence of preexisting mental and physical disorders, or a mechanism explaining elevated risk for mental and physical health problems in youth who have experienced ELA (see J. Belsky et al., 2015; Colich et al., 2020; Mendle et al., 2014; Negriff, Saxbe, et al., 2015 for work that has explored this idea). For instance, some evidence suggests that accelerated pubertal timing explains a significant proportion of the association between threat-related ELA risk for mental health problems in adolescence (Colich et al., 2020), and that telomere shortening occurs prior to the onset of depression in an at-risk population (Gotlib et al., 2015). However, other evidence suggests that early psychosocial difficulties precede early pubertal onset (Mensah et al., 2013) and could potentially accelerate cellular aging as well (Lindqvist et al., 2015). A key issue for future research will be to determine whether early interventions targeting psychosocial mechanisms linking ELA with mental and physical health problems are capable of altering observed patterns of accelerated biological aging.

It is also important to acknowledge that although there are strong associations among accelerated development and negative mental and physical health outcomes, accelerated development is most likely an adaptation to current and presumably future environmental conditions (J. Belsky, 2019). In a highly dangerous or unpredictable environment, it may be adaptive in the short-term to reach adult-like capabilities at an earlier age, in order to either reach reproductive status earlier, or reach independence from the caregiving situation at an earlier age. This immediate goal may outweigh the longer-term consequences of mental and physical

health problems. If the environment is signaling imminent mortality, then this trade-off is one that is evolutionarily adaptive. It will be important that future work consider the adaptive significance of accelerated development in response to ELA.

Limitations and Future Directions

Several limitations of this work highlight key directions for future research. First, we examined a relatively small number of studies for some domains and within each dimension of adversity, particularly with regard to cellular aging and brain development. More research is needed to evaluate whether all forms of adversity influence cellular aging or whether these associations are stronger for experiences of threat. Similarly, due to the small number of studies published on these variables, we collapsed across measures of cellular aging, including telomere length and DNAm age. Although we ran sensitivity analyses to ensure that the effect was similar if only exploring studies examining telomere length and when using metric of cellular aging as a moderator, we could not conduct the same analyses for DNAm age due to the small number of studies published ($k = 3$). These markers reflect distinct biological processes with different molecular signatures, and we recognize that combining across these two metrics of cellular aging is most likely an oversimplification of the effects of ELA on cellular aging. These findings should be replicated when more studies have been published on the associations of ELA with both telomere length and DNAm age. We also collapsed across cellular aging metrics derived from saliva, buccal swabs, and blood. Although our moderator analysis revealed no moderation by cell type, it is likely that gene expression, DNA methylation patterns, and rates of telomere erosion differ across cell types. Once more studies have been published in this area, future work should conduct a meta-analysis for each cell type separately. Similarly, it is important to note that we did not include studies examining the effects of ELA on methylation patterns of single genes due to difficulties in understanding what typical developmental patterns of specific gene methylation would be. For a systematic review of the effects of ELA on gene-specific methylation patterns see Lang et al. (2019). Second, although we show associations among ELA, pubertal timing, cellular aging, and cortical thinning, we do not have the data to speak to the underlying mechanisms driving these associations. Although we speculate that accelerated biological development following ELA is most likely due to the effects of ELA on HPA-HPG axes interactions and allostatic load, future experimental work should investigate the underlying biological mechanisms supporting these associations.

Along these lines, we cannot rule out the effects of genetic heritability confounding our results. It is plausible that individuals who experience accelerated maturation may reproduce earlier, create a less stable family environment, and in turn put offspring at risk for higher exposure to ELA. Future studies examining the association of ELA and biological aging should consider the role of genetics in their approach. It is also important to note that our meta-analysis examines average effects of adversity on biological aging. It is likely that some children are more susceptible than others to the effects of trauma on biological aging (Ellis, Boyce, Belsky, Bakermans-Kranenburg, & Van Ijzendoorn, 2011). This may explain some heterogeneity across effect sizes, and future work should examine factors that confer risk or resilience to

biological aging following ELA. Additionally, given strong links among ELA, accelerated development and psychopathology, it is impossible to confidently conclude that psychopathology is not driving the effects of ELA on accelerated biological development. Future longitudinal work using at-risk samples should address the directionality of these associations to determine with confidence the direct effect of ELA on accelerated biological aging.

Finally, although we explored multiple metrics of biological aging in this meta-analysis and systematic review, recent work highlights interesting future directions for the field to explore. Specifically, developments in neuroimaging analyses have led to algorithms that use whole-brain structural neuroimaging data (both gray matter and white matter) to accurately estimate deviations between brain maturation and chronological age, known as brain age metrics (Franke & Gaser, 2019; Franke, Ziegler, Klöppel, & Gaser, 2010). This metric has been associated with the onset of mental disorders and age of mortality (Cole et al., 2019; Cole et al., 2018), and has been validated for use in children and adolescents (Franke, Luders, May, Wilke, & Gaser, 2012), supporting its utility as a biomarker of biological aging across development. A recent study suggested that both trauma exposure and growing up in a low-SES neighborhood was associated with more advanced brain age relative to chronological age (Gur et al., 2019). Future studies should explore how this relatively novel metric of biological aging relates to established metrics of biological aging (including pubertal timing and metrics of cellular aging), and how exposure to different dimensions of ELA relates to deviations in brain age metrics across development.

Conclusions

Through meta-analysis and systematic review, we find support for the idea that ELA is associated with accelerated biological aging, as measured by pubertal timing, cellular aging, and cortical thinning in childhood and adolescence. However, these associations varied systematically as a function of adversity type. Specifically ELA characterized by threat was associated with accelerated pubertal development and accelerated cellular aging as measured by both leukocyte telomere length and DNA methylation age, but exposure to deprivation and low-SES were not, suggesting specificity in the association of certain forms of ELA with pubertal timing and cellular aging. ELA was consistently associated with accelerated cortical thinning, with threat-related ELA associated with ventromedial PFC thinning and deprivation and SES more consistently associated with thinning in the frontoparietal, default mode, and visual networks. We found inconsistent associations of ELA with amygdala-mPFC functional connectivity. These findings suggest specific associations of dimensions of ELA with multiple domains of biological aging and highlight the importance of delineating the mechanisms through which specific types of early environmental experiences influence different aspects of biological aging in childhood and adolescence and determining how these pathways ultimately contribute to health disparities.

References

- Acacio-Claro, P. J., Koivusilta, L. K., Doku, D. T., & Rimpelä, A. H. (2019). Timing of puberty and reserve capacity in adolescence as pathways to educational level in adulthood – A longitudinal study. *Annals of Human Biology, 46*, 35–45.

- Amir, D., Jordan, M. R., & Bribescas, R. G. (2016). A longitudinal assessment of associations between adolescent environment, adversity perception, and economic status on fertility and age of menarche. *PLoS ONE*, *11*, e0155883.
- Arim, R. G., Shapka, J. D., Dahinten, V. S., & Willms, J. D. (2007). Patterns and correlates of pubertal development in Canadian youth. *Canadian Journal of Public Health*, *98*, 91–96. <http://dx.doi.org/10.1007/BF03404316>
- Asok, A., Bernard, K., Roth, T. L., Rosen, J. B., & Dozier, M. (2013). Parental responsiveness moderates the association between early-life stress and reduced telomere length. *Development and Psychopathology*, *25*, 577–585. <http://dx.doi.org/10.1017/S0954579413000011>
- Assink, M., & Wibbelink, C. J. M. (2016). Fitting three-level meta-analytic models in R: A step-by-step tutorial. *The Quantitative Methods for Psychology*, *12*, 154–174. <http://dx.doi.org/10.20982/tqmp.12.3.p154>
- Avants, B. B., Hackman, D. A., Betancourt, L. M., Lawson, G. M., Hurt, H., & Farah, M. J. (2015). Relation of childhood home environment to cortical thickness in late adolescence: Specificity of experience and timing. *PLoS ONE*, *10*, e0138217. <http://dx.doi.org/10.1371/journal.pone.0138217>
- Aviv, A., Hunt, S. C., Lin, J., Cao, X., Kimura, M., & Blackburn, E. (2011). Impartial comparative analysis of measurement of leukocyte telomere length/DNA content by Southern blots and qPCR. *Nucleic Acids Research*, *39*, e134. <http://dx.doi.org/10.1093/nar/gkr634>
- Baldwin, J. R., Reuben, A., Newbury, J. B., & Danese, A. (2019). Agreement between prospective and retrospective measures of childhood maltreatment: A systematic review and meta-analysis. *Journal of the American Medical Association Psychiatry*, *76*, 584–593. <http://dx.doi.org/10.1001/jamapsychiatry.2019.0097>
- Barbaro, N., Boutwell, B. B., Barnes, J. C., & Shackelford, T. K. (2017). Genetic confounding of the relationship between father absence and age at menarche. *Evolution and Human Behavior*, *38*, 357–365. <http://dx.doi.org/10.1016/j.evolhumbehav.2016.11.007>
- Barbas, H., & García-Cabezas, M. Á. (2016). How the prefrontal executive got its stripes. *Current Opinion in Neurobiology*, *40*, 125–134. <http://dx.doi.org/10.1016/j.conb.2016.07.003>
- Barker, D. J. P. (2007). The origins of the developmental origins theory. *Journal of Internal Medicine*, *261*, 412–417. <http://dx.doi.org/10.1111/j.1365-2796.2007.01809.x>
- Begg, C. B., & Mazumdar, M. (1994). Operating characteristics of a rank correlation test for publication bias. *Biometrics*, *50*, 1088–1101. <http://dx.doi.org/10.2307/2533446>
- Belsky, D. W., Caspi, A., Cohen, H. J., Kraus, W. E., Ramrakha, S., Poulton, R., & Moffitt, T. E. (2017). Impact of early personal-history characteristics on the pace of aging: Implications for clinical trials of therapies to slow aging and extend healthspan. *Aging Cell*, *16*, 644–651. <http://dx.doi.org/10.1111/acel.12591>
- Belsky, D. W., Caspi, A., Houts, R., Cohen, H. J., Corcoran, D. L., Danese, A., . . . Moffitt, T. E. (2015). Quantification of biological aging in young adults. *Proceedings of the National Academy of Sciences of the United States of America*, *112*, E4104–E4110. <http://dx.doi.org/10.1073/pnas.1506264112>
- Belsky, D. W., Moffitt, T. E., Cohen, A. A., Corcoran, D. L., Levine, M. E., Prinz, J. A., . . . Caspi, A. (2018). Eleven telomere, epigenetic clock, and biomarker-composite quantifications of biological aging: Do they measure the same thing? *American Journal of Epidemiology*, *187*, 1220–1230.
- Belsky, J. (2012). An evolutionary perspective on child development in the context of war and political violence. *The Oxford handbook of evolutionary perspectives on violence, homicide, and war*. New York, NY: Oxford University Press.
- Belsky, J. (2019). Early-life adversity accelerates child and adolescent development. *Current Directions in Psychological Science*, *28*, 241–246. <http://dx.doi.org/10.1177/0963721419837670>
- Belsky, J., Ruttle, P. L., Boyce, W. T., Armstrong, J. M., & Essex, M. J. (2015). Early adversity, elevated stress physiology, accelerated sexual maturation, and poor health in females. *Developmental Psychology*, *51*, 816–822.
- Belsky, J., Schlomer, G. L., & Ellis, B. J. (2012). Beyond cumulative risk: Distinguishing harshness and unpredictability as determinants of parenting and early life history strategy. *Developmental Psychology*, *48*, 662–673. <http://dx.doi.org/10.1037/a0024454>
- Belsky, J., & Shalev, I. (2016). Contextual adversity, telomere erosion, pubertal development, and health: Two models of accelerated aging, or one? *Development and Psychopathology*, *28*, 1367–1383. <http://dx.doi.org/10.1017/S0954579416000900>
- Belsky, J., Steinberg, L., & Draper, P. (1991). Childhood experience, interpersonal development, and reproductive strategy: An evolutionary theory of socialization. *Child Development*, *62*, 647–670. <http://dx.doi.org/10.2307/1131166>
- Binder, A. M., Corvalan, C., Mericq, V., Pereira, A., Santos, J. L., Horvath, S., . . . Michels, K. B. (2018). Faster ticking rate of the epigenetic clock is associated with faster pubertal development in girls. *Epigenetics*, *13*, 85–94. <http://dx.doi.org/10.1080/15592294.2017.1414127>
- Biro, F. M., Galvez, M. P., Greenspan, L. C., Succop, P. A., Vangeepuram, N., Pinney, S. M., . . . Wolff, M. S. (2010). Pubertal assessment method and baseline characteristics in a mixed longitudinal study of girls. *Pediatrics*, *126*, e583–e590. <http://dx.doi.org/10.1542/peds.2009-3079>
- Blell, M., Pollard, T. M., & Pearce, M. S. (2008). Predictors of age at Menarche in the Newcastle Thousand Families STUDY. *Journal of Biosocial Science*, *40*, 563–575.
- Blokland, G. A. M., de Zubicaray, G. I., McMahon, K. L., & Wright, M. J. (2012). Genetic and environmental influences on neuroimaging phenotypes: A meta-analytical perspective on twin imaging studies. *Twin Research and Human Genetics*, *15*, 351–371. <http://dx.doi.org/10.1017/thg.2012.11>
- Bootsman, F., Brouwer, R. M., Schnack, H. G., van Baal, G. C. M., van der Schot, A. C., Vonk, R., . . . van Haren, N. E. M. (2015). Genetic and environmental influences on cortical surface area and cortical thickness in bipolar disorder. *Psychological Medicine*, *45*, 193–204. <http://dx.doi.org/10.1017/S0033291714001251>
- Borenstein, M., Hedges, L. V., Higgins, J. P. T., & Rothstein, H. R. (2009). *Introduction to meta-analysis*. London, UK: Wiley. <http://dx.doi.org/10.1002/9780470743386>
- Boynton-Jarrett, R., & Harville, E. W. (2012). A prospective study of childhood social hardships and age at menarche. *Annals of Epidemiology*, *22*, 731–737. <http://dx.doi.org/10.1016/j.annepidem.2012.08.005>
- Boynton-Jarrett, R., Ryan, L. M., Berkman, L. F., & Wright, R. J. (2008). Cumulative violence exposure and self-rated health: Longitudinal study of adolescents in the United States. *Pediatrics*, *122*, 961–970. <http://dx.doi.org/10.1542/peds.2007-3063>
- Bradley, R. H., Conyn, R. F., Burchinal, M., McAdoo, H. P., & Garcia Coll, C. (2001). The home environments of children in the United States part II: Relations with behavioral development through age thirteen. *Child Development*, *72*, 1868–1886. <http://dx.doi.org/10.1111/1467-8624.t01-1-00383>
- Braithwaite, D., Moore, D. H., Lustig, R. H., Epel, E. S., Ong, K. K., Rehkopf, D. H., . . . Hiatt, R. A. (2009). Socioeconomic status in relation to early menarche among black and white girls. *Cancer Causes & Control*, *20*, 713–720. <http://dx.doi.org/10.1007/s10552-008-9284-9>
- Brody, G. H., Yu, T., & Shalev, I. (2017). Risky family processes prospectively forecast shorter telomere length mediated through negative emotions. *Health Psychology*, *36*, 438–444. <http://dx.doi.org/10.1037/hea0000443>
- Brown, D. W., Anda, R. F., Tiemeier, H., Felitti, V. J., Edwards, V. J., Croft, J. B., & Giles, W. H. (2009). Adverse childhood experiences and the risk of premature mortality. *American Journal of Preventive Medicine*, *37*, 389–396. <http://dx.doi.org/10.1016/j.amepre.2009.06.021>

- Busso, D. S., McLaughlin, K. A., Brueck, S., Peverill, M., Gold, A. L., & Sheridan, M. A. (2017). Child abuse, neural structure, and adolescent psychopathology: A longitudinal study. *Journal of the American Academy of Child & Adolescent Psychiatry, 56*, 321–328.e1. <http://dx.doi.org/10.1016/j.jaac.2017.01.013>
- Busso, D. S., McLaughlin, K. A., & Sheridan, M. A. (2017). Dimensions of adversity, physiological reactivity, and externalizing psychopathology in adolescence: Deprivation and threat. *Psychosomatic Medicine, 79*, 162–171.
- Callaghan, B. L., & Tottenham, N. (2016). The stress acceleration hypothesis: Effects of early-life adversity on emotion circuits and behavior. *Current Opinion in Behavioral Sciences, 7*, 76–81. <http://dx.doi.org/10.1016/j.cobeha.2015.11.018>
- Carpenter, L. L., Shattuck, T. T., Tyrka, A. R., Geraciotti, T. D., & Price, L. H. (2011). Effect of childhood physical abuse on cortisol stress response. *Psychopharmacology, 214*, 367–375. <http://dx.doi.org/10.1007/s00213-010-2007-4>
- Carskadon, M. A., & Acebo, C. (1993). A self-administered rating scale for pubertal development. *The Journal of Adolescent Health, 14*, 190–195. [http://dx.doi.org/10.1016/1054-139X\(93\)90004-9](http://dx.doi.org/10.1016/1054-139X(93)90004-9)
- Chan, S. R. W. L., & Blackburn, E. H. (2004). Telomeres and telomerase. *Philosophical Transactions of the Royal Society of London Series B, Biological Sciences, 359*, 109–121. <http://dx.doi.org/10.1098/rstb.2003.1370>
- Chen, B. H., Marioni, R. E., Colicino, E., Peters, M. J., Ward-Caviness, C. K., Tsai, P.-C., . . . Horvath, S. (2016). DNA methylation-based measures of biological age: Meta-analysis predicting time to death. *Aging, 8*, 1844–1865. <http://dx.doi.org/10.18632/aging.101020>
- Chen, E., Turiano, N. A., Mroczek, D. K., & Miller, G. E. (2016). Association of reports of childhood abuse and all-cause mortality rates in women. *Journal of the American Medical Association Psychiatry, 73*, 920–927. <http://dx.doi.org/10.1001/jamapsychiatry.2016.1786>
- Cisler, J. M., James, G. A., Tripathi, S., Mletzko, T., Heim, C., Hu, X. P., . . . Kilts, C. D. (2013). Differential functional connectivity within an emotion regulation neural network among individuals resilient and susceptible to the depressogenic effects of early life stress. *Psychological Medicine, 43*, 507–518. <http://dx.doi.org/10.1017/S0033291712001390>
- Cisler, J. M., Scott, S. J., Smitherman, S., Lenow, J. K., & Kilts, C. D. (2013). Neural processing correlates of assaultive violence exposure and PTSD symptoms during implicit threat processing: A network-level analysis among adolescent girls. *Psychiatry Research: Neuroimaging, 214*, 238–246. <http://dx.doi.org/10.1016/j.psychres.2013.06.003>
- Cochran, W. G. (1954). Some methods for strengthening the common χ^2 tests. *Biometrics, 10*, 417–451. <http://dx.doi.org/10.2307/3001616>
- Cohen, J. (1988). *Statistical power analysis for the behavioral sciences*. New York, NY: Routledge Academic.
- Coimbra, B. M., Carvalho, C. M., Moretti, P. N., Mello, M. F., & Belangero, S. I. (2017). Stress-related telomere length in children: A systematic review. *Journal of Psychiatric Research, 92*, 47–54. <http://dx.doi.org/10.1016/j.jpsychires.2017.03.023>
- Cole, J. H., Marioni, R. E., Harris, S. E., & Deary, I. J. (2019). Brain age and other bodily ‘ages’: Implications for neuropsychiatry. *Molecular Psychiatry, 24*, 266–281. <http://dx.doi.org/10.1038/s41380-018-0098-1>
- Cole, J. H., Ritchie, S. J., Bastin, M. E., Valdés Hernández, M. C., Muñoz Maniega, S., Royle, N., . . . Deary, I. J. (2018). Brain age predicts mortality. *Molecular Psychiatry, 23*, 1385–1392. <http://dx.doi.org/10.1038/mp.2017.62>
- Cole, M. W., & Schneider, W. (2007). The cognitive control network: Integrated cortical regions with dissociable functions. *NeuroImage, 37*, 343–360. <http://dx.doi.org/10.1016/j.neuroimage.2007.03.071>
- Coleman, L., & Coleman, J. (2002). The measurement of puberty: A review. *Journal of Adolescence, 25*, 535–550. <http://dx.doi.org/10.1006/jado.2002.0494>
- Colich, N. L., Platt, J. M., Keyes, K. M., Sumner, J. A., Allen, N. B., & McLaughlin, K. A. (2020). Earlier age at menarche as a transdiagnostic mechanism linking childhood trauma with multiple forms of psychopathology in adolescent girls. *Psychological Medicine, 50*, 1090–1098.
- Colich, N. L., Williams, E. S., Ho, T. C., King, L. S., Humphreys, K. L., Price, A. N., . . . Gotlib, I. H. (2017). The association between early life stress and prefrontal cortex activation during implicit emotion regulation is moderated by sex in early adolescence. *Development and Psychopathology, 29*, 1851–1864. <http://dx.doi.org/10.1017/S0954579417001444>
- Cooper, R., Blell, M., Hardy, R., Black, S., Pollard, T. M., Wadsworth, M. E. J., . . . Kuh, D. (2006). Validity of age at menarche self-reported in adulthood. *Journal of Epidemiology and Community Health, 60*, 993–997. <http://dx.doi.org/10.1136/jech.2005.043182>
- Copeland, W. E., Adair, C. E., Smetanin, P., Stiff, D., Briante, C., Colman, I., . . . Angold, A. (2013). Diagnostic transitions from childhood to adolescence to early adulthood. *Journal of Child Psychology and Psychiatry, 54*, 791–799. <http://dx.doi.org/10.1111/jcpp.12062>
- Corbetta, M., Kincade, J. M., & Shulman, G. L. (2002). Neural systems for visual orienting and their relationships to spatial working memory. *Journal of Cognitive Neuroscience, 14*, 508–523. <http://dx.doi.org/10.1162/089892902317362029>
- Cousminer, D. L., Widén, E., & Palmert, M. R. (2016). The genetics of pubertal timing in the general population: Recent advances and evidence for sex-specificity. *Current Opinion in Endocrinology, Diabetes, and Obesity, 23*, 57–65. <http://dx.doi.org/10.1097/MED.0000000000000213>
- Culpin, I., Heron, J., Araya, R., Melotti, R., Lewis, G., & Joinson, C. (2014). Father absence and timing of menarche in adolescent girls from a UK cohort: The mediating role of maternal depression and major financial problems. *Journal of Adolescence, 37*, 291–301. <http://dx.doi.org/10.1016/j.adolescence.2014.02.003>
- Danese, A., & McEwen, B. S. (2012). Adverse childhood experiences, allostatic load, and age-related disease. *Physiology & Behavior, 106*, 29–39. <http://dx.doi.org/10.1016/j.physbeh.2011.08.019>
- Davis, E. G., Humphreys, K. L., McEwen, L. M., Sacchet, M. D., Camacho, M. C., MacIsaac, J. L., . . . Gotlib, I. H. (2017). Accelerated DNA methylation age in adolescent girls: Associations with elevated diurnal cortisol and reduced hippocampal volume. *Translational Psychiatry, 7*, 1–5. <http://dx.doi.org/10.1038/tp.2017.188>
- Day, F. R., Elks, C. E., Murray, A., Ong, K. K., & Perry, J. R. B. (2015). Puberty timing associated with diabetes, cardiovascular disease and also diverse health outcomes in men and women: The U. K. Biobank study. *Scientific Reports, 5*, 1–12. <http://dx.doi.org/10.1038/srep11208>
- Deardorff, J., Abrams, B., Ekwaru, J. P., & Rehkopf, D. H. (2014). Socioeconomic status and age at menarche: An examination of multiple indicators in an ethnically diverse cohort. *Annals of Epidemiology, 24*, 727–733. <http://dx.doi.org/10.1016/j.annepidem.2014.07.002>
- Deardorff, J., Ekwaru, J. P., Kushi, L. H., Ellis, B. J., Greenspan, L. C., Mirabedi, A., . . . Hiatt, R. A. (2011). Father absence, body mass index, and pubertal timing in girls: Differential effects by family income and ethnicity. *Journal of Adolescent Health, 48*, 441–447. <http://dx.doi.org/10.1016/j.jadohealth.2010.07.032>
- Deardorff, J., Fyfe, M., Ekwaru, J. P., Kushi, L. H., Greenspan, L. C., & Yen, I. H. (2012). Does neighborhood environment influence girls’ pubertal onset? Findings from a cohort study. *BMC Pediatrics, 12*, 27. <http://dx.doi.org/10.1186/1471-2431-12-27>
- Del Giudice, M., Gangestad, S. W., & Kaplan, H. S. (2016). Life history theory and evolutionary psychology. In D. M. Buss (Ed.), *The handbook of evolutionary psychology, Vol. 1: Foundations* (pp. 88–114). Hoboken, NJ: Wiley.
- Dennis, M., Francis, D. J., Cirino, P. T., Schachar, R., Barnes, M. A., & Fletcher, J. M. J. M. (2009). Why IQ is not a covariate in cognitive studies of neurodevelopmental disorders. *Journal of the International Neuropsychological Society, 15*, 331–343. <http://dx.doi.org/10.1017/S1355617709090481>

- Dennison, M. J., Rosen, M. L., Sambrook, K. A., Jenness, J. L., Sheridan, M. A., & McLaughlin, K. A. (2019). Differential associations of distinct forms of childhood adversity with neurobehavioral measures of reward processing: A developmental pathway to depression. *Child Development, 90*, e96–e113. <http://dx.doi.org/10.1111/cdev.13011>
- de Vries, L., Kauschansky, A., Shohat, M., & Phillip, M. (2004). Familial central precocious puberty suggests autosomal dominant inheritance. *The Journal of Clinical Endocrinology and Metabolism, 89*, 1794–1800. <http://dx.doi.org/10.1210/jc.2003-030361>
- DiCarlo, J. J., Zoccolan, D., & Rust, N. C. (2012). How does the brain solve visual object recognition? *Neuron, 73*, 415–434. <http://dx.doi.org/10.1016/j.neuron.2012.01.010>
- Dickerson, B. C., Fenstermacher, E., Salat, D. H., Wolk, D. A., Maguire, R. P., Desikan, R., . . . Fischl, B. (2008). Detection of cortical thickness correlates of cognitive performance: Reliability across MRI scan sessions, scanners, and field strengths. *NeuroImage, 39*, 10–18. <http://dx.doi.org/10.1016/j.neuroimage.2007.08.042>
- Dixon, M. L., Thiruchselvam, R., Todd, R., & Christoff, K. (2017). Emotion and the prefrontal cortex: An integrative review. *Psychological Bulletin, 143*, 1033–1081. <http://dx.doi.org/10.1037/bul0000096>
- Dong, M., Giles, W. H., Felitti, V. J., Dube, S. R., Williams, J. E., Chapman, D. P., & Anda, R. F. (2004). Insights into causal pathways for ischemic heart disease: Adverse childhood experiences study. *Circulation, 110*, 1761–1766. <http://dx.doi.org/10.1161/01.CIR.0000143074.54995.7F>
- Dorn, L. D., & Biro, F. M. (2011). Puberty and Its Measurement: A Decade in Review. *Journal of Research on Adolescence, 21*, 180–195. <http://dx.doi.org/10.1111/j.1532-7795.2010.00722.x>
- Dorn, L. D., Sontag-Padilla, L. M., Pabst, S., Tissot, A., & Susman, E. J. (2013). Longitudinal reliability of self-reported age at menarche in adolescent girls: Variability across time and setting. *Developmental Psychology, 49*, 1187–1193. <http://dx.doi.org/10.1037/a0029424>
- Drury, S. S., Mabile, E., Brett, Z. H., Esteves, K., Jones, E., Shirtcliff, E. A., & Theall, K. P. (2014). The association of telomere length with family violence and disruption. *Pediatrics, 134*, e128–e137. <http://dx.doi.org/10.1542/peds.2013-3415>
- Drury, S. S., Theall, K., Gleason, M. M., Smyke, A. T., De Vivo, I., Wong, J. Y. Y., . . . Nelson, C. A. (2012). Telomere length and early severe social deprivation: Linking early adversity and cellular aging. *Molecular Psychiatry, 17*, 719–727. <http://dx.doi.org/10.1038/mp.2011.53>
- Ducharme, S., Albaugh, M. D., Nguyen, T.-V., Hudziak, J. J., Mateos-Pérez, J. M., Labbe, A., . . . Karama, S. (2016). Trajectories of cortical thickness maturation in normal brain development—The importance of quality control procedures. *NeuroImage, 125*, 267–279. <http://dx.doi.org/10.1016/j.neuroimage.2015.10.010>
- Duncan, G. J., & Magnuson, K. (2012). Socioeconomic status and cognitive functioning: Moving from correlation to causation. *Wiley Interdisciplinary Reviews: Cognitive Science, 3*, 377–386. <http://dx.doi.org/10.1002/wcs.1176>
- Edmiston, E. E., Wang, F., Mazure, C. M., Guiney, J., Sinha, R., Mayes, L. C., & Blumberg, H. P. (2011). Corticostriatal-limbic gray matter morphology in adolescents with self-reported exposure to childhood maltreatment. *Archives of Pediatrics & Adolescent Medicine, 165*, 1069–1077. <http://dx.doi.org/10.1001/archpediatrics.2011.565>
- Egger, M., Davey Smith, G., Schneider, M., & Minder, C. (1997). Bias in meta-analysis detected by a simple, graphical test. *British Medical Journal, 315*, 629–634. <http://dx.doi.org/10.1136/bmj.315.7109.629>
- Elbers, C. C., Garcia, M. E., Kimura, M., Cummings, S. R., Nalls, M. A., Newman, A. B., . . . Aviv, A. (2014). Comparison between southern blots and qPCR analysis of leukocyte telomere length in the health ABC study. *Journals of Gerontology, 69 A*, 527–531. <http://dx.doi.org/10.1093/gerona/glt121>
- Ellis, B. J., Boyce, W. T., Belsky, J., Bakermans-Kranenburg, M. J., & van Ijzendoorn, M. H. (2011). Differential susceptibility to the environment: An evolutionary—neurodevelopmental theory. *Development and Psychopathology, 23*, 7–28. <http://dx.doi.org/10.1017/S0954579410000611>
- Ellis, B. J., & Essex, M. J. (2007). Family environments, adrenarche, and sexual maturation: A longitudinal test of a life history model. *Child Development, 78*, 1799–1817. <http://dx.doi.org/10.1111/j.1467-8624.2007.01092.x>
- Ellis, B. J., Figueredo, A. J., Brumbach, B. H., & Schlomer, G. L. (2009). Fundamental dimensions of environmental risk: The impact of harsh versus unpredictable environments on the evolution and development of life history strategies. *Human Nature, 20*, 204–268. <http://dx.doi.org/10.1007/s12110-009-9063-7>
- Ellis, B. J., & Garber, J. (2000). Psychosocial antecedents of variation in girls' pubertal timing: Maternal depression, stepfather presence, and marital and family stress. *Child Development, 71*, 485–501. <http://dx.doi.org/10.1111/1467-8624.00159>
- Ellwood-Lowe, M. E., Sacchet, M. D., & Gotlib, I. H. (2016). The application of neuroimaging to social inequity and language disparity: A cautionary examination. *Developmental Cognitive Neuroscience, 22*, 1–8. <http://dx.doi.org/10.1016/j.dcn.2016.10.001>
- Epel, E. S., Blackburn, E. H., Lin, J., Dhabhar, F. S., Adler, N. E., Morrow, J. D., & Cawthon, R. M. (2004). Accelerated telomere shortening in response to life stress. *Proceedings of the National Academy of Sciences of the United States of America, 101*, 17312–17315. <http://dx.doi.org/10.1073/pnas.0407162101>
- Essex, M. J., Boyce, W. T., Hertzman, C., Lam, L. L., Armstrong, J. M., Neumann, S. M. A., & Kobor, M. S. (2013). Epigenetic vestiges of early developmental adversity: Childhood stress exposure and DNA methylation in adolescence. *Child Development, 84*, 58–75. <http://dx.doi.org/10.1111/j.1467-8624.2011.01641.x>
- Evans, G. W., Li, D., & Whipple, S. S. (2013). Cumulative risk and child development. *Psychological Bulletin, 139*, 1342–1396. <http://dx.doi.org/10.1037/a0031808>
- Everaerd, D., Klumpers, F., Zwiers, M., Guadalupe, T., Franke, B., van Oostrom, I., . . . Tendolcar, I. (2016). Childhood abuse and deprivation are associated with distinct sex-dependent differences in brain morphology. *Neuropsychopharmacology, 41*, 1716–1723. <http://dx.doi.org/10.1038/npp.2015.344>
- Felitti, V. J., Anda, R. F., Nordenberg, D., Williamson, D. F., Spitz, A. M., Edwards, V., . . . Marks, J. S. (1998). Relationship of childhood abuse and household dysfunction to many of the leading causes of death in adults. The Adverse Childhood Experiences (ACE) Study. *American Journal of Preventive Medicine, 14*, 245–258. [http://dx.doi.org/10.1016/S0749-3797\(98\)00017-8](http://dx.doi.org/10.1016/S0749-3797(98)00017-8)
- Foster, H., Brooks-Gunn, J., & Martin, A. (2007). Poverty/socioeconomic status and exposure to violence in the lives of children and adolescents. In D. J. Flannery, A. T. Vazsonyi, & I. D. Waldman (Eds.), *The Cambridge handbook of violent behavior and aggression* (pp. 664–687). Cambridge, UK: Cambridge University Press. <http://dx.doi.org/10.1017/CBO9780511816840.036>
- Franke, K., & Gaser, C. (2019). Ten years of BrainAGE as a neuroimaging biomarker of brain aging: What insights have we gained? *Frontiers in Neurology, 10*, 1–26. <http://dx.doi.org/10.3389/fneur.2019.00789>
- Franke, K., Luders, E., May, A., Wilke, M., & Gaser, C. (2012). Brain maturation: Predicting individual BrainAGE in children and adolescents using structural MRI. *NeuroImage, 63*, 1305–1312. <http://dx.doi.org/10.1016/j.neuroimage.2012.08.001>
- Franke, K., Ziegler, G., Klöppel, S., & Gaser, C. (2010). Estimating the age of healthy subjects from T1-weighted MRI scans using kernel methods: Exploring the influence of various parameters. *NeuroImage, 50*, 883–892. <http://dx.doi.org/10.1016/j.neuroimage.2010.01.005>
- Frenck, R. W., Jr., Blackburn, E. H., & Shannon, K. M. (1998). The rate of telomere sequence loss in human leukocytes varies with age. *Proceedings of the National Academy of Sciences of the United States of America, 95*, 5607–5610. <http://dx.doi.org/10.1073/pnas.95.10.5607>

- Furu, M. (1976). Menarcheal age in Stockholm girls, 1967. *Annals of Human Biology*, 3, 587–590. <http://dx.doi.org/10.1080/03014467600001851>
- Gabard-Durnam, L. J., Flannery, J., Goff, B., Gee, D. G., Humphreys, K. L., Telzer, E., . . . Tottenham, N. (2014). The development of human amygdala functional connectivity at rest from 4 to 23 years: A cross-sectional study. *NeuroImage*, 95, 193–207. <http://dx.doi.org/10.1016/j.neuroimage.2014.03.038>
- Gassen, N. C., Chrousos, G. P., Binder, E. B., & Zannas, A. S. (2017). Life stress, glucocorticoid signaling, and the aging epigenome: Implications for aging-related diseases. *Neuroscience and Biobehavioral Reviews*, 74, 356–365. <http://dx.doi.org/10.1016/j.neubiorev.2016.06.003>
- Gaydos, L., Belsky, D. W., Domingue, B. W., Boardman, J. D., & Harris, K. M. (2018). Father absence and accelerated reproductive development in non-Hispanic White women in the United States. *Demography*, 55, 1245–1267. <http://dx.doi.org/10.1007/s13524-018-0696-1>
- Gee, D. G., Gabard-Durnam, L. J., Flannery, J., Goff, B., Humphreys, K. L., Telzer, E. H., . . . Tottenham, N. (2013). Early developmental emergence of human amygdala-prefrontal connectivity after maternal deprivation. *Proceedings of the National Academy of Sciences of the United States of America*, 110, 15638–15643. <http://dx.doi.org/10.1073/pnas.1307893110>
- Gee, D. G., Humphreys, K. L., Flannery, J., Goff, B., Telzer, E. H., Shapiro, M., . . . Tottenham, N. (2013). A developmental shift from positive to negative connectivity in human amygdala-prefrontal circuitry. *The Journal of Neuroscience*, 33, 4584–4593. <http://dx.doi.org/10.1523/JNEUROSCI.3446-12.2013>
- Gee, D. G., McEwen, S. C., Forsyth, J. K., Haut, K. M., Bearden, C. E., Addington, J., . . . Cannon, T. D. (2015). Reliability of an fMRI paradigm for emotional processing in a multisite longitudinal study. *Human Brain Mapping*, 36, 2558–2579. <http://dx.doi.org/10.1002/hbm.22791>
- Geronimus, A. T. (1992). The weathering hypothesis and the health of African-American women and infants: Evidence and speculations. *Ethnicity & Disease*, 2, 207–221. Retrieved from <http://www.ncbi.nlm.nih.gov/pubmed/1467758>
- Geronimus, A. T., Hicken, M., Keene, D., & Bound, J. (2006). “Weathering” and age patterns of allostatic load scores among blacks and whites in the United States. *American Journal of Public Health*, 96, 826–833. <http://dx.doi.org/10.2105/AJPH.2004.060749>
- Gershon, N. B., & High, P. C. (2015). Epigenetics and child abuse: Modern-day Darwinism—The miraculous ability of the human genome to adapt, and then adapt again. *American Journal of Medical Genetics Part C, Seminars in Medical Genetics*, 169, 353–360. <http://dx.doi.org/10.1002/ajmg.c.31467>
- Giedd, J. N., Blumenthal, J., Jeffries, N. O., Castellanos, F. X., Liu, H., Zijdenbos, A., . . . Rapoport, J. L. (1999). Brain development during childhood and adolescence: A longitudinal MRI study. *Nature Neuroscience*, 2, 861–863. <http://dx.doi.org/10.1038/13158>
- Gilger, J. W., Geary, D. C., & Eisele, L. M. (1991). Reliability and validity of retrospective self-reports of the age of pubertal onset using twin, sibling, and college student data. *Adolescence*, 26, 41–53.
- Gilkerson, J., Richards, J. A., Warren, S. F., Montgomery, J. K., Greenwood, C. R., Kimbrough Oller, D., . . . Paul, T. D. (2017). Mapping the early language environment using all-day recordings and automated analysis. *American Journal of Speech-Language Pathology*, 26, 248–265. http://dx.doi.org/10.1044/2016_AJSLP-15-0169
- Gold, A. L., Sheridan, M. A., Peeverill, M., Busso, D. S., Lambert, H. K., Alves, S., . . . McLaughlin, K. A. (2016). Childhood abuse and reduced cortical thickness in brain regions involved in emotional processing. *Journal of Child Psychology and Psychiatry and Allied Disciplines*, 57, 1154–1164. <http://dx.doi.org/10.1111/jcpp.12630>
- Golub, M. S., Collman, G. W., Foster, P. M. D., Kimmel, C. A., Rajpert-De Meys, E., Reiter, E. O., . . . Toppari, J. (2008). Public health implications of altered puberty timing. *Pediatrics*, 121, S218–S230. <http://dx.doi.org/10.1542/peds.2007-1813G>
- Gotlib, I. H., LeMoult, J., Colich, N. L., Foland-Ross, L. C., Hallmayer, J., Joormann, J., . . . Wolkowitz, O. M. (2015). Telomere length and cortisol reactivity in children of depressed mothers. *Molecular Psychiatry*, 20, 615–620. <http://dx.doi.org/10.1038/mp.2014.119>
- Graber, J. A., Brooks-Gunn, J., & Warren, M. P. (1995). The antecedents of menarcheal age: Heredity, family environment, and stressful life events. *Child Development*, 66, 346–359. <http://dx.doi.org/10.2307/1131582>
- Green, J. G., McLaughlin, K. A., Berglund, P. A., Gruber, M. J., Sampson, N. A., Zaslavsky, A. M., & Kessler, R. C. (2010). Childhood adversities and adult psychiatric disorders in the national comorbidity survey replication I: Associations with first onset of DSM-IV disorders. *Archives of General Psychiatry*, 67, 113–123. <http://dx.doi.org/10.1001/archgenpsyc.2009.186>
- Gur, R. E., Moore, T. M., Rosen, A. F. G., Barzilay, R., Roalf, D. R., Calkins, M. E., . . . Gur, R. C. R. E. (2019). Burden of environmental adversity associated with psychopathology, maturation, and brain behavior parameters in youths. *Journal of the American Medical Association Psychiatry*, 76, 966–975. <http://dx.doi.org/10.1001/jamapsychiatry.2019.0943>
- Hair, N. L., Hanson, J. L., Wolfe, B. L., & Pollak, S. D. (2015). Association of child poverty, brain development, and academic achievement. *Journal of the American Medical Association Pediatrics*, 169, 822–829. <http://dx.doi.org/10.1001/jamapediatrics.2015.1475>
- Halpern, C. T., Tucker, C. M., Bengtson, A., Kupper, L. L., McLean, S. A., & Martin, S. L. (2013). Somatic symptoms among U.S. adolescent females: Associations with sexual and physical violence exposure. *Maternal and Child Health Journal*, 17, 1951–1960. <http://dx.doi.org/10.1007/s10995-013-1221-1>
- Hamilton, J. L., Hamlat, E. J., Stange, J. P., Abramson, L. Y., & Alloy, L. B. (2014). Pubertal timing and vulnerabilities to depression in early adolescence: Differential pathways to depressive symptoms by sex. *Journal of Adolescence*, 37, 165–174. <http://dx.doi.org/10.1016/j.adolescence.2013.11.010>
- Han, X., Jovicich, J., Salat, D., van der Kouwe, A., Quinn, B., Czanner, S., . . . Fischl, B. (2006). Reliability of MRI-derived measurements of human cerebral cortical thickness: The effects of field strength, scanner upgrade and manufacturer. *NeuroImage*, 32, 180–194. <http://dx.doi.org/10.1016/j.neuroimage.2006.02.051>
- Hannum, G., Guinney, J., Zhao, L., Zhang, L., Hughes, G., Sada, S., . . . Zhang, K. (2013). Genome-wide methylation profiles reveal quantitative views of human aging rates. *Molecular Cell*, 49, 359–367. <http://dx.doi.org/10.1016/j.molcel.2012.10.016>
- Hanssen, L. M., Schutte, N. S., Malouff, J. M., & Epel, E. S. (2017). The relationship between childhood psychosocial stressor level and telomere length: A meta-analysis. *Health Psychology Research*, 5, 14–22. <http://dx.doi.org/10.4081/hpr.2017.6378>
- Harden, K. P. (2014). Genetic influences on adolescent sexual behavior: Why genes matter for environmentally oriented researchers. *Psychological Bulletin*, 140, 434–465. <http://dx.doi.org/10.1037/a0033564>
- Harden, K. P., & Mendle, J. (2012). Gene-environment interplay in the association between pubertal timing and delinquency in adolescent girls. *Journal of Abnormal Psychology*, 121, 73–87. <http://dx.doi.org/10.1037/a0024160>
- Hardt, J., & Rutter, M. (2004). Validity of adult retrospective reports of adverse childhood experiences: Review of the evidence. *Journal of Child Psychology and Psychiatry*, 45, 260–273. <http://dx.doi.org/10.1111/j.1469-7610.2004.00218.x>
- Harrer, M., Cuijpers, P., Furukawa, T., & Ebert, D. D. (2019). *dmeter: Companion R package for the guide 'doing meta-analysis in R*. Retrieved from <http://dmeter.protectlab.org>

- Hartman, S., Li, Z., Nettle, D., & Belsky, J. (2017). External-environmental and internal-health early life predictors of adolescent development. *Development and Psychopathology*, *29*, 1839–1849. <http://dx.doi.org/10.1017/S0954579417001432>
- Hayes, P., & Tan, T. X. (2016). Timing of menarche in girls adopted from China: A cohort study. *Child Care Health and Development*, *42*, 859–862. <http://dx.doi.org/10.1111/cch.12393>
- Heim, C., & Binder, E. B. (2012). Current research trends in early life stress and depression: Review of human studies on sensitive periods, gene-environment interactions, and epigenetics. *Experimental Neurology*, *233*, 102–111. <http://dx.doi.org/10.1016/j.expneurol.2011.10.032>
- Hein, T. C., & Monk, C. S. (2017). Research review: Neural response to threat in children, adolescents, and adults after child maltreatment—A quantitative meta-analysis. *Journal of Child Psychology and Psychiatry*, *58*, 222–230. <http://dx.doi.org/10.1111/jcpp.12651>
- Higgins, J. P. T., & Thompson, S. G. (2002). Quantifying heterogeneity in a meta-analysis. *Statistics in Medicine*, *21*, 1539–1558. <http://dx.doi.org/10.1002/sim.1186>
- Hill, K., & Kaplan, H. (1999). Life history traits in humans: Theory and empirical studies. *Annual Review of Anthropology*, *28*, 397–430. <http://dx.doi.org/10.1146/annurev.anthro.28.1.397>
- Hodel, A. S., Hunt, R. H., Cowell, R. A., Van Den Heuvel, S. E., Gunnar, M. R., & Thomas, K. M. (2015). Duration of early adversity and structural brain development in post-institutionalized adolescents. *NeuroImage*, *105*, 112–119. <http://dx.doi.org/10.1016/j.neuroimage.2014.10.020>
- Hoen, P. W., Rosmalen, J. G. M., Schoevers, R. A., Huzen, J., van der Harst, P., & de Jonge, P. (2013). Association between anxiety but not depressive disorders and leukocyte telomere length after 2 years of follow-up in a population-based sample. *Psychological Medicine*, *43*, 689–697. <http://dx.doi.org/10.1017/S0033291712001766>
- Horvath, S. (2013). DNA methylation age of human tissues and cell types. *Genome Biology*, *14*, 2–19. <http://dx.doi.org/10.1186/gb-2013-14-10-r115>
- Horvath, S., Erhart, W., Brosch, M., Ammerpohl, O., von Schonfels, W., Ahrens, M., . . . Hampe, J. (2014). Obesity accelerates epigenetic aging of human liver. *Proceedings of the National Academy of Sciences of the United States of America*, *111*, 15538–15543. <http://dx.doi.org/10.1073/pnas.1412759111>
- Horvath, S., & Raj, K. (2018). DNA methylation-based biomarkers and the epigenetic clock theory of ageing. *Nature Reviews Genetics*, *19*, 371–384. <http://dx.doi.org/10.1038/s41576-018-0004-3>
- Humphreys, K. L., Esteves, K., Zeanah, C. H., Fox, N. A., Nelson, C. A., & Drury, S. S. (2016). Accelerated telomere shortening: Tracking the lasting impact of early institutional care at the cellular level. *Psychiatry Research*, *246*, 95–100. <http://dx.doi.org/10.1016/j.psychres.2016.09.023>
- Huttenlocher, P. R. (1979). Synaptic density in human frontal cortex - developmental changes and effects of aging. *Brain Research*, *163*, 195–205. [http://dx.doi.org/10.1016/0006-8993\(79\)90349-4](http://dx.doi.org/10.1016/0006-8993(79)90349-4)
- Iscan, Z., Jin, T. B., Kendrick, A., Szeglin, B., Lu, H., Trivedi, M., . . . DeLorenzo, C. (2015). Test-retest reliability of freesurfer measurements within and between sites: Effects of visual approval process. *Human Brain Mapping*, *36*, 3472–3485. <http://dx.doi.org/10.1002/hbm.22856>
- Jaffee, S. R., McFarquhar, T., Stevens, S., Ouellet-Morin, I., Melhuish, E., & Belsky, J. (2015). Interactive effects of early and recent exposure to stressful contexts on cortisol reactivity in middle childhood. *Journal of Child Psychology and Psychiatry*, *56*, 138–146. <http://dx.doi.org/10.1111/jcpp.12287>
- Jalbrzikowski, M., Larsen, B., Hallquist, M. N., Foran, W., Calabro, F., & Luna, B. (2017). Development of white matter microstructure and intrinsic functional connectivity between the amygdala and ventromedial prefrontal cortex: Associations with anxiety and depression. *Biological Psychiatry*, *82*, 511–521. <http://dx.doi.org/10.1016/j.biopsych.2017.01.008>
- James, J., Ellis, B. J., Schlomer, G. L., & Garber, J. (2012). Sex-specific pathways to early puberty, sexual debut, and sexual risk taking: Tests of an integrated evolutionary–developmental model. *Developmental Psychology*, *48*, 687–702. <http://dx.doi.org/10.1037/a0026427>
- James-Todd, T., Tehranifar, P., Rich-Edwards, J., Titievsky, L., & Terry, M. B. (2010). The impact of socioeconomic status across early life on age at menarche among a racially diverse population of girls. *Annals of Epidemiology*, *20*, 836–842. <http://dx.doi.org/10.1016/j.annepidem.2010.08.006>
- Jednoróg, K., Altarelli, I., Monzalvo, K., Fluss, J., Dubois, J., Billard, C., . . . Ramus, F. (2012). The influence of socioeconomic status on children's brain structure. *PLoS ONE*, *7*(8), e42486. <http://dx.doi.org/10.1371/journal.pone.0042486>
- Johnson, D. E., Tang, A., Almas, A. N., Degnan, K. A., McLaughlin, K. A., Nelson, C. A., . . . Drury, S. S. (2018). Caregiving disruptions affect growth and pubertal development in early adolescence in institutionalized and fostered Romanian children: A randomized clinical trial. *Journal of Pediatrics*, *203*, 345–353.e3. <http://dx.doi.org/10.1016/j.jpeds.2018.07.027>
- Joshi, A. A., Leporé, N., Joshi, S. H., Lee, A. D., Barysheva, M., Stein, J. L., . . . Thompson, P. M. (2011). The contribution of genes to cortical thickness and volume. *NeuroReport*, *22*, 101–105. <http://dx.doi.org/10.1097/WNR.0b013e3283424c84>
- Jovanovic, T., Vance, L. A., Cross, D., Knight, A. K., Kilaru, V., Michopoulos, V., . . . Smith, A. K. (2017). Exposure to violence accelerates epigenetic aging in children. *Scientific Reports*, *7*, 1–7. <http://dx.doi.org/10.1038/s41598-017-09235-9>
- Karama, S., Ad-Dab'bagh, Y., Haier, R. J., Deary, I. J., Lyttelton, O. C., Lepage, C., & Evans, A. C. (2009). Erratum to “Positive association between cognitive ability and cortical thickness in a representative U.S. sample of healthy 6 to 18 year-olds.” *Intelligence*, *37*, 432–442. <http://dx.doi.org/10.1016/j.intell.2009.03.010>
- Karama, S., Colom, R., Johnson, W., Deary, I. J., Haier, R., Waber, D. P., . . . Evans, A. C. (2011). Cortical thickness correlates of specific cognitive performance accounted for by the general factor of intelligence in healthy children aged 6 to 18. *NeuroImage*, *55*, 1443–1453. <http://dx.doi.org/10.1016/j.neuroimage.2011.01.016>
- Keding, T. J., & Herringa, R. J. (2016). Paradoxical prefrontal-amygdala recruitment to angry and happy expressions in pediatric posttraumatic stress disorder. *Neuropsychopharmacology*, *41*, 2903–2912. <http://dx.doi.org/10.1038/npp.2016.104>
- Kelly, P. A., Viding, E., Wallace, G. L., Schaer, M., De Brito, S. A., Robustelli, B., & McCrory, E. J. (2013). Cortical thickness, surface area, and gyrification abnormalities in children exposed to maltreatment: Neural markers of vulnerability? *Biological Psychiatry*, *74*, 845–852. <http://dx.doi.org/10.1016/j.biopsych.2013.06.020>
- Kelly, Y., Zilanawala, A., Sacker, A., Hiatt, R., & Viner, R. (2017). Early puberty in 11-year-old girls: Millennium Cohort Study findings. *Archives of Disease in Childhood*, *102*, 232–237. <http://dx.doi.org/10.1136/archdischild-2016-310475>
- Kessler, R. C., McLaughlin, K. A., Green, J. G., Gruber, M. J., Sampson, N. A., Zaslavsky, A. M., . . . Williams, D. R. (2010). Childhood adversities and adult psychopathology in the WHO World Mental Health Surveys. *The British Journal of Psychiatry*, *197*, 378–385. <http://dx.doi.org/10.1192/bjp.bp.110.080499>
- Kim, S., Sandler, D. P., Carswell, G., Weinberg, C. R., & Taylor, J. A. (2011). Reliability and short-term intra-individual variability of telomere length measurement using monochrome multiplexing quantitative PCR. *PLoS ONE*, *6*, e25774. <http://dx.doi.org/10.1371/journal.pone.0025774>
- King, L. S., Colich, N. L., LeMoult, J., Humphreys, K. L., Ordaz, S. J., Price, A. N., & Gotlib, I. H. (2017). The impact of the severity of early

- life stress on diurnal cortisol: The role of puberty. *Psychoneuroendocrinology*, *77*, 68–74. <http://dx.doi.org/10.1016/j.psyneuen.2016.11.024>
- Konstantopoulos, S. (2011). Fixed effects and variance components estimation in three-level meta-analysis. *Research Synthesis Methods*, *2*, 61–76. <http://dx.doi.org/10.1002/jrsm.35>
- Kujawa, A., Wu, M., Klumpp, H., Pine, D. S., Swain, J. E., Fitzgerald, K. D., . . . Phan, K. L. (2016). Altered development of amygdala-anterior cingulate cortex connectivity in anxious youth and young adults. *Biological Psychiatry: Cognitive Neuroscience and Neuroimaging*, *1*, 345–352. <http://dx.doi.org/10.1016/j.bpsc.2016.01.006>
- Lakshman, R., Forouhi, N. G., Sharp, S. J., Luben, R., Bingham, S. A., Khaw, K. T., . . . Ong, K. K. (2009). Early age at menarche associated with cardiovascular disease and mortality. *The Journal of Clinical Endocrinology and Metabolism*, *94*, 4953–4960. <http://dx.doi.org/10.1210/jc.2009-1789>
- Lambert, H. K., King, K. M., Monahan, K. C., & McLaughlin, K. A. (2017). Differential associations of threat and deprivation with emotion regulation and cognitive control in adolescence. *Development and Psychopathology*, *29*, 929–940. <http://dx.doi.org/10.1017/S0954579416000584>
- Lang, J., McKie, J., Smith, H., McLaughlin, A., Gillberg, C., Shiels, P. G., & Minnis, H. (2019). Adverse childhood experiences, epigenetics and telomere length variation in childhood and beyond: A systematic review of the literature. *European Child & Adolescent Psychiatry*. Advance online publication. <http://dx.doi.org/10.1007/s00787-019-01329-1>
- Lawson, G. M., Duda, J. T., Avants, B. B., Wu, J., & Farah, M. J. (2013). Associations between children's socioeconomic status and prefrontal cortical thickness. *Developmental Science*, *16*, 641–652. <http://dx.doi.org/10.1111/desc.12096>
- Lenroot, R. K. R., Gogtay, N., Greenstein, D. K., Wells, E. M., Wallace, G. L., Clasen, L. S., . . . Giedd, J. N. (2007). Sexual dimorphism of brain developmental trajectories during childhood and adolescence. *NeuroImage*, *36*, 1065–1073. <http://dx.doi.org/10.1016/j.neuroimage.2007.03.053>
- Leonard, J. A., Romeo, R. R., Park, A. T., Takada, M. E., Robinson, S. T., Grotzinger, H., . . . Mackey, A. P. (2019). Associations between cortical thickness and reasoning differ by socioeconomic status in development. *Developmental Cognitive Neuroscience*, *36*, 1–9. <http://dx.doi.org/10.1016/j.dcn.2019.100641>
- LeWinn, K. Z., Sheridan, M. A., Keyes, K. M., Hamilton, A., & McLaughlin, K. A. (2017). Sample composition alters associations between age and brain structure. *Nature Communications*, *8*, 1–14. <http://dx.doi.org/10.1038/s41467-017-00908-7>
- Lewis, C. R., & Olive, M. F. (2014). Early-life stress interactions with the epigenome: Potential mechanisms driving vulnerability toward psychiatric illness. *Behavioural Pharmacology*, *25*, 341–351. <http://dx.doi.org/10.1097/fbp.0000000000000057>
- Li, X., Wang, J., Zhou, J., Huang, P., & Li, J. (2017). The association between post-traumatic stress disorder and shorter telomere length: A systematic review and meta-analysis. *Journal of Affective Disorders*, *218*, 322–326. <http://dx.doi.org/10.1016/j.jad.2017.03.048>
- Lim, L., Hart, H., Mehta, M., Worker, A., Simmons, A., Mirza, K., & Rubia, K. (2018). Grey matter volume and thickness abnormalities in young people with a history of childhood abuse. *Psychological Medicine*, *48*, 1034–1046. <http://dx.doi.org/10.1017/S0033291717002392>
- Lindqvist, D., Epel, E. S., Mellon, S. H., Penninx, B. W., Révész, D., Verhoeven, J. E., . . . Wolkowitz, O. M. (2015). Psychiatric disorders and leukocyte telomere length: Underlying mechanisms linking mental illness with cellular aging. *Neuroscience and Biobehavioral Reviews*, *55*, 333–364. <http://dx.doi.org/10.1016/j.neubiorev.2015.05.007>
- Lundblad, M. W., & Jacobsen, B. K. (2017). The reproducibility of self-reported age at menarche: The Tromsø Study. *BMC Women's Health*, *17*, 62. <http://dx.doi.org/10.1186/s12905-017-0420-0>
- Lynne-Landsman, S. D., Graber, J. A., & Andrews, J. A. (2010). Do trajectories of household risk in childhood moderate pubertal timing effects on substance initiation in middle school? *Developmental Psychology*, *46*, 853–868. <http://dx.doi.org/10.1037/a0019667>
- Mackey, A. P., Finn, A. S., Leonard, J. A., Jacoby-Senghor, D. S., West, M. R., Gabrieli, C. F. O., & Gabrieli, J. D. E. (2015). Neuroanatomical correlates of the income-achievement gap. *Psychological Science*, *26*, 925–933. <http://dx.doi.org/10.1177/0956797615572233>
- Malouff, J. M., & Schutte, N. S. (2017). A meta-analysis of the relationship between anxiety and telomere length. *Anxiety, Stress, and Coping*, *30*, 264–272. <http://dx.doi.org/10.1080/10615806.2016.1261286>
- Marioni, R. E., Shah, S., McRae, A. F., Chen, B. H., Colicino, E., Harris, S. E., . . . Deary, I. J. (2015). DNA methylation age of blood predicts all-cause mortality in later life. *Genome Biology*, *16*, 1–12. <http://dx.doi.org/10.1186/s13059-015-0584-6>
- Marioni, R. E., Shah, S., McRae, A. F., Ritchie, S. J., Muniz-Terrera, G., Harris, S. E., . . . Deary, I. J. (2015). The epigenetic clock is correlated with physical and cognitive fitness in the Lothian Birth Cohort 1936. *International Journal of Epidemiology*, *44*, 1388–1396. <http://dx.doi.org/10.1093/ije/dyu277>
- Marshall, W. A., & Tanner, J. M. (1970). Variations in the pattern of pubertal changes in boys. *Archives of Disease in Childhood*, *45*, 13–23. <http://dx.doi.org/10.1136/adc.45.239.13>
- Martin-Ruiz, C. M., Baird, D., Roger, L., Boukamp, P., Kronic, D., Cawthon, R., . . . von Zglinicki, T. (2015). Reproducibility of telomere length assessment: An international collaborative study. *International Journal of Epidemiology*, *44*, 1673–1683. <http://dx.doi.org/10.1093/ije/dyu191>
- Marusak, H. A., Martin, K. R., Etkin, A., & Thomason, M. E. (2015). Childhood trauma exposure disrupts the automatic regulation of emotional processing. *Neuropsychopharmacology*, *40*, 1250–1258. <http://dx.doi.org/10.1038/npp.2014.311>
- McCrary, E., De Brito, S. A. S. A., & Viding, E. (2011). The impact of childhood maltreatment: A review of neurobiological and genetic factors. *Frontiers in Psychiatry*, *2*, 1–14. <http://dx.doi.org/10.3389/fpsy.2011.00048>
- McDermott, C. L., Seidlitz, J., Nadig, A., Liu, S., Clasen, L. S., Blumenthal, J. D., . . . Raznahan, A. (2019). Longitudinally mapping childhood socioeconomic status associations with cortical and subcortical morphology. *The Journal of Neuroscience*, *39*, 1365–1373. <http://dx.doi.org/10.1523/JNEUROSCI.1808-18.2018>
- McEwen, B. S. (1998). Stress, adaptation, and disease. Allostasis and allostatic load. *Annals of the New York Academy of Sciences*, *840*, 33–44. <http://dx.doi.org/10.1111/j.1749-6632.1998.tb09546.x>
- McEwen, B. S., & Stellar, E. (1993). Stress and the individual. Mechanisms leading to disease. *Archives of Internal Medicine*, *153*, 2093–2101. <http://dx.doi.org/10.1001/archinte.1993.00410180039004>
- McLaughlin, K. A. (2016). Future directions in childhood adversity and youth psychopathology. *Journal of Clinical Child and Adolescent Psychology*, *45*, 361–382. <http://dx.doi.org/10.1080/15374416.2015.1110823>
- McLaughlin, K. A., Basu, A., Walsh, K., Slopen, N., Sumner, J. A., Koenen, K. C., & Keyes, K. M. (2016). Childhood exposure to violence and chronic physical conditions in a national sample of U.S. adolescents. *Psychosomatic Medicine*, *78*, 1072–1083. <http://dx.doi.org/10.1097/PSY.0000000000000366>
- McLaughlin, K. A., Costello, E. J., Leblanc, W., Sampson, N. A., & Kessler, R. C. (2012). Socioeconomic status and adolescent mental disorders. *American Journal of Public Health*, *102*, 1742–1750. <http://dx.doi.org/10.2105/AJPH.2011.300477>
- McLaughlin, K. A., Green, J. G., Gruber, M. J., Sampson, N. A., Zaslavsky, A. M., & Kessler, R. C. (2010). Childhood adversities and adult psychiatric disorders in the national comorbidity survey replication II: Associations with persistence of DSM-IV disorders. *Archives of*

- General Psychiatry*, 67, 124–132. <http://dx.doi.org/10.1001/archgenpsychiatry.2009.187>
- McLaughlin, K. A., Green, J. G., Gruber, M. J., Sampson, N. A., Zaslavsky, A. M., & Kessler, R. C. (2012). Childhood adversities and first onset of psychiatric disorders in a national sample of U.S. adolescents. *Archives of General Psychiatry*, 69, 1151–1160. <http://dx.doi.org/10.1001/archgenpsychiatry.2011.2277>
- McLaughlin, K. A., Peverill, M., Gold, A. L., Alves, S., & Sheridan, M. A. (2015). Child maltreatment and neural systems underlying emotion regulation. *Journal of the American Academy of Child & Adolescent Psychiatry*, 54, 753–762. <http://dx.doi.org/10.1016/j.jaac.2015.06.010>
- McLaughlin, K. A., & Sheridan, M. A. (2016). Beyond cumulative risk: A dimensional approach to childhood adversity. *Current Directions in Psychological Science*, 25, 239–245.
- McLaughlin, K. A., Sheridan, M. A., Gold, A. L., Duys, A., Lambert, H. K., Peverill, M., . . . Pine, D. S. (2016). Maltreatment exposure, brain structure, and fear conditioning in children and adolescents. *Neuropsychopharmacology*, 41, 1956–1964. <http://dx.doi.org/10.1038/npp.2015.365>
- McLaughlin, K. A., Sheridan, M. A., & Lambert, H. K. (2014). Childhood adversity and neural development: Deprivation and threat as distinct dimensions of early experience. *Neuroscience and Biobehavioral Reviews*, 47, 578–591. <http://dx.doi.org/10.1016/j.neubiorev.2014.10.012>
- McLaughlin, K. A., Sheridan, M. A., & Nelson, C. A. (2017). Neglect as a violation of species-expectant experience: Neurodevelopmental consequences. *Biological Psychiatry*, 82, 462–471. <http://dx.doi.org/10.1016/j.biopsych.2017.02.1096>
- McLaughlin, K. A., Sheridan, M. A., Winter, W., Fox, N. A., Zeanah, C. H., & Nelson, C. A. (2014). Widespread reductions in cortical thickness following severe early-life deprivation: A neurodevelopmental pathway to attention-deficit/hyperactivity disorder. *Biological Psychiatry*, 76, 629–638. <http://dx.doi.org/10.1016/j.biopsych.2013.08.016>
- Mendle, J., Harden, K. P., Brooks-Gunn, J., & Graber, J. A. (2010). Development's tortoise and hare: Pubertal timing, pubertal tempo, and depressive symptoms in boys and girls. *Developmental Psychology*, 46, 1341–1353. <http://dx.doi.org/10.1037/a0020205>
- Mendle, J., Leve, L. D., Van Ryzin, M., & Natsuaki, M. N. (2014). Linking childhood maltreatment with girls' internalizing symptoms: Early puberty as a tipping point. *Journal of Research on Adolescence*, 24, 689–702. <http://dx.doi.org/10.1111/jora.12075>
- Mendle, J., Leve, L. D., Van Ryzin, M., Natsuaki, M. N., & Ge, X. (2011). Associations between early life stress, child maltreatment, and pubertal development among girls in foster care. *Journal of Research on Adolescence*, 21, 871–880. <http://dx.doi.org/10.1111/j.1532-7795.2011.00746.x>
- Mendle, J., Moore, S. R., Briley, D. A., & Harden, K. P. (2016). Puberty, socioeconomic status, and depression in girls. *Clinical Psychological Science*, 4, 3–16. <http://dx.doi.org/10.1177/2167702614563598>
- Mendle, J., Ryan, R. M., & McKone, K. M. (2016). Early childhood maltreatment and pubertal development: Replication in a population-based sample. *Journal of Research on Adolescence*, 26, 595–602. <http://dx.doi.org/10.1111/jora.12201>
- Mendle, J., Turkheimer, E., D'Onofrio, B. M., Lynch, S. K., Emery, R. E., Slutske, W. S., & Martin, N. G. (2006). Family structure and age at menarche: A children-of-twins approach. *Developmental Psychology*, 42, 533–542. <http://dx.doi.org/10.1037/0012-1649.42.3.533>
- Mensah, F. K., Bayer, J. K., Wake, M., Carlin, J. B., Allen, N. B., & Patton, G. C. (2013). Early puberty and childhood social and behavioral adjustment. *The Journal of Adolescent Health*, 53, 118–124. <http://dx.doi.org/10.1016/j.jadohealth.2012.12.018>
- Milad, M. R., & Quirk, G. J. (2012). Fear extinction as a model for translational neuroscience: Ten years of progress. *Annual Review of Psychology*, 63, 129–151. <http://dx.doi.org/10.1146/annurev.psych.121208.131631>
- Milicer, H. (1968). Age at menarche of girls in Wrocław, Poland, in 1966. *Human Biology*, 40, 249–259.
- Mills, K. L., Goddings, A.-L., Herting, M. M., Meuwese, R., Blakemore, S.-J., Crone, E. A., . . . Tammes, C. K. (2016). Structural brain development between childhood and adulthood: Convergence across four longitudinal samples. *NeuroImage*, 141, 273–281. <http://dx.doi.org/10.1016/j.neuroimage.2016.07.044>
- Mitchell, C., Hobcraft, J., McLanahan, S. S., Siegel, S. R., Berg, A., Brooks-Gunn, J., . . . Notterman, D. (2014). Social disadvantage, genetic sensitivity, and children's telomere length. *Proceedings of the National Academy of Sciences of the United States of America*, 111, 5944–5949. <http://dx.doi.org/10.1073/pnas.1404293111>
- Moher, D., Liberati, A., Tetzlaff, J., & Altman, D. G. (2009). Preferred reporting items for systematic reviews and meta-analyses: The PRISMA statement. *Journal of Clinical Epidemiology*, 62, 1006–1012. <http://dx.doi.org/10.1016/j.jclinepi.2009.06.005>
- Monteilh, C., Kieszak, S., Flanders, W. D., Maisonet, M., Rubin, C., Holmes, A. K., . . . Marcus, M. (2011). Timing of maturation and predictors of Tanner stage transitions in boys enrolled in a contemporary British cohort. *Paediatric and Perinatal Epidemiology*, 25, 75–87. <http://dx.doi.org/10.1111/j.1365-3016.2010.01168.x>
- Natsuaki, M. N., Leve, L. D., & Mendle, J. (2011). Going through the rites of passage: Timing and transition of menarche, childhood sexual abuse, and anxiety symptoms in girls. *Journal of Youth and Adolescence*, 40, 1357–1370. <http://dx.doi.org/10.1007/s10964-010-9622-6>
- Natu, V. S., Gomez, J., Barnett, M., Jeska, B., Kirilina, E., Jaeger, C., . . . Grill-Spector, K. (2019). Apparent thinning of human visual cortex during childhood is associated with myelination. *Proceedings of the National Academy of Sciences of the United States of America*, 116, 20750–20759. <http://dx.doi.org/10.1073/pnas.1904931116>
- Natu, V. S., Gomez, J., Barnett, M., Jeska, B., Zhen, Z., Kirilina, E., . . . Grill-Spector, K. (2018). Gray matter thinning in ventral temporal cortex from childhood to adulthood is associated with increased myelination. *Journal of Vision*, 18(10), 542. <http://dx.doi.org/10.1167/18.10.542>
- Needham, B. L., Fernandez, J. R., Lin, J., Epel, E. S., & Blackburn, E. H. (2012). Socioeconomic status and cell aging in children. *Social Science & Medicine*, 74, 1948–1951. <http://dx.doi.org/10.1016/j.socscimed.2012.02.019>
- Needham, B. L., Mezuk, B., Bareis, N., Lin, J., Blackburn, E. H., & Epel, E. S. (2015). Depression, anxiety and telomere length in young adults: Evidence from the National Health and Nutrition Examination Survey. *Molecular Psychiatry*, 20, 520–528. <http://dx.doi.org/10.1038/mp.2014.89>
- Needham, B. L., Rehkopf, D., Adler, N., Gregorich, S., Lin, J., Blackburn, E. H., & Epel, E. S. (2015). Leukocyte telomere length and mortality in the National Health and Nutrition Examination Survey, 1999–2002. *Epidemiology*, 26, 528–535. <http://dx.doi.org/10.1097/EDE.0000000000000299>
- Negriff, S., Blankson, A. N., & Trickett, P. K. (2015). Pubertal timing and tempo: Associations with childhood maltreatment. *Journal of Research on Adolescence*, 25, 201–213. <http://dx.doi.org/10.1111/jora.12128>
- Negriff, S., Saxbe, D. E., & Trickett, P. K. (2015). Childhood maltreatment, pubertal development, HPA axis functioning, and psychosocial outcomes: An integrative biopsychosocial model. *Developmental Psychobiology*, 57, 984–993. <http://dx.doi.org/10.1002/dev.21340>
- Negriff, S., & Susman, E. J. (2011). Pubertal timing, depression, and externalizing problems: A framework, review, and examination of gender differences. *Journal of Research on Adolescence*, 21, 717–746. <http://dx.doi.org/10.1111/j.1532-7795.2010.00708.x>
- Negriff, S., & Trickett, P. K. (2012). Peer substance use as a mediator between early pubertal timing and adolescent substance use: Longitudinal associations and moderating effect of maltreatment. *Drug and Alcohol Dependence*, 126, 95–101. <http://dx.doi.org/10.1016/j.drugalcdep.2012.04.018>

- Nettle, D., Frankenhuys, W. E., & Rickard, I. J. (2013). The evolution of predictive adaptive responses in human life history. *Proceedings of the Royal Society of London Series B-Biological Sciences*, *280*, 1–9. <http://dx.doi.org/10.1098/rspb.2013.1343>
- Noble, K. G., Houston, S. M., Brito, N. H., Bartsch, H., Kan, E., Kuperman, J. M., . . . Sowell, E. R. (2015). Family income, parental education and brain structure in children and adolescents. *Nature Neuroscience*, *18*, 773–778. <http://dx.doi.org/10.1038/nn.3983>
- Noble, K. G., McCandliss, B. D., & Farah, M. J. (2007). Socioeconomic gradients predict individual differences in neurocognitive abilities. *Developmental Science*, *10*, 464–480. <http://dx.doi.org/10.1111/j.1467-7687.2007.00600.x>
- Noll, J. G., Trickett, P. K., Long, J. D., Negriff, S., Susman, E. J., Shalev, I., . . . Putnam, F. W. (2017). Childhood sexual abuse and early timing of puberty. *The Journal of Adolescent Health*, *60*, 65–71. <http://dx.doi.org/10.1016/j.jadohealth.2016.09.008>
- Norman, R. E., Byambaa, M., De, R., Butchart, A., Scott, J., & Vos, T. (2012). The long-term health consequences of child physical abuse, emotional abuse, and neglect: A systematic review and meta-analysis. *PLoS Medicine*, *9*, e1001349. <http://dx.doi.org/10.1371/journal.pmed.1001349>
- Parent, A.-S., Teilmann, G., Juul, A., Skakkebaek, N. E., Toppari, J., & Bourguignon, J.-P. (2003). The timing of normal puberty and the age limits of sexual precocity: Variations around the world, secular trends, and changes after migration. *Endocrine Reviews*, *24*, 668–693. <http://dx.doi.org/10.1210/er.2002-0019>
- Perna, L., Zhang, Y., Mons, U., Holleczeck, B., Saum, K.-U., & Brenner, H. (2016). Epigenetic age acceleration predicts cancer, cardiovascular, and all-cause mortality in a German case cohort. *Clinical Epigenetics*, *8*, 1–7. <http://dx.doi.org/10.1186/s13148-016-0228-z>
- Petanjek, Z., Judaš, M., Šimic, G., Rašin, M. R., Uylings, H. B. M., Rakic, P., & Kostović, I. (2011). Extraordinary neoteny of synaptic spines in the human prefrontal cortex. *Proceedings of the National Academy of Sciences of the United States of America*, *108*, 13281–13286. <http://dx.doi.org/10.1073/pnas.1105108108>
- Petersen, A. C., Crockett, L., Richards, M., & Boxer, A. (1988). A self-report measure of pubertal status: Reliability, validity, and initial norms. *Journal of Youth and Adolescence*, *17*, 117–133. <http://dx.doi.org/10.1007/BF01537962>
- Peeverill, M., Sheridan, M. A., Busso, D. S., & McLaughlin, K. A. (2019). Atypical prefrontal-amygdala circuitry following childhood exposure to abuse: Links with adolescent psychopathology. *Child Maltreatment*, *24*, 411–423. <http://dx.doi.org/10.1177/1077559519852676>
- Phelps, E. A., & LeDoux, J. E. (2005). Contributions of the amygdala to emotion processing: From animal models to human behavior. *Neuron*, *48*, 175–187. <http://dx.doi.org/10.1016/j.neuron.2005.09.025>
- Piccolo, L. R., Merz, E. C., He, X., Sowell, E. R., & Noble, K. G. (2016). Age-related differences in cortical thickness vary by socioeconomic status. *PLoS ONE*, *11*(9), e0162511. <http://dx.doi.org/10.1371/journal.pone.0162511>
- Platt, J. M., Colich, N. L., McLaughlin, K. A., Gary, D., & Keyes, K. M. (2017). Transdiagnostic psychiatric disorder risk associated with early age of menarche: A latent modeling approach. *Comprehensive Psychiatry*, *79*, 70–79. <http://dx.doi.org/10.1016/j.comppsy.2017.06.010>
- Prebeg, Z., & Bralic, I. (2000). Changes in menarcheal age in girls exposed to war conditions. *American Journal of Human Biology*, *12*, 503–508. [http://dx.doi.org/10.1002/1520-6300\(200007/08\)12:4<503::AID-AJHB10>3.0.CO;2-H](http://dx.doi.org/10.1002/1520-6300(200007/08)12:4<503::AID-AJHB10>3.0.CO;2-H)
- Price, L. H., Kao, H.-T., Burgers, D. E., Carpenter, L. L., & Tyrka, A. R. (2013). Telomeres and early-life stress: An overview. *Biological Psychiatry*, *73*, 15–23. <http://dx.doi.org/10.1016/j.biopsych.2012.06.025>
- Puhlmann, L. M. C., Valk, S. L., Engert, V., Bernhardt, B. C., Lin, J., & Epel, E. S. (2019). Association of short-term change in leukocyte telomere length with cortical thickness and outcomes of mental training among healthy adults a randomized clinical trial. *JAMA Network Open*, *2*, 1–16.
- Rakic, P., Bourgeois, J. P., Eckenhoff, M. F., Zecevic, N., & Goldman-Rakic, P. S. (1986). Concurrent overproduction of synapses in diverse regions of the primate cerebral cortex. *Science*, *232*, 232–235. <http://dx.doi.org/10.1126/science.3952506>
- Reagan, P. B., Salsberry, P. J., Fang, M. Z., Gardner, W. P., & Pajer, K. (2012). African-American/white differences in the age of menarche: Accounting for the difference. *Social Science & Medicine*, *75*, 1263–1270. <http://dx.doi.org/10.1016/j.socscimed.2012.05.018>
- Rehkopf, D. H., Needham, B. L., Lin, J., Blackburn, E. H., Zota, A. R., Wojcicki, J. M., & Epel, E. S. (2016). Leukocyte telomere length in relation to 17 biomarkers of cardiovascular disease risk: A cross-sectional study of U.S. adults. *PLoS Medicine*, *13*, e1002188. <http://dx.doi.org/10.1371/journal.pmed.1002188>
- Reid, B. M., Miller, B. S., Dorn, L. D., Desjardins, C., Donzella, B., & Gunnar, M. (2017). Early growth faltering in post-institutionalized youth and later anthropometric and pubertal development. *Pediatric Research*, *82*, 278–284. <http://dx.doi.org/10.1038/pr.2017.35>
- Rickard, I. J., Frankenhuys, W. E., & Nettle, D. (2014). Why are childhood family factors associated with timing of maturation? A role for internal prediction. *Perspectives on Psychological Science*, *9*, 3–15. <http://dx.doi.org/10.1177/1745691613513467>
- Ridout, K. K., Parade, S. H., Kao, H. T., Magnan, S., Seifer, R., Porton, B., . . . Tyrka, A. R. (2019). Childhood maltreatment, behavioral adjustment, and molecular markers of cellular aging in preschool-aged children: A cohort study. *Psychoneuroendocrinology*, *107*, 261–269. <http://dx.doi.org/10.1016/j.psyneuen.2019.05.015>
- Ridout, K. K., Ridout, S. J., Price, L. H., Sen, S., & Tyrka, A. R. (2016). Depression and telomere length: A meta-analysis. *Journal of Affective Disorders*, *191*, 237–247. <http://dx.doi.org/10.1016/j.jad.2015.11.052>
- Rogol, A. D., Clark, P. A., & Roemmich, J. N. (2000). Growth and pubertal development in children and adolescents: Effects of diet and physical activity. *The American Journal of Clinical Nutrition*, *72*, 521S–528S. <http://dx.doi.org/10.1093/ajcn/72.2.521S>
- Rosen, M. L., Sheridan, M. A., Sambrook, K. A., Meltzoff, A. N., & McLaughlin, K. A. (2018). Socioeconomic disparities in academic achievement: A multi-modal investigation of neural mechanisms in children and adolescents. *NeuroImage*, *173*, 298–310. <http://dx.doi.org/10.1016/j.neuroimage.2018.02.043>
- Rowe, D. C. (2002). On genetic variation in menarche and age at first sexual intercourse. A critique of the Belsky-Draper hypothesis. *Evolution and Human Behavior*, *23*, 365–372. [http://dx.doi.org/10.1016/S1090-5138\(02\)00102-2](http://dx.doi.org/10.1016/S1090-5138(02)00102-2)
- Ryan, R. M., Mendle, J., & Markowitz, A. J. (2015). Early childhood maltreatment and girls' sexual behavior: The mediating role of pubertal timing. *The Journal of Adolescent Health*, *57*, 342–347. <http://dx.doi.org/10.1016/j.jadohealth.2015.06.005>
- Salces, I., Rebato, E. M., Susanne, C., San Martin, L., & Rosique, J. (2001). Familial resemblance for the age at menarche in Basque population. *Annals of Human Biology*, *28*, 143–156. <http://dx.doi.org/10.1080/03014460151056338>
- Sánchez-Garrido, M. A., Castellano, J. M., Ruiz-Pino, F., Garcia-Galiano, D., Manfredi-Lozano, M., Leon, S., . . . Tena-Sempere, M. (2013). Metabolic programming of puberty: Sexually dimorphic responses to early nutritional challenges. *Endocrinology*, *154*, 3387–3400. <http://dx.doi.org/10.1210/en.2012-2157>
- Saxbe, D. E., Negriff, S., Susman, E. J., & Trickett, P. K. (2015). Attenuated hypothalamic-pituitary-adrenal axis functioning predicts accelerated pubertal development in girls 1 year later. *Development and Psychopathology*, *27*, 819–828. <http://dx.doi.org/10.1017/S0954579414000790>
- Scheuer, S., Wiggert, N., Brückl, T. M., Awaloff, Y., Uhr, M., Lucae, S., . . . Wilhelm, F. H. (2018). Childhood abuse and depression in adult-

- hood: The mediating role of allostatic load. *Psychoneuroendocrinology*, 94, 134–142. <http://dx.doi.org/10.1016/j.psyneuen.2018.04.020>
- Schmitt, J. E., Lenroot, R. K., Wallace, G. L., Ordaz, S., Taylor, K. N., Kabani, N., . . . Giedd, J. N. (2008). Identification of genetically mediated cortical networks: A multivariate study of pediatric twins and siblings. *Cerebral Cortex*, 18, 1737–1747. <http://dx.doi.org/10.1093/cercor/bhm211>
- Scott, K. M., Von Korff, M., Angermeyer, M. C., Benjet, C., Bruffaerts, R., de Girolamo, G., . . . Kessler, R. C. (2011). Association of childhood adversities and early-onset mental disorders with adult-onset chronic physical conditions. *Archives of General Psychiatry*, 68, 838–844. <http://dx.doi.org/10.1001/archgenpsychiatry.2011.77>
- Shalev, I. (2012). Early life stress and telomere length: Investigating the connection and possible mechanisms: A critical survey of the evidence base, research methodology and basic biology. *BioEssays*, 34, 943–952. <http://dx.doi.org/10.1002/bies.201200084>
- Shalev, I., & Belsky, J. (2016). Early-life stress and reproductive cost: A two-hit developmental model of accelerated aging? *Medical Hypotheses*, 90, 41–47. <http://dx.doi.org/10.1016/j.mehy.2016.03.002>
- Shalev, I., Moffitt, T. E., Sugden, K., Williams, B., Houts, R. M., Danese, A., . . . Caspi, A. (2013). Exposure to violence during childhood is associated with telomere erosion from 5 to 10 years of age: A longitudinal study. *Molecular Psychiatry*, 18, 576–581. <http://dx.doi.org/10.1038/mp.2012.32>
- Sheridan, M. A., & McLaughlin, K. A. (2014). Dimensions of early experience and neural development: Deprivation and threat. *Trends in Cognitive Sciences*, 18, 580–585. <http://dx.doi.org/10.1016/j.tics.2014.09.001>
- Sheridan, M. A., Peverill, M., Finn, A. S., & McLaughlin, K. A. (2017). Dimensions of childhood adversity have distinct associations with neural systems underlying executive functioning. *Development and Psychopathology*, 29, 1777–1794. <http://dx.doi.org/10.1017/S0954579417001390>
- Shirtcliff, E. A., Dahl, R. E., & Pollak, S. D. (2009). Pubertal development: Correspondence between hormonal and physical development. *Child Development*, 80, 327–337. <http://dx.doi.org/10.1111/j.1467-8624.2009.01263.x>
- Silberman, D. M., Acosta, G. B., & Zorrilla Zubilete, M. A. (2016). Long-term effects of early life stress exposure: Role of epigenetic mechanisms. *Pharmacological Research*, 109, 64–73. <http://dx.doi.org/10.1016/j.phrs.2015.12.033>
- Silvers, J. A., Lumian, D. S., Gabard-Durnam, L., Gee, D. G., Goff, B., Fareri, D. S., . . . Tottenham, N. (2016). Previous institutionalization is followed by broader amygdala–hippocampal–PFC network connectivity during aversive learning in human development. *The Journal of Neuroscience*, 36, 6420–6430. <http://dx.doi.org/10.1523/JNEUROSCI.0038-16.2016>
- Simonsohn, U., Nelson, L. D., & Simmons, J. P. (2014). p-curve and effect size: Correcting for publication bias using only significant results. *Perspectives on Psychological Science*, 9, 666–681. <http://dx.doi.org/10.1177/1745691614553988>
- Slopen, N., Tang, A., Nelson, C. A., Zeanah, C. H., McDade, T. W., McLaughlin, K. A., & Fox, N. A. (2019). The consequences of foster care versus institutional care in early childhood on adolescent cardiometabolic and immune markers. *Psychosomatic Medicine*, 81, 449–457. <http://dx.doi.org/10.1097/PSY.0000000000000696>
- Sonuga-Barke, E. J., Schlotz, W., & Rutter, M. (2010). Physical growth and maturation following early severe institutional deprivation: Do they mediate specific psychopathological effects? *Monographs of the Society for Research in Child Development*, 75, 143–166. <http://dx.doi.org/10.1111/j.1540-5834.2010.00554.x>
- Sowell, E. R., Thompson, P. M., Leonard, C. M., Welcome, S. E., Kan, E., & Toga, A. W. (2004). Longitudinal mapping of cortical thickness and brain growth in normal children. *The Journal of Neuroscience*, 24, 8223–8231. <http://dx.doi.org/10.1523/JNEUROSCI.1798-04.2004>
- Spreng, R. N., & Grady, C. L. (2010). Patterns of brain activity supporting autobiographical memory, prospection, and theory of mind, and their relationship to the default mode network. *Journal of Cognitive Neuroscience*, 22, 1112–1123. <http://dx.doi.org/10.1162/jocn.2009.21282>
- Suarez, A., Lahti, J., Czamara, D., Lahti-Pulkkinen, M., Girchenko, P., Andersson, S., . . . Raikkonen, K. (2018). The epigenetic clock and pubertal, neuroendocrine, psychiatric, and cognitive outcomes in adolescents. *Clinical Epigenetics*, 10, 1–12. <http://dx.doi.org/10.1186/s13148-018-0528-6>
- Sumner, J. A., Colich, N. L., Uddin, M., Armstrong, D., & McLaughlin, K. A. (2019). Early experiences of threat, but not deprivation, are associated with accelerated biological aging in children and adolescents. *Biological Psychiatry*, 85, 268–278. <http://dx.doi.org/10.1016/j.biopsych.2018.09.008>
- Sun, Y., Mensah, F. K., Azzopardi, P., Patton, G. C., & Wake, M. (2017). Childhood social disadvantage and pubertal timing: A national birth cohort From Australia. *Pediatrics*, 139, 1–10. <http://dx.doi.org/10.1542/peds.2016-4099>
- Sung, S., Simpson, J. A., Griskevicius, V., Kuo, S. I.-C., Schlomer, G. L., & Belsky, J. (2016). Secure infant-mother attachment buffers the effect of early-life stress on age of menarche. *Psychological Science*, 27, 667–674. <http://dx.doi.org/10.1177/09567976166631958>
- Teilmann, G., Petersen, J. H., Gormsen, M., Damgaard, K., Skakkebaek, N. E., & Jensen, T. K. (2009). Early puberty in internationally adopted girls: Hormonal and clinical markers of puberty in 276 girls examined biannually over two years. *Hormone Research*, 72, 236–246. <http://dx.doi.org/10.1159/000236085>
- Theall, K. P., Brett, Z. H., Shirtcliff, E. A., Dunn, E. C., & Drury, S. S. (2013). Neighborhood disorder and telomeres: Connecting children's exposure to community level stress and cellular response. *Social Science & Medicine*, 85, 50–58. <http://dx.doi.org/10.1016/j.socscimed.2013.02.030>
- Tither, J. M., & Ellis, B. J. (2008). Impact of fathers on daughters' age at menarche: A genetically and environmentally controlled sibling study. *Developmental Psychology*, 44, 1409–1420. <http://dx.doi.org/10.1037/a0013065>
- Towne, B., Czerwinski, S. A., Demerath, E. W., Blangero, J., Roche, A. F., & Siervogel, R. M. (2005). Heritability of age at menarche in girls from the Fels Longitudinal Study. *American Journal of Physical Anthropology*, 128, 210–219. <http://dx.doi.org/10.1002/ajpa.20106>
- Trickett, P. K., Noll, J. G., & Putnam, F. W. (2011). The impact of sexual abuse on female development: Lessons from a multigenerational, longitudinal research study. *Development and Psychopathology*, 23, 453–476. <http://dx.doi.org/10.1017/S0954579411000174>
- Trickett, P. K., & Putnam, F. W. (1993). Impact of child sexual abuse on females: Toward a developmental, psychobiological integration. *Psychological Science*, 4, 81–87. <http://dx.doi.org/10.1111/j.1467-9280.1993.tb00465.x>
- Turner, P. K., Runtz, M. G., & Galambos, N. L. (1999). Sexual abuse, pubertal timing, and subjective age in adolescent girls: A research note. *Journal of Reproductive and Infant Psychology*, 17, 111–118. <http://dx.doi.org/10.1080/02646839908409091>
- Tyrka, A. R., Parade, S. H., Price, L. H., Kao, H. T., Porton, B., Philip, N. S., . . . Carpenter, L. L. (2016). Alterations of mitochondrial DNA copy number and telomere length with early adversity and psychopathology. *Biological Psychiatry*, 79, 78–86. <http://dx.doi.org/10.1016/j.biopsych.2014.12.025>
- Tyrka, A. R., Price, L. H., Gelemtier, J., Schepker, C., Anderson, G. M., & Carpenter, L. L. (2009). Interaction of childhood maltreatment with the corticotropin-releasing hormone receptor gene: Effects on hypothalamic-pituitary-adrenal axis reactivity. *Biological Psychiatry*, 66, 681–685. <http://dx.doi.org/10.1016/j.biopsych.2009.05.012>
- Ullsperger, J. M., & Nikolas, M. A. (2017). A meta-analytic review of the association between pubertal timing and psychopathology in adoles-

- cence: Are there sex differences in risk? *Psychological Bulletin*, *143*, 903–938. <http://dx.doi.org/10.1037/bul0000106>
- van Noord, P. A. H., & Kaaks, R. (1991). The effect of wartime conditions and the 1944–45 ‘Dutch famine’ on recalled menarcheal age in participants of the DOM breast cancer screening project. *Annals of Human Biology*, *18*, 57–70. <http://dx.doi.org/10.1080/03014469100001402>
- van Soelen, I. L. C., Brouwer, R. M., van Baal, G. C. M., Schnack, H. G., Peper, J. S., Collins, D. L., . . . Hulshoff Pol, H. E. (2012). Genetic influences on thinning of the cerebral cortex during development. *NeuroImage*, *59*, 3871–3880. <http://dx.doi.org/10.1016/j.neuroimage.2011.11.044>
- Velie, E. M., Nechuta, S., & Osuch, J. R. (2006). Lifetime reproductive and anthropometric risk factors for breast cancer in postmenopausal women. *Breast Disease*, *24*, 17–35. <http://dx.doi.org/10.3233/BD-2006-24103>
- Viechtbauer, W. (2010). Conducting meta-analyses in R with the metafor package. *Journal of Statistical Software*, *36*, 1–48. <http://dx.doi.org/10.18637/jss.v036.i03>
- Vijayakumar, N., Allen, N. B., Youssef, G., Dennison, M., Yücel, M., Simmons, J. G., & Whittle, S. (2016). Brain development during adolescence: A mixed-longitudinal investigation of cortical thickness, surface area, and volume. *Human Brain Mapping*, *37*, 2027–2038. <http://dx.doi.org/10.1002/hbm.23154>
- Vinkers, C. H., Kalafateli, A. L., Rutten, B. P., Kas, M. J., Kaminsky, Z., Turner, J. D., & Boks, M. P. (2015). Traumatic stress and human DNA methylation: A critical review. *Epigenomics*, *7*, 593–608. <http://dx.doi.org/10.2217/epi.15.11>
- Walhovd, K. B., Fjell, A. M., Giedd, J., Dale, A. M., & Brown, T. T. (2017). Through thick and thin: A need to reconcile contradictory results on trajectories in human cortical development. *Cerebral Cortex*, *27*, 1472–1481. <http://dx.doi.org/10.1093/cercor/bhv301>
- Webster, G. D., Graber, J. A., Gesselman, A. N., Crosier, B. S., & Schember, T. O. (2014). A life history theory of father absence and menarche: A meta-analysis. *Evolutionary Psychology*, *12*, 273–294. <http://dx.doi.org/10.1177/147470491401200202>
- Widom, C. S., Horan, J., & Brzustowicz, L. (2015). Childhood maltreatment predicts allostatic load in adulthood. *Child Abuse & Neglect*, *47*, 59–69. <http://dx.doi.org/10.1016/j.chiabu.2015.01.016>
- Widom, C. S., Raphael, K. G., & DuMont, K. A. (2004). The case for prospective longitudinal studies in child maltreatment research: Commentary on Dube, Williamson, Thompson, Felitti, and Anda (2004). *Child Abuse & Neglect*, *28*, 715–722. <http://dx.doi.org/10.1016/j.chiabu.2004.03.009>
- Wierenga, L. M., Langen, M., Oranje, B., & Durston, S. (2014). Unique developmental trajectories of cortical thickness and surface area. *NeuroImage*, *87*, 120–126. <http://dx.doi.org/10.1016/j.neuroimage.2013.11.010>
- Windham, G. C., Zhang, L., Longnecker, M. P., & Klebanoff, M. (2008). Maternal smoking, demographic and lifestyle factors in relation to daughter’s age at menarche. *Paediatric and Perinatal Epidemiology*, *22*, 551–561. <http://dx.doi.org/10.1111/j.1365-3016.2008.00948.x>
- Winkler, A. M., Kochunov, P., Blangero, J., Almasy, L., Zilles, K., Fox, P. T., . . . Glahn, D. C. (2010). Cortical thickness or grey matter volume? The importance of selecting the phenotype for imaging genetics studies. *NeuroImage*, *53*, 1135–1146. <http://dx.doi.org/10.1016/j.neuroimage.2009.12.028>
- Wolf, E. J., Maniates, H., Nugent, N., Maihofer, A. X., Armstrong, D., Ratanatharathorn, A., . . . Logue, M. W. (2018). Traumatic stress and accelerated DNA methylation age: A meta-analysis. *Psychoneuroendocrinology*, *92*, 123–134. <http://dx.doi.org/10.1016/j.psyneuen.2017.12.007>
- Wu, M., Kujawa, A., Lu, L. H., Fitzgerald, D. A., Klumpp, H., Fitzgerald, K. D., . . . Phan, K. L. (2016). Age-related changes in amygdala-frontal connectivity during emotional face processing from childhood into young adulthood. *Human Brain Mapping*, *37*, 1684–1695. <http://dx.doi.org/10.1002/hbm.23129>
- Xu, Y., Norton, S., & Rahman, Q. (2018). Early life conditions, reproductive and sexuality-related life history outcomes among human males: A systematic review and meta-analysis. *Evolution and Human Behavior*, *39*, 40–51. <http://dx.doi.org/10.1016/j.evolhumbehav.2017.08.005>
- Yang, Y., Joshi, A. A., Joshi, S. H., Baker, L. A., Narr, K. L., Raine, A., . . . Damasio, H. (2012). Genetic and environmental influences on cortical thickness among 14-year-old twins. *NeuroReport*, *23*, 702–706. <http://dx.doi.org/10.1097/WNR.0b013e328355a62a>
- Yarrow, M. R., Campbell, J. D., & Burton, R. V. (1970). Recollections of childhood. A study of the retrospective method. *Monographs of the Society for Research in Child Development*, *35*, 1–83. <http://dx.doi.org/10.2307/1165649>
- Zhang, Y., Padmanabhan, A., Gross, J. J., & Menon, V. (2019). Development of human emotion circuits investigated using a big-data analytic approach: Stability, reliability, and robustness. *The Journal of Neuroscience*, *39*, 7155–7172. <http://dx.doi.org/10.1523/JNEUROSCI.0220-19.2019>
- Zhu, X., Han, W., Xue, W., Zou, Y., Xie, C., Du, J., & Jin, G. (2016). The association between telomere length and cancer risk in population studies. *Scientific Reports*, *6*, 1–10. <http://dx.doi.org/10.1038/srep22243>

Received May 17, 2019

Revision received February 26, 2020

Accepted May 5, 2020 ■